


Anti-GDF15 antibody ab106006

★★★★★ [1 Abreviews](#) [2 References](#) [1 图像](#)

概述

产品名称	Anti-GDF15抗体
描述	兔多克隆抗体to GDF15
宿主	Rabbit
经测试应用	适用于: WB
种属反应性	与反应: Human 预测可用于: Rat, Chimpanzee, Macaque monkey 
免疫原	Synthetic peptide corresponding to a region near the carboxy terminal end of Human GDF15 protein. A residue of cysteine was added to facilitate coupling to KLH.
阳性对照	GDF15 purified from CHO cells
常规说明	Dilute only prior to immediate use. Expiration date is one (1) year from date of opening product. The Life Science industry has been in the grips of a reproducibility crisis for a number of years. Abcam is leading the way in addressing this with our range of recombinant monoclonal antibodies and knockout edited cell lines for gold-standard validation. Please check that this product meets your needs before purchasing. If you have any questions, special requirements or concerns, please send us an inquiry and/or contact our Support team ahead of purchase. Recommended alternatives for this product can be found below, along with publications, customer reviews and Q&As

性能

形式	Liquid
存放说明	Shipped at 4°C. Store at +4°C short term (1-2 weeks). Upon delivery aliquot. Store at -20°C or -80°C. Avoid freeze / thaw cycle.
存储溶液	Preservative: 0.01% Sodium azide Constituents: 0.88% Sodium chloride, 0.42% Potassium phosphate
纯度	Immunogen affinity purified
纯化说明	ab106006 was affinity purified from monospecific antiserum.
克隆	多克隆
同种型	IgG

应用

The Abpromise guarantee

Abpromise™承诺保证使用ab106006于以下的经测试应用

“应用说明”部分 下显示的仅为推荐的起始稀释度;实际最佳的稀释度/浓度应由使用者检定。

应用	Ab评论	说明
WB	★★★★★ (1)	1/2000 - 1/10000. Predicted molecular weight: 34 kDa.

靶标

组织特异性

Highly expressed in placenta, with lower levels in prostate and colon and some expression in kidney.

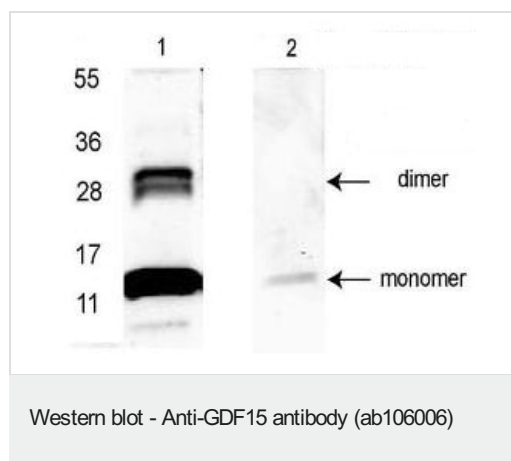
序列相似性

Belongs to the TGF-beta family.

细胞定位

Secreted.

图片



All lanes : Anti-GDF15 antibody (ab106006) at 1/2000 dilution

Lane 1 : GDF15 purified from CHO cells

Lane 2 : GDF15 purified from CHO cells, with immunizing peptide

Performed under reducing conditions.

Predicted band size: 34 kDa

A 14 kDa band corresponding to a GDF15 monomer and a 28 kDa band corresponding to dimerized GDF15 are indicated by arrowheads.

Lane 1 shows GDF15 detection, whereas lane 2 shows reactivity is blocked when ab106006 is pre-incubated with the immunizing peptide prior to Western blotting.

Please note: All products are "FOR RESEARCH USE ONLY. NOT FOR USE IN DIAGNOSTIC PROCEDURES"

Our Abpromise to you: Quality guaranteed and expert technical support

- Replacement or refund for products not performing as stated on the datasheet
- Valid for 12 months from date of delivery

- Response to your inquiry within 24 hours
- We provide support in Chinese, English, French, German, Japanese and Spanish
- Extensive multi-media technical resources to help you
- We investigate all quality concerns to ensure our products perform to the highest standards

If the product does not perform as described on this datasheet, we will offer a refund or replacement. For full details of the Abpromise, please visit <https://www.abcam.cn/abpromise> or contact our technical team.

Terms and conditions

- Guarantee only valid for products bought direct from Abcam or one of our authorized distributors