


Anti-GDF15 antibody [23G10.F8] ab105732

1 图像

概述

产品名称	Anti-GDF15抗体[23G10.F8]
描述	小鼠单克隆抗体[23G10.F8] to GDF15
宿主	Mouse
特异性	ab105732 specifically reacts with the amino terminal end of GDF15 protein from tissues. Multimeric forms of GDF15 may be detected.
经测试应用	适用于: WB
种属反应性	与反应: Human 预测可用于: Chimpanzee, Macaque monkey 
免疫原	Synthetic peptide corresponding to a region near the amino terminal end of Human GDF15. A residue of cysteine was added to facilitate coupling to KLH.
阳性对照	Yeast cell lysate expressing GDF15 H variant with SUMO expression tag; yeast cell lysate expressing GDF15 D variant with SUMO expression tag; yeast cell lysate expressing GDF15 H variant; yeast cell lysate expressing GDF15 D variant
常规说明	<p>The Life Science industry has been in the grips of a reproducibility crisis for a number of years. Abcam is leading the way in addressing this with our range of recombinant monoclonal antibodies and knockout edited cell lines for gold-standard validation. Please check that this product meets your needs before purchasing.</p> <p>If you have any questions, special requirements or concerns, please send us an inquiry and/or contact our Support team ahead of purchase. Recommended alternatives for this product can be found below, along with publications, customer reviews and Q&As</p>

性能

形式	Liquid
存放说明	Shipped at 4°C. Store at +4°C short term (1-2 weeks). Store at -20°C long term. Avoid freeze / thaw cycle. Diluted stock solutions should be used immediately and not be frozen. Store undiluted.
存储溶液	Preservative: 0.01% Sodium azide Constituents: 0.42% Potassium phosphate, 0.88% Sodium chloride
纯度	Protein A purified
纯化说明	Purified from concentrated tissue culture supernatant.

克隆	单克隆
克隆编号	23G10.F8
同种型	IgG1

应用

The Abpromise guarantee **Abpromise™**承诺保证使用ab105732于以下的经测试应用

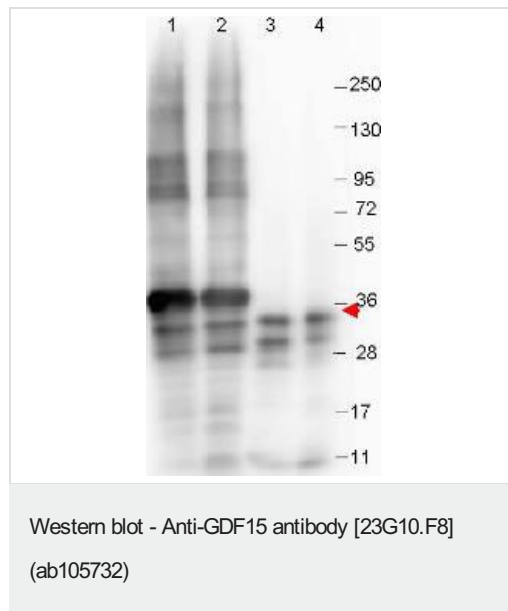
“应用说明”部分下显示的仅为推荐的起始稀释度;实际最佳的稀释度/浓度应由使用者检定。

应用	Ab评论	说明
WB		1/1000. Predicted molecular weight: 34 kDa.

靶标

组织特异性	Highly expressed in placenta, with lower levels in prostate and colon and some expression in kidney.
序列相似性	Belongs to the TGF-beta family.
细胞定位	Secreted.

图片



All lanes : Anti-GDF15 antibody [23G10.F8] (ab105732) at 1/1000 dilution

Lane 1 : Yeast cell lysate expressing GDF15 H variant with SUMO expression tag at 36 kDa

Lane 2 : Yeast cell lysate expressing GDF15 D variant with SUMO expression tag at 36 kDa

Lane 3 : Yeast cell lysate expressing GDF15 H variant

Lane 4 : Yeast cell lysate expressing GDF15 D variant

Predicted band size: 34 kDa

Please note: All products are "FOR RESEARCH USE ONLY. NOT FOR USE IN DIAGNOSTIC PROCEDURES"

Our Abpromise to you: Quality guaranteed and expert technical support

- Replacement or refund for products not performing as stated on the datasheet

- Valid for 12 months from date of delivery
- Response to your inquiry within 24 hours

- We provide support in Chinese, English, French, German, Japanese and Spanish
- Extensive multi-media technical resources to help you
- We investigate all quality concerns to ensure our products perform to the highest standards

If the product does not perform as described on this datasheet, we will offer a refund or replacement. For full details of the Abpromise, please visit <https://www.abcam.cn/abpromise> or contact our technical team.

Terms and conditions

- Guarantee only valid for products bought direct from Abcam or one of our authorized distributors