


Anti-GCN1 antibody ab86139

★★★★★ 2 Abreviews 5 References 2 图像

概述	
产品名称	Anti-GCN1抗体
描述	兔多克隆抗体to GCN1
宿主	Rabbit
经测试应用	适用于: WB, IP
种属反应性	与反应: Human 预测可用于: Rabbit, Horse, Cow, Pig, Chimpanzee, Gorilla, Bat, Elephant 
免疫原	Synthetic peptide corresponding to Human GCN1. Database link: Q92616
常规说明	<p>The Life Science industry has been in the grips of a reproducibility crisis for a number of years. Abcam is leading the way in addressing this with our range of recombinant monoclonal antibodies and knockout edited cell lines for gold-standard validation. Please check that this product meets your needs before purchasing.</p> <p>If you have any questions, special requirements or concerns, please send us an inquiry and/or contact our Support team ahead of purchase. Recommended alternatives for this product can be found below, along with publications, customer reviews and Q&As</p>
性能	
形式	Liquid
存放说明	Shipped at 4°C. Upon delivery aliquot and store at -20°C. Avoid freeze / thaw cycles.
存储溶液	pH: 6.8 Preservative: 0.09% Sodium azide Constituents: 0.1% BSA, Tris buffered saline
纯度	Immunogen affinity purified
克隆	多克隆
同种型	IgG
应用	

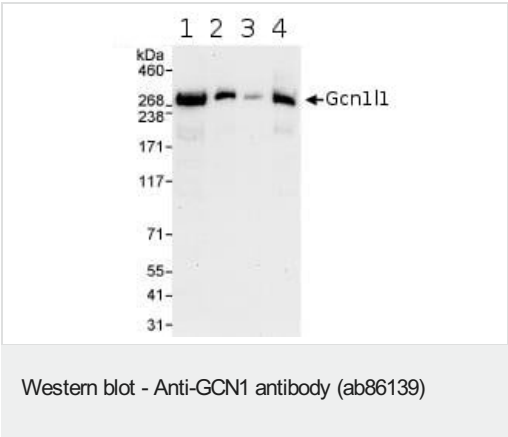
“应用说明”部分 下显示的仅为推荐的起始稀释度;实际最佳的稀释度/浓度应由使用者检定。

应用	Ab评论	说明
WB	★★★★★ (1)	1/2000 - 1/10000. Predicted molecular weight: 293 kDa.
IP		Use at 2-5 µg/mg of lysate.

靶标

功能	Acts as a positive activator of the EIF2AK4/GCN2 protein kinase activity in response to amino acid starvation. Forms a complex with EIF2AK4/GCN2 on translating ribosomes; during this process, GCN1 seems to act as a chaperone to facilitate delivery of uncharged tRNAs that enter the A site of ribosomes to the tRNA-binding domain of EIF2AK4/GCN2, and hence stimulating EIF2AK4/GCN2 kinase activity. Participates in the repression of global protein synthesis and in gene-specific mRNA translation activation, such as the transcriptional activator ATF4, by promoting the EIF2AK4/GCN2-mediated phosphorylation of eukaryotic translation initiation factor 2 (eIF-2-alpha/EIF2S1) on 'Ser-52', and hence allowing ATF4-mediated reprogramming of amino acid biosynthetic gene expression to alleviate nutrient depletion.
组织特异性	Ubiquitously expressed (PubMed:9039502). Expressed in skeletal muscles, ovary and testis (PubMed:9234705).
序列相似性	Belongs to the GCN1 family. Contains 47 HEAT repeats.
细胞定位	Cytoplasm. Associates with ribosomes in undifferentiated neuroblastoma cells and increases after neuronal differentiation.

图片



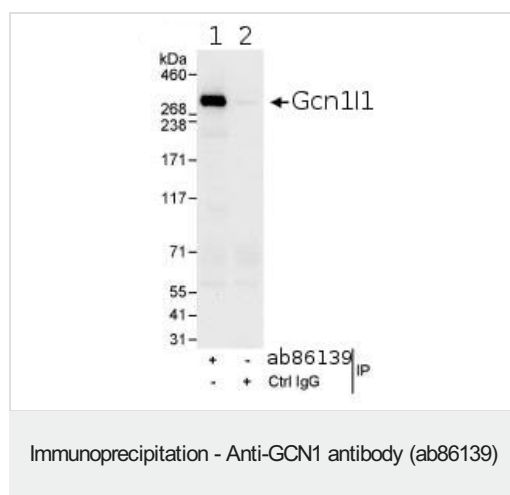
All lanes : Anti-GCN1 antibody (ab86139) at 0.04 µg/ml

- Lane 1 : HeLa whole cell lysate at 50 µg
- Lane 2 : HeLa whole cell lysate at 15 µg
- Lane 3 : HeLa whole cell lysate at 5 µg
- Lane 4 : 293T whole cell lysate at 50 µg

Developed using the ECL technique.

Predicted band size: 293 kDa
Observed band size: 293 kDa

Exposure time: 30 seconds



Detection of Human GCN1 by Immunoprecipitation, using ab86139 at 3µg/mg lysate. Image shows immunoprecipitated GCN1 detected with post IP WB, loading 20% of IP and using HeLa whole cell lysate at 1mg, with ab86139 at 1 µg/ml in lane 1 and control IgG in lane 2. Detection: Chemiluminescence with an exposure time of 30 seconds.

Please note: All products are "FOR RESEARCH USE ONLY. NOT FOR USE IN DIAGNOSTIC PROCEDURES"

Our Abpromise to you: Quality guaranteed and expert technical support

- Replacement or refund for products not performing as stated on the datasheet
- Valid for 12 months from date of delivery
- Response to your inquiry within 24 hours
- We provide support in Chinese, English, French, German, Japanese and Spanish
- Extensive multi-media technical resources to help you
- We investigate all quality concerns to ensure our products perform to the highest standards

If the product does not perform as described on this datasheet, we will offer a refund or replacement. For full details of the Abpromise, please visit <https://www.abcam.cn/abpromise> or contact our technical team.

Terms and conditions

- Guarantee only valid for products bought direct from Abcam or one of our authorized distributors