



Anti-GC-C antibody ab122404

★★★★★ [1 Abreviews](#) [2 图像](#)

概述

产品名称	Anti-GC-C抗体
描述	兔多克隆抗体to GC-C
宿主	Rabbit
经测试应用	适用于: IHC-P
种属反应性	与反应: Human
免疫原	<p>Recombinant fragment corresponding to Human GC-C aa 982-1067. Sequence:</p> <p>EVRGETYLKGRGNETTYWLTGMKDQKFNLPTPTVENQQLQ AEFSDMIA NSLQKRQAAGIRSQKPRRVASYKKGTLEYLQLNTTD</p> <p>Database link: P25092</p> <p> Run BLAST with  Run BLAST with</p>
阳性对照	IHC-P: Human rectum and small intestine tissue.
常规说明	<p>The Life Science industry has been in the grips of a reproducibility crisis for a number of years. Abcam is leading the way in addressing this with our range of recombinant monoclonal antibodies and knockout edited cell lines for gold-standard validation. Please check that this product meets your needs before purchasing.</p> <p>If you have any questions, special requirements or concerns, please send us an inquiry and/or contact our Support team ahead of purchase. Recommended alternatives for this product can be found below, along with publications, customer reviews and Q&As</p>

性能

形式	Liquid
存放说明	Shipped at 4°C. Upon delivery aliquot and store at -20°C. Avoid freeze / thaw cycles.
存储溶液	<p>pH: 7.20 Preservative: 0.02% Sodium azide Constituents: 59% PBS, 40% Glycerol (glycerin, glycerine)</p>
纯度	Immunogen affinity purified
克隆	多克隆

同种型

lgG

应用

The Abpromise guarantee

Abpromise™承诺保证使用ab122404于以下的经测试应用

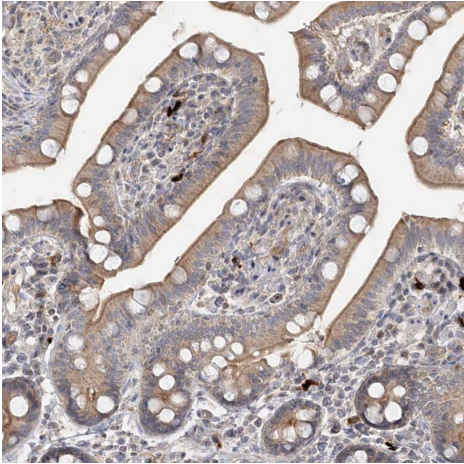
“应用说明”部分 下显示的仅为推荐的起始稀释度;实际最佳的稀释度/浓度应由使用者检定。

应用	Ab评论	说明
IHC-P		1/200 - 1/500. Perform heat mediated antigen retrieval with citrate buffer pH 6 before commencing with IHC staining protocol.

靶标

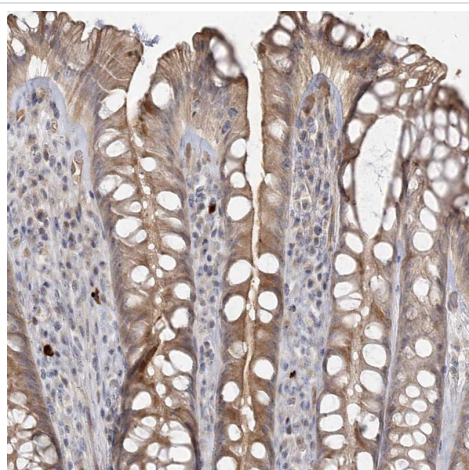
功能	Receptor for the E.coli heat-stable enterotoxin (E.coli enterotoxin markedly stimulates the accumulation of cGMP in mammalian cells expressing GC-C). Also activated by the endogenous peptide guanylin.
序列相似性	Belongs to the adenylyl cyclase class-4/guanylyl cyclase family. Contains 1 guanylate cyclase domain. Contains 1 protein kinase domain.
结构域	The protein kinase domain is predicted to be catalytically inactive.
细胞定位	Membrane.

图片



Immunohistochemistry (Formalin/PFA-fixed paraffin-embedded sections) - Anti-GC-C antibody (ab122404)

Immunohistochemical analysis of human small intestine tissue labeling GC-C with ab122404 at 1/500 dilution.



Immunohistochemical analysis of human rectum tissue labeling GC-C with ab122404 at 1/500 dilution.

Immunohistochemistry (Formalin/PFA-fixed paraffin-embedded sections) - Anti-GC-C antibody (ab122404)

Please note: All products are "FOR RESEARCH USE ONLY. NOT FOR USE IN DIAGNOSTIC PROCEDURES"

Our Abpromise to you: Quality guaranteed and expert technical support

- Replacement or refund for products not performing as stated on the datasheet
- Valid for 12 months from date of delivery
- Response to your inquiry within 24 hours
- We provide support in Chinese, English, French, German, Japanese and Spanish
- Extensive multi-media technical resources to help you
- We investigate all quality concerns to ensure our products perform to the highest standards

If the product does not perform as described on this datasheet, we will offer a refund or replacement. For full details of the Abpromise, please visit <https://www.abcam.cn/abpromise> or contact our technical team.

Terms and conditions

- Guarantee only valid for products bought direct from Abcam or one of our authorized distributors