




Anti-Gbx2 antibody ab109726

★☆☆☆☆ [1 Abreviews](#) [1 References](#) [3 图像](#)

概述

产品名称	Anti-Gbx2抗体
描述	山羊多克隆抗体to Gbx2
宿主	Goat
经测试应用	适用于: ELISA, WB, IHC-P
种属反应性	与反应: Human 预测可用于: Mouse, Cow, Dog, Pig 
免疫原	Synthetic peptide: C-QGKDESKVEDDPK , corresponding to internal sequence amino acids 181-193 of Human Gbx2.  Run BLAST with  Run BLAST with
阳性对照	Jurkat cell lysate, Human brain (cortex) and Human placenta tissues
常规说明	<p>The Life Science industry has been in the grips of a reproducibility crisis for a number of years. Abcam is leading the way in addressing this with our range of recombinant monoclonal antibodies and knockout edited cell lines for gold-standard validation. Please check that this product meets your needs before purchasing.</p> <p>If you have any questions, special requirements or concerns, please send us an inquiry and/or contact our Support team ahead of purchase. Recommended alternatives for this product can be found below, along with publications, customer reviews and Q&As</p>

性能

形式	Liquid
存放说明	Shipped at 4°C. Upon delivery aliquot and store at -20°C. Avoid freeze / thaw cycles.
存储溶液	pH: 7.30 Preservative: 0.02% Sodium azide Constituents: Tris buffered saline, 0.5% BSA
纯度	Immunogen affinity purified
克隆	多克隆
同种型	IgG

应用

The Abpromise guarantee **Abpromise™**承诺保证使用ab109726于以下的经测试应用

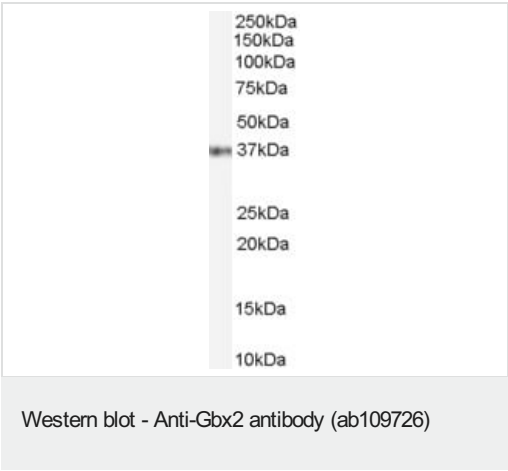
“应用说明”部分 下显示的仅为推荐的起始稀释度;实际最佳的稀释度/浓度应由使用者检定。

应用	Ab评论	说明
ELISA		Use at an assay dependent concentration.
WB		Use a concentration of 0.1 - 0.3 µg/ml. Predicted molecular weight: 37 kDa.
IHC-P		Use a concentration of 3.75 µg/ml.

靶标

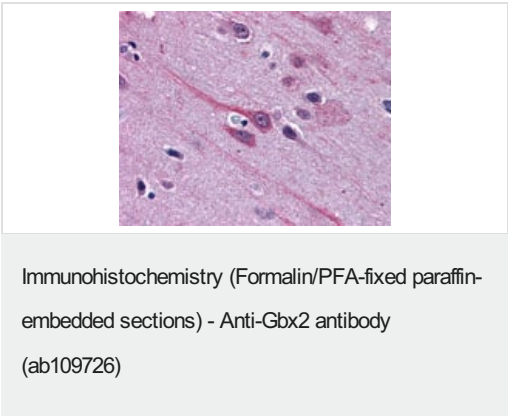
功能	May act as a transcription factor for cell pluripotency and differentiation in the embryo.
序列相似性	Contains 1 homeobox DNA-binding domain.
细胞定位	Nucleus.

图片

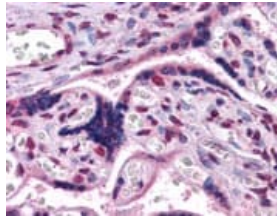


Anti-Gbx2 antibody (ab109726) at 0.1 µg/ml + Jurkat cell lysate (in RIPA buffer) at 35 µg

Predicted band size: 37 kDa



Human Brain, cortex: Formalin-Fixed, Paraffin-Embedded (FFPE) using ab109726 at a concentration of 3.75 µg/ml.



Human Placenta: Formalin-Fixed, Paraffin-Embedded (FFPE)
using ab109726 at a concentration of 3.75 µg/ml.

Immunohistochemistry (Formalin/PFA-fixed paraffin-
embedded sections) - Anti-Gbx2 antibody
(ab109726)

Please note: All products are "FOR RESEARCH USE ONLY. NOT FOR USE IN DIAGNOSTIC PROCEDURES"

Our Abpromise to you: Quality guaranteed and expert technical support

- Replacement or refund for products not performing as stated on the datasheet
- Valid for 12 months from date of delivery
- Response to your inquiry within 24 hours
- We provide support in Chinese, English, French, German, Japanese and Spanish
- Extensive multi-media technical resources to help you
- We investigate all quality concerns to ensure our products perform to the highest standards

If the product does not perform as described on this datasheet, we will offer a refund or replacement. For full details of the Abpromise, please visit <https://www.abcam.cn/abpromise> or contact our technical team.

Terms and conditions

- Guarantee only valid for products bought direct from Abcam or one of our authorized distributors