

# Anti-GATAD2B antibody ab76924

**2 References**   **3 图像**

### 概述

|       |                                                                                                                                                                                                                                                                                                                                                                                                                                                                                                                                                                                                                 |
|-------|-----------------------------------------------------------------------------------------------------------------------------------------------------------------------------------------------------------------------------------------------------------------------------------------------------------------------------------------------------------------------------------------------------------------------------------------------------------------------------------------------------------------------------------------------------------------------------------------------------------------|
| 产品名称  | Anti-GATAD2B抗体                                                                                                                                                                                                                                                                                                                                                                                                                                                                                                                                                                                                  |
| 描述    | 兔多克隆抗体to GATAD2B                                                                                                                                                                                                                                                                                                                                                                                                                                                                                                                                                                                                |
| 宿主    | Rabbit                                                                                                                                                                                                                                                                                                                                                                                                                                                                                                                                                                                                          |
| 经测试应用 | 适用于: WB, IP                                                                                                                                                                                                                                                                                                                                                                                                                                                                                                                                                                                                     |
| 种属反应性 | 与反应: Mouse, Human<br>预测可用于: Rat, Rabbit, Horse, Guinea pig, Cow, Dog, Pig, Chimpanzee, Rhesus monkey, Gorilla, Chinese hamster, Elephant                                                                                                                                                                                                                                                                                                                                                                                       |
| 免疫原   | Synthetic peptide corresponding to Human GATAD2B aa 1-50 (N terminal).<br>Database link: <a href="#">NP_065750.1</a>                                                                                                                                                                                                                                                                                                                                                                                                                                                                                            |
| 阳性对照  | WB: HeLa, 293T and CT26-WT whole cell lysates. IP: HeLa whole cell lysate.                                                                                                                                                                                                                                                                                                                                                                                                                                                                                                                                      |
| 常规说明  | <p>The Life Science industry has been in the grips of a reproducibility crisis for a number of years. Abcam is leading the way in addressing this with our range of recombinant monoclonal antibodies and knockout edited cell lines for gold-standard validation. Please check that this product meets your needs before purchasing.</p> <p>If you have any questions, special requirements or concerns, please send us an inquiry and/or contact our Support team ahead of purchase. Recommended alternatives for this product can be found below, along with publications, customer reviews and Q&amp;As</p> |

### 性能

|      |                                                                                             |
|------|---------------------------------------------------------------------------------------------|
| 形式   | Liquid                                                                                      |
| 存放说明 | Shipped at 4°C. Upon delivery aliquot and store at -20°C. Avoid freeze / thaw cycles.       |
| 存储溶液 | pH: 6.8<br>Preservative: 0.09% Sodium azide<br>Constituents: 0.1% BSA, Tris buffered saline |
| 纯度   | Immunogen affinity purified                                                                 |
| 克隆   | 多克隆                                                                                         |
| 同种型  | IgG                                                                                         |

### 应用

**The Abpromise guarantee**      **Abpromise™**承诺保证使用ab76924于以下的经测试应用

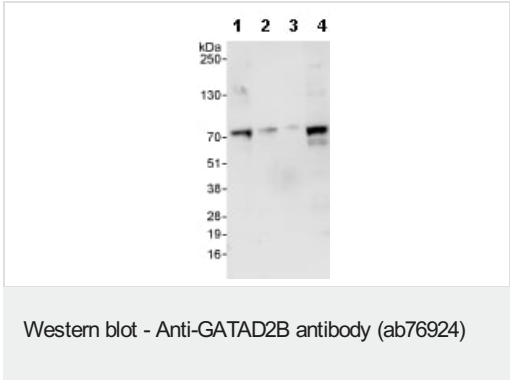
“应用说明”部分 下显示的仅为推荐的起始稀释度;实际最佳的稀释度/浓度应由使用者检定。

| 应用 | Ab评论 | 说明                                                    |
|----|------|-------------------------------------------------------|
| WB |      | 1/2000 - 1/10000. Predicted molecular weight: 66 kDa. |
| IP |      | Use at 2-5 µg/mg of lysate.                           |

靶标

|       |                                                                                                                                              |
|-------|----------------------------------------------------------------------------------------------------------------------------------------------|
| 功能    | Has transcriptional repressor activity. Targets MBD3 to discrete loci in the nucleus.                                                        |
| 组织特异性 | Ubiquitous.                                                                                                                                  |
| 序列相似性 | Contains 1 GATA-type zinc finger.                                                                                                            |
| 结构域   | CR1 is required for interaction with MBD3 and transcription repression.<br>CR2 is required for localization to discrete loci in the nucleus. |
| 细胞定位  | Nucleus. Nuclear, in discrete foci.                                                                                                          |

图片

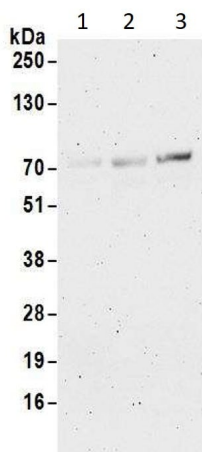


**All lanes :** Anti-GATAD2B antibody (ab76924) at 0.04 µg/ml

- Lane 1 :** HeLa whole cell lysate at 50 µg
- Lane 2 :** HeLa whole cell lysate at 15 µg
- Lane 3 :** HeLa whole cell lysate at 5 µg
- Lane 4 :** 293T whole cell lysate at 50 µg

**Predicted band size:** 66 kDa  
**Observed band size:** 71 kDa

**Exposure time:** 30 seconds



Western blot - Anti-GATAD2B antibody (ab76924)

**All lanes :** Anti-GATAD2B antibody (ab76924) at 1/2000 dilution

**Lane 1 :** NIH 3T3 (Mouse embryonic fibroblasts) whole cell lysate

**Lane 2 :** TCMK-1 (Transformed C3H Mouse Kidney-1) whole cell lysate

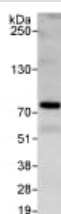
**Lane 3 :** CT26-WT (Mouse colon carcinoma cell - Wild Type) whole cell lysate

Lysates/proteins at 50 µg per lane.

**Predicted band size:** 66 kDa

**Observed band size:** 72 kDa

**Exposure time:** 3 minutes



Immunoprecipitation - Anti-GATAD2B antibody (ab76924)

Detection of GATAD2B by Western Blot of Immunoprecipitate.

ab76924 at 1µg/ml staining GATAD2B in HeLa whole cell lysate

immunoprecipitated using ab76924 at 3µg/mg lysate (1 mg/IP; 20% of IP loaded/lane).

Detection: Chemiluminescence with exposure time of 30 seconds.

**Please note:** All products are "FOR RESEARCH USE ONLY. NOT FOR USE IN DIAGNOSTIC PROCEDURES"

### Our Abpromise to you: Quality guaranteed and expert technical support

- Replacement or refund for products not performing as stated on the datasheet
- Valid for 12 months from date of delivery
- Response to your inquiry within 24 hours
- We provide support in Chinese, English, French, German, Japanese and Spanish

- Extensive multi-media technical resources to help you
- We investigate all quality concerns to ensure our products perform to the highest standards

If the product does not perform as described on this datasheet, we will offer a refund or replacement. For full details of the Abpromise, please visit <https://www.abcam.cn/abpromise> or contact our technical team.

#### **Terms and conditions**

---

- Guarantee only valid for products bought direct from Abcam or one of our authorized distributors