

### Anti-GATA1 antibody ab28839

★★★★★ [2 Abreviews](#) [11 References](#) [2 图像](#)

#### 概述

---

<b>产品名称</b>	Anti-GATA1抗体
<b>描述</b>	兔多克隆抗体to GATA1
<b>宿主</b>	Rabbit
<b>经测试应用</b>	<b>适用于:</b> WB, IHC-P
<b>种属反应性</b>	<b>与反应:</b> Human
<b>免疫原</b>	Synthetic non-phosphopeptide derived from human GATA1 around the phosphorylation site of Serine 142.
<b>常规说明</b>	<p>The Life Science industry has been in the grips of a reproducibility crisis for a number of years. Abcam is leading the way in addressing this with our range of recombinant monoclonal antibodies and knockout edited cell lines for gold-standard validation. Please check that this product meets your needs before purchasing.</p> <p>If you have any questions, special requirements or concerns, please send us an inquiry and/or contact our Support team ahead of purchase. Recommended alternatives for this product can be found below, along with publications, customer reviews and Q&amp;As</p>

#### 性能

---

<b>形式</b>	Liquid
<b>存放说明</b>	Shipped at 4°C. Store at +4°C short term (1-2 weeks). Upon delivery aliquot. Store at -20°C long term.
<b>存储溶液</b>	pH: 7.40 Preservative: 0.02% Sodium azide Constituents: PBS, 50% Glycerol, 0.87% Sodium chloride
<b>纯度</b>	Without Mg <sup>2+</sup> and Ca <sup>2+</sup> Immunogen affinity purified
<b>克隆</b>	多克隆
<b>同种型</b>	IgG

#### 应用

---

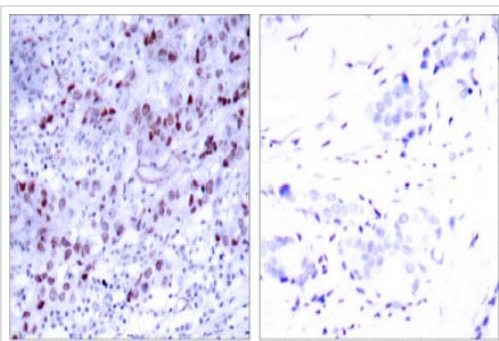
“应用说明”部分下显示的仅为推荐的起始稀释度;实际最佳的稀释度/浓度应由使用者检定。

应用	Ab评论	说明
WB	★★★★★ (2)	1/500 - 1/1000. Detects a band of approximately 43 kDa (predicted molecular weight: 43 kDa).
IHC-P		Use at an assay dependent concentration.

## 靶标

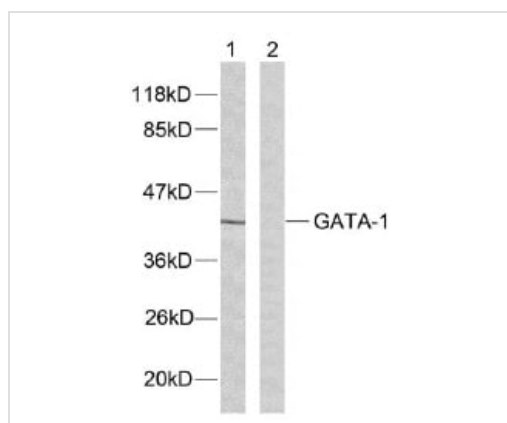
<b>功能</b>	Transcriptional activator which probably serves as a general switch factor for erythroid development. It binds to DNA sites with the consensus sequence [AT]GATA[AG] within regulatory regions of globin genes and of other genes expressed in erythroid cells.
<b>组织特异性</b>	Erythrocytes.
<b>疾病相关</b>	<p>Defects in GATA1 are the cause of X-linked dyserythropoietic anemia and thrombocytopenia (XDAT) [MIM:300367]. XDAT is a disorder characterized by erythrocytes with abnormal size and shape, and paucity of platelets in peripheral blood. The bone marrow contains abundant and abnormally small megakaryocytes.</p> <p>Defects in GATA1 are the cause of X-linked thrombocytopenia with beta-thalassemia (XLTT) [MIM:314050]; also known as thrombocytopenia, platelet dysfunction, hemolysis, and imbalanced globin synthesis. XLTT consists of an unusual form of thrombocytopenia with beta-thalassemia. Patients have splenomegaly and petechiae, moderate thrombocytopenia, prolonged bleeding time due to platelet dysfunction, reticulocytosis and unbalanced hemoglobin chain synthesis resembling that of beta-thalassemia minor.</p> <p>Defects in GATA1 are the cause of anemia without thrombocytopenia X-linked (XLAWT) [MIM:300835]. XLAWT is a form of anemia characterized by abnormal morphology of erythrocytes and granulocytes in peripheral blood, bone marrow dysplasia with hypocellularity of erythroid and granulocytic lineages, and normal or increased number of megakaryocytes. Neutropenia of a variable degree is present in affected individuals.</p>
<b>序列相似性</b>	Contains 2 GATA-type zinc fingers.
<b>结构域</b>	The two fingers are functionally distinct and cooperate to achieve specific, stable DNA binding. The first finger is necessary only for full specificity and stability of binding, whereas the second one is required for binding.
<b>翻译后修饰</b>	<p>Highly phosphorylated on serine residues. Phosphorylation on Ser-310 is enhanced on erythroid differentiation. Phosphorylation on Ser-142 promotes sumoylation on Lys-137.</p> <p>Sumoylation on Lys-137 is enhanced by phosphorylation on Ser-142 and by interaction with PIAS4. Sumoylation by SUMO1 has no effect on transcriptional activity.</p>
<b>细胞定位</b>	Nucleus.

## 图片



Immunohistochemistry (Formalin/PFA-fixed paraffin-embedded sections) - Anti-GATA1 antibody (ab28839)

Immunohistochemical analysis of paraffin-embedded breast carcinoma. Left: Using GATA-1(Ab-1) Antibody (ab28839); Right: The same antibody preincubated with synthesized peptide.



Western blot - Anti-GATA1 antibody (ab28839)

**All lanes :** Anti-GATA1 antibody (ab28839) (1/500-1/1000 dilution)

**All lanes :** extracts from K562 cells (5-30ug).

**Predicted band size:** 43 kDa

**Observed band size:** 43 kDa

Western blot analysis of extracts from K562 cells. Line1: Using GATA-1 antibody (ab28839); Line2: The same antibody preincubated with synthesized peptide.

**Please note:** All products are "FOR RESEARCH USE ONLY. NOT FOR USE IN DIAGNOSTIC PROCEDURES"

### Our Abpromise to you: Quality guaranteed and expert technical support

- Replacement or refund for products not performing as stated on the datasheet
- Valid for 12 months from date of delivery
- Response to your inquiry within 24 hours
- We provide support in Chinese, English, French, German, Japanese and Spanish
- Extensive multi-media technical resources to help you
- We investigate all quality concerns to ensure our products perform to the highest standards

If the product does not perform as described on this datasheet, we will offer a refund or replacement. For full details of the Abpromise, please visit <https://www.abcam.cn/abpromise> or contact our technical team.

## Terms and conditions

---

- Guarantee only valid for products bought direct from Abcam or one of our authorized distributors