

Anti-Gastrin antibody ab53085

[3 References](#) [1 图像](#)

概述

产品名称	Anti-Gastrin抗体
描述	兔多克隆抗体to Gastrin
宿主	Rabbit
特异性	ab53085 detects endogenous levels of total Gastrin protein. The immunogen for this antibody has high alignment to CKK. It is therefore predicted to detect CKK as well as Gastrin, though this has not been tested experimentally.
经测试应用	适用于: WB
种属反应性	与反应: Mouse
免疫原	Synthetic peptide derived from Human Gastrin
常规说明	<p>The Life Science industry has been in the grips of a reproducibility crisis for a number of years. Abcam is leading the way in addressing this with our range of recombinant monoclonal antibodies and knockout edited cell lines for gold-standard validation. Please check that this product meets your needs before purchasing.</p> <p>If you have any questions, special requirements or concerns, please send us an inquiry and/or contact our Support team ahead of purchase. Recommended alternatives for this product can be found below, along with publications, customer reviews and Q&As</p>

性能

形式	Liquid
存放说明	Shipped at 4°C. Store at -20°C. Stable for 12 months at -20°C.
存储溶液	pH: 7 Preservative: 0.02% Sodium azide Constituents: 50% Glycerol (glycerin, glycerine), 0.87% Sodium chloride, PBS
纯度	Without Mg+2 and Ca+2
克隆	Immunogen affinity purified
同种型	多克隆 IgG

应用

The Abpromise guarantee **Abpromise™**承诺保证使用ab53085于以下的经测试应用

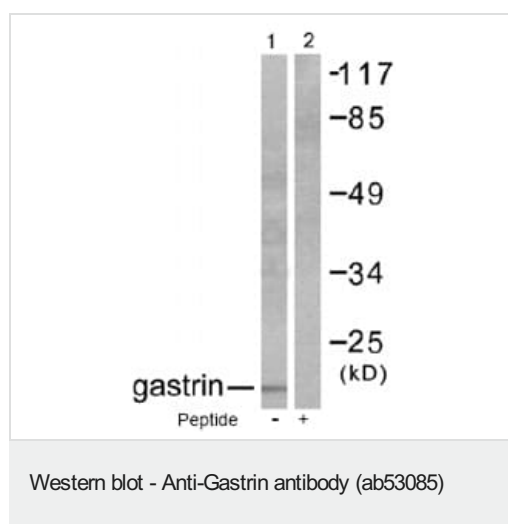
“应用说明”部分 下显示的仅为推荐的起始稀释度;实际最佳的稀释度/浓度应由使用者检定。

应用	Ab评论	说明
WB		1/500 - 1/1000. Detects a band of approximately 11 kDa (predicted molecular weight: 11 kDa).

靶标

功能	Gastrin stimulates the stomach mucosa to produce and secrete hydrochloric acid and the pancreas to secrete its digestive enzymes. It also stimulates smooth muscle contraction and increases blood circulation and water secretion in the stomach and intestine.
序列相似性	Belongs to the gastrin/cholecystokinin family.
翻译后修饰	Two different processing pathways probably exist in antral G-cells. In the dominant pathway progastrin is cleaved at three sites resulting in two major bioactive gastrins, gastrin-34 and gastrin-17. In the putative alternative pathway, progastrin may be processed only at the most C-terminal dibasic site resulting in the synthesis of gastrin-71. Sulfation enhances proteolytic processing, and blocks peptide degradation. Levels of sulfation differ between proteolytically-cleaved gastrins. Thus, gastrin-6 is almost 73% sulfated, whereas the larger gastrins are less than 50% sulfated. Sulfation levels are also tissue-specific.
细胞定位	Secreted.

图片



All lanes : Anti-Gastrin antibody (ab53085) at 1/500 dilution

Lane 1 : NIH/3T3 cell extract

Lane 2 : NIH/3T3 cell extract with peptide

Predicted band size: 11 kDa

Observed band size: 11 kDa

Please note: All products are "FOR RESEARCH USE ONLY. NOT FOR USE IN DIAGNOSTIC PROCEDURES"

Our Abpromise to you: Quality guaranteed and expert technical support

- Replacement or refund for products not performing as stated on the datasheet

- Valid for 12 months from date of delivery
- Response to your inquiry within 24 hours

- We provide support in Chinese, English, French, German, Japanese and Spanish
- Extensive multi-media technical resources to help you
- We investigate all quality concerns to ensure our products perform to the highest standards

If the product does not perform as described on this datasheet, we will offer a refund or replacement. For full details of the Abpromise, please visit <https://www.abcam.cn/abpromise> or contact our technical team.

Terms and conditions

- Guarantee only valid for products bought direct from Abcam or one of our authorized distributors