


Anti-GAS2 antibody [EPR1742(2)] ab109762

重组 RabMAb

4 References 3 图像

概述

| | |
|-------|---|
| 产品名称 | Anti-GAS2抗体[EPR1742(2)] |
| 描述 | 兔单克隆抗体[EPR1742(2)] to GAS2 |
| 宿主 | Rabbit |
| 经测试应用 | 适用于: WB, IHC-P 不适用于: Flow Cyt or ICC/IF |
| 种属反应性 | 与反应: Human 预测可用于: Mouse  |
| 免疫原 | Synthetic peptide. This information is proprietary to Abcam and/or its suppliers. |
| 阳性对照 | HepG2, fetal liver, fetal kidney, and Jurkat lysates, Human stomach tissue |
| 常规说明 | <p>This product is a recombinant monoclonal antibody, which offers several advantages including:</p> <ul style="list-style-type: none">- High batch-to-batch consistency and reproducibility- Improved sensitivity and specificity- Long-term security of supply- Animal-free production <p>For more information see here.</p> <p>Our RabMAb[®] technology is a patented hybridoma-based technology for making rabbit monoclonal antibodies. For details on our patents, please refer to RabMAb[®] patents.</p> <p>Rat: We have preliminary internal testing data to indicate this antibody may not react with this species. Please contact us for more information.</p> |

性能

| | |
|------|--|
| 形式 | Liquid |
| 存放说明 | Shipped at 4°C. Store at -20°C. Stable for 12 months at -20°C. |
| 存储溶液 | pH: 7.20 Preservative: 0.05% Sodium azide Constituents: 0.1% BSA, 40% Glycerol (glycerin, glycerine), 9.85% Tris glycine, 50% Tissue culture supernatant |
| 纯度 | Protein A purified |

| | |
|------|------------|
| 克隆 | 单克隆 |
| 克隆编号 | EPR1742(2) |
| 同种型 | IgG |

应用

The Abpromise guarantee **Abpromise™承诺保证使用ab109762于以下的经测试应用**

“应用说明”部分下显示的仅为推荐的起始稀释度;实际最佳的稀释度/浓度应由使用者检定。

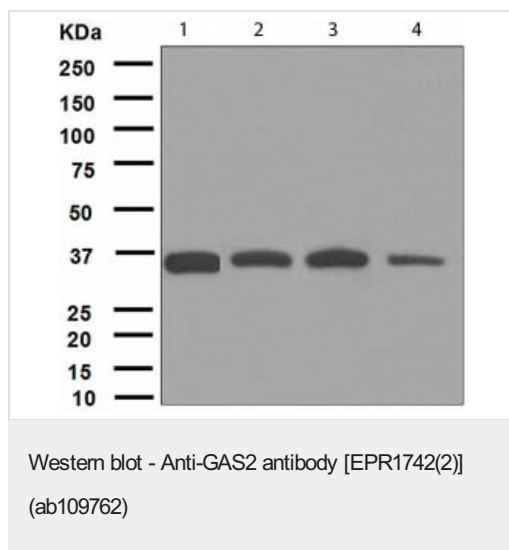
| 应用 | Ab评论 | 说明 |
|--------------|------|--|
| WB | | 1/1000 - 1/10000. Detects a band of approximately 35 kDa (predicted molecular weight: 35 kDa). |
| IHC-P | | 1/50 - 1/100. Perform heat mediated antigen retrieval with citrate buffer pH 6 before commencing with IHC staining protocol. |

应用说明 Is unsuitable for Flow Cyt or ICC/IF.

靶标

| | |
|-------|--|
| 功能 | May play a role in apoptosis by acting as a cell death substrate for caspases. Is cleaved during apoptosis and the cleaved form induces dramatic rearrangements of the actin cytoskeleton and potent changes in the shape of the affected cells. May be involved in the membrane ruffling process. |
| 组织特异性 | Ubiquitously expressed with highest levels in liver, lung, and kidney. Not found in spleen. |
| 序列相似性 | Belongs to the GAS2 family. Contains 1 CH (calponin-homology) domain. Contains 1 GAR domain. |
| 发展阶段 | Specifically expressed at growth arrest. |
| 翻译后修饰 | Cleaved, during apoptosis, on a specific aspartic residue by caspases. Phosphorylated on serine residues during the G0-G1 transition phase. |
| 细胞定位 | Cytoplasm > cytoskeleton. Membrane. Component of the microfilament system. Colocalizes with actin fibers at the cell border and along the stress fibers in growth-arrested fibroblasts. Mainly membrane-associated. When hyperphosphorylated, accumulates at membrane ruffles. |

图片



All lanes : Anti-GAS2 antibody [EPR1742(2)] (ab109762) at 1/1000 dilution

Lane 1 : HepG2 lysate

Lane 2 : Human fetal liver lysate

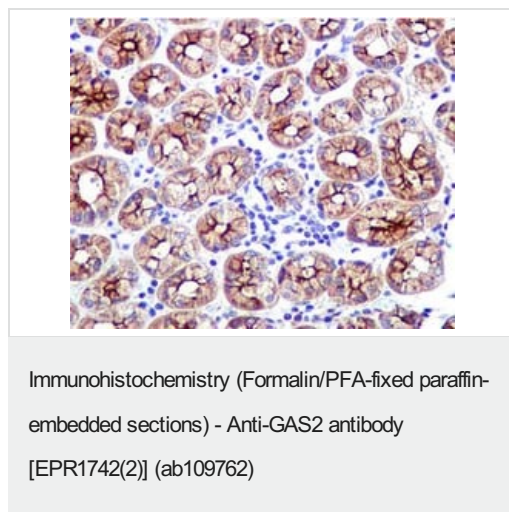
Lane 3 : Human fetal kidney lysate

Lane 4 : Jurkat lysate

Lysates/proteins at 10 µg per lane.

Predicted band size: 35 kDa

Observed band size: 35 kDa



Immunohistochemical analysis of paraffin-embedded Human stomach tissue using ab109762 at a dilution of 1/50.

Perform heat mediated antigen retrieval with citrate buffer pH 6 before commencing with IHC staining protocol.

Why choose a recombinant antibody?



Research with confidence
Consistent and reproducible results



Long-term and scalable supply
Recombinant technology



Success from the first experiment
Confirmed specificity



Ethical standards compliant
Animal-free production

Anti-GAS2 antibody [EPR1742(2)] (ab109762)

Please note: All products are "FOR RESEARCH USE ONLY. NOT FOR USE IN DIAGNOSTIC PROCEDURES"

Our Abpromise to you: Quality guaranteed and expert technical support

- Replacement or refund for products not performing as stated on the datasheet
- Valid for 12 months from date of delivery
- Response to your inquiry within 24 hours
- We provide support in Chinese, English, French, German, Japanese and Spanish
- Extensive multi-media technical resources to help you
- We investigate all quality concerns to ensure our products perform to the highest standards

If the product does not perform as described on this datasheet, we will offer a refund or replacement. For full details of the Abpromise, please visit <https://www.abcam.cn/abpromise> or contact our technical team.

Terms and conditions

- Guarantee only valid for products bought direct from Abcam or one of our authorized distributors