


# Anti-GAPDH antibody [GA1R] - Loading Control ab125247

★★★★★ [7 Abreviews](#) [116 References](#) [2 图像](#)

### 概述

<b>产品名称</b>	Anti-GAPDH抗体[GA1R] - Loading Control
<b>描述</b>	小鼠单克隆抗体[GA1R] to GAPDH - Loading Control
<b>宿主</b>	Mouse
<b>特异性</b>	ab125247 recognizes native and denatured forms of GAPDH.
<b>经测试应用</b>	<b>适用于:</b> WB
<b>种属反应性</b>	<b>与反应:</b> Mouse, Rat, Rabbit, Chicken, Hamster, Human, Saccharomyces cerevisiae, Escherichia coli, Spodoptera frugiperda (SF9 cells) <b>预测可用于:</b> a wide range of other species 
<b>免疫原</b>	Recombinant full length protein corresponding to Rabbit GAPDH.
<b>阳性对照</b>	Human, Mouse, Rat, Rabbit, Chicken and Hamster tissue lysates; BL-21 bacteria, Sf9 insect and Saccharomyces cerevisiae cell lysates
<b>常规说明</b>	Store at 4°C (add 0.05% NaN3) for several days to weeks.  This product was changed from ascites to tissue culture supernatant on 5 <sup>th</sup> February 2018. Please note that the dilutions may need to be adjusted accordingly. If you have any questions, please do not hesitate to contact our scientific support team.  The Life Science industry has been in the grips of a reproducibility crisis for a number of years. Abcam is leading the way in addressing this with our range of recombinant monoclonal antibodies and knockout edited cell lines for gold-standard validation. Please check that this product meets your needs before purchasing.  If you have any questions, special requirements or concerns, please send us an inquiry and/or contact our Support team ahead of purchase. Recommended alternatives for this product can be found below, along with publications, customer reviews and Q&As

### 性能

<b>形式</b>	Liquid
<b>存放说明</b>	Shipped at 4°C. Store at +4°C short term (1-2 weeks). Upon delivery aliquot. Store at -20°C long term. Avoid freeze / thaw cycle.
<b>存储溶液</b>	pH: 7.20 Preservative: 0.05% Sodium azide Constituent: 99% PBS

纯度	Protein A purified
纯化说明	Protein A affinity chromatography from TCS
克隆	单克隆
克隆编号	GA1R
同种型	IgG1

## 应用

**The Abpromise guarantee**      **Abpromise™**承诺保证使用ab125247于以下的经测试应用

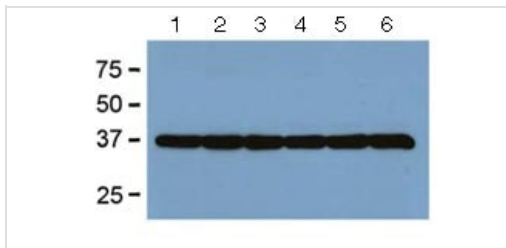
“应用说明”部分 下显示的仅为推荐的起始稀释度;实际最佳的稀释度/浓度应由使用者检定。

应用	Ab评论	说明
WB	★★★★★ (7)	1/1000 - 1/10000. Detects a band of approximately 37 kDa (predicted molecular weight: 36 kDa). with ECL.

## 靶标

功能	Has both glyceraldehyde-3-phosphate dehydrogenase and nitrosylase activities, thereby playing a role in glycolysis and nuclear functions, respectively. Participates in nuclear events including transcription, RNA transport, DNA replication and apoptosis. Nuclear functions are probably due to the nitrosylase activity that mediates cysteine S-nitrosylation of nuclear target proteins such as SIRT1, HDAC2 and PRKDC (By similarity). Glyceraldehyde-3-phosphate dehydrogenase is a key enzyme in glycolysis that catalyzes the first step of the pathway by converting D-glyceraldehyde 3-phosphate (G3P) into 3-phospho-D-glyceroyl phosphate.
通路	Carbohydrate degradation; glycolysis; pyruvate from D-glyceraldehyde 3-phosphate: step 1/5.
序列相似性	Belongs to the glyceraldehyde-3-phosphate dehydrogenase family.
翻译后修饰	S-nitrosylation of Cys-152 leads to interaction with SIAH1, followed by translocation to the nucleus. ISGylated.
细胞定位	Cytoplasm > cytosol. Nucleus. Cytoplasm > perinuclear region. Membrane. Translocates to the nucleus following S-nitrosylation and interaction with SIAH1, which contains a nuclear localization signal (By similarity). Postnuclear and Perinuclear regions.

## 图片



Western blot - Anti-GAPDH antibody [GA1R] - Loading Control (ab125247)

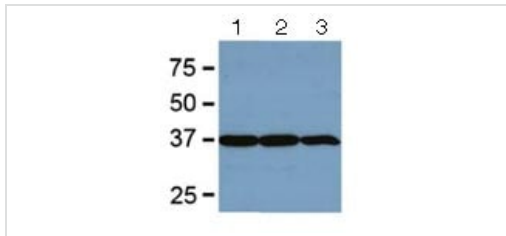
**All lanes :** Anti-GAPDH antibody [GA1R] - Loading Control (ab125247) at 1/2000 dilution

- Lane 1 :** Human tissue lysate
- Lane 2 :** Mouse tissue lysate
- Lane 3 :** Rat tissue lysate
- Lane 4 :** Rabbit tissue lysate
- Lane 5 :** Chicken tissue lysate
- Lane 6 :** Hamster tissue lysate

Lysates/proteins at 5 µg per lane.

Developed using the ECL technique.

**Predicted band size:** 36 kDa



Western blot - Anti-GAPDH antibody [GA1R] - Loading Control (ab125247)

**All lanes :** Anti-GAPDH antibody [GA1R] - Loading Control (ab125247) at 1/2000 dilution

- Lane 1 :** BL21 bacterial lysate
- Lane 2 :** Sf9 insect lysate
- Lane 3 :** Saccharomyces cerevisiae lysate

Lysates/proteins at 5 µg per lane.

Developed using the ECL technique.

**Predicted band size:** 36 kDa

**Please note:** All products are "FOR RESEARCH USE ONLY. NOT FOR USE IN DIAGNOSTIC PROCEDURES"

### Our Abpromise to you: Quality guaranteed and expert technical support

- Replacement or refund for products not performing as stated on the datasheet
- Valid for 12 months from date of delivery
- Response to your inquiry within 24 hours
- We provide support in Chinese, English, French, German, Japanese and Spanish
- Extensive multi-media technical resources to help you
- We investigate all quality concerns to ensure our products perform to the highest standards

If the product does not perform as described on this datasheet, we will offer a refund or replacement. For full details of the Abpromise, please visit <https://www.abcam.cn/abpromise> or contact our technical team.

## Terms and conditions

---

- Guarantee only valid for products bought direct from Abcam or one of our authorized distributors