

Anti-GANAB antibody ab96757

7 图像

概述	
产品名称	Anti-GANAB抗体
描述	兔多克隆抗体to GANAB
宿主	Rabbit
经测试应用	适用于: WB, IHC-P, ICC/IF
种属反应性	与反应: Mouse, Human
免疫原	Recombinant fragment corresponding to Human GANAB aa 97-261.
阳性对照	293T, A431, H1299, HeLaS3, HepG2, Molt-4, Raji and NIH-3T3 whole cell lysates; HeLa cells; SW480 xenograft; human breasr carcinoma tissue.
常规说明	<p>The Life Science industry has been in the grips of a reproducibility crisis for a number of years. Abcam is leading the way in addressing this with our range of recombinant monoclonal antibodies and knockout edited cell lines for gold-standard validation. Please check that this product meets your needs before purchasing.</p> <p>If you have any questions, special requirements or concerns, please send us an inquiry and/or contact our Support team ahead of purchase. Recommended alternatives for this product can be found below, along with publications, customer reviews and Q&amp;As</p>
性能	
形式	Liquid
存放说明	Shipped at 4°C. Upon delivery aliquot. Store at -20°C or -80°C. Avoid freeze / thaw cycle.
存储溶液	pH: 7.00 Preservative: 0.01% Thimerosal (merthiolate) Constituents: 1.21% Tris, 0.75% Glycine, 10% Glycerol (glycerin, glycerine)
纯度	Immunogen affinity purified
克隆	多克隆
同种型	IgG
应用	

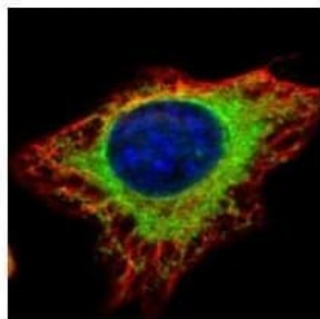
“应用说明”部分 下显示的仅为推荐的起始稀释度;实际最佳的稀释度/浓度应由使用者检定。

应用	Ab评论	说明
WB		1/500 - 1/3000. Predicted molecular weight: 107 kDa.
IHC-P		1/100 - 1/500.
ICC/IF		1/100 - 1/500.

## 靶标

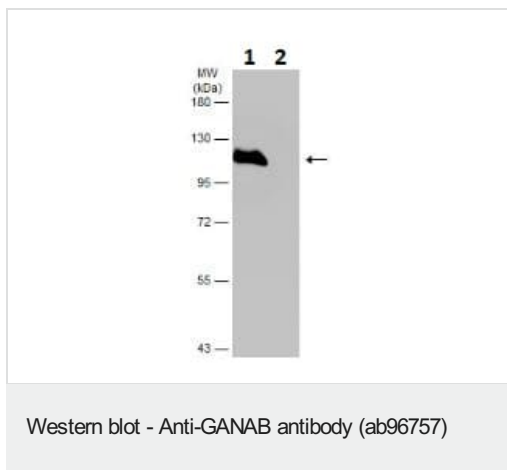
功能	Cleaves sequentially the 2 innermost alpha-1,3-linked glucose residues from the Glc(2)Man(9)GlcNAc(2) oligosaccharide precursor of immature glycoproteins.
组织特异性	Detected in placenta.
通路	Glycan metabolism; N-glycan metabolism.
序列相似性	Belongs to the glycosyl hydrolase 31 family.
细胞定位	Endoplasmic reticulum. Golgi apparatus. Melanosome. Identified by mass spectrometry in melanosome fractions from stage I to stage IV.

## 图片



Methanol-fixed HeLa (human epithelial cell line from cervix adenocarcinoma) cells stained for GANAB using ab96757 at 1/500 dilution (green) in ICC/IF. Alpha tubulin filaments are detected with an anti-Alpha tubulin antibody (red).

Immunocytochemistry/ Immunofluorescence - Anti-GANAB antibody (ab96757)



**All lanes :** Anti-GANAB antibody (ab96757) at 1/1000 dilution

**Lane 1 :** Wild-type HeLa (human epithelial cell line from cervix adenocarcinoma) cell extract

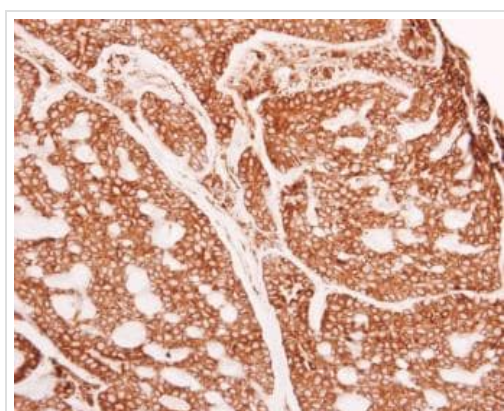
**Lane 2 :** GANAB knockout HeLa cell extract

Lysates/proteins at 30 µg per lane.

### Secondary

**All lanes :** Anti-Rabbit IgG HRP

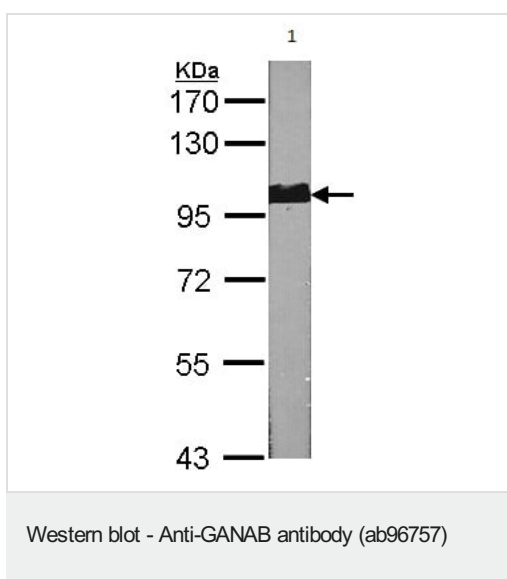
**Predicted band size:** 107 kDa



Immunohistochemistry (Formalin/PFA-fixed paraffin-embedded sections) - Anti-GANAB antibody (ab96757)

Paraffin-embedded human breast carcinoma tissue stained for GANAB using ab96757 at 1/500 dilution in immunohistochemical analysis.

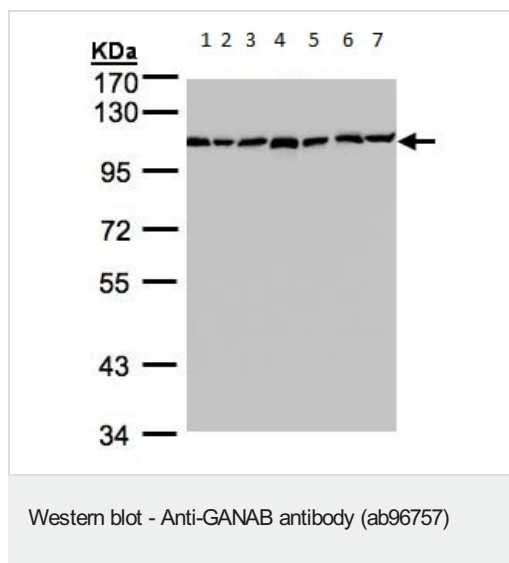
Antigen Retrieval: Citrate buffer, pH 6.0, 15 min.



Anti-GANAB antibody (ab96757) at 1/1000 dilution + NIH-3T3 whole cell lysate at 30 µg

**Predicted band size:** 107 kDa

7.5% SDS PAGE



**All lanes :** Anti-GANAB antibody (ab96757) at 1/1000 dilution

**Lane 1 :** 293T whole cell lysate

**Lane 2 :** A431 whole cell lysate

**Lane 3 :** H1299 whole cell lysate

**Lane 4 :** HeLa S3 whole cell lysate

**Lane 5 :** HepG2 whole cell lysate

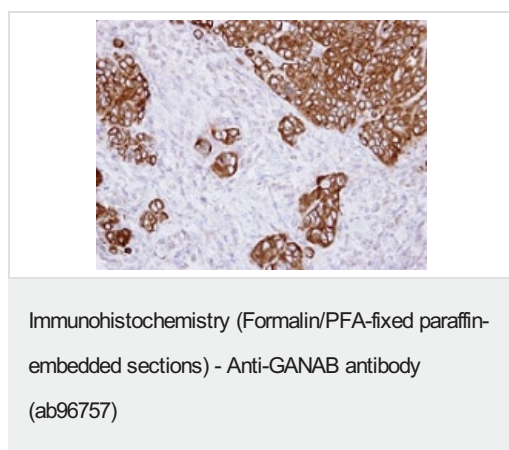
**Lane 6 :** Molt-4 whole cell lysate

**Lane 7 :** Raji whole cell lysate

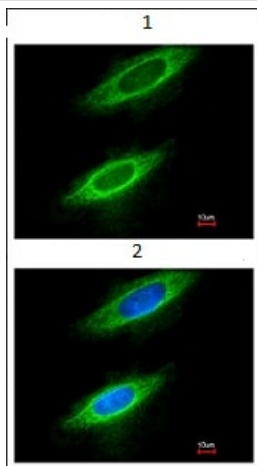
Lysates/proteins at 30 µg per lane.

**Predicted band size:** 107 kDa

#### 7.5% SDS PAGE



Immunohistochemical analysis of GANAB in paraffin-embedded SW480 xenograft, using ab96757 at 1/500 dilution.



Immunofluorescence analysis of GANAB in methanol-fixed HeLa cells, using ab96757 at 1/200 dilution (1) and costained with Hoechst 33342 (2).

Immunocytochemistry/ Immunofluorescence - Anti-GANAB antibody (ab96757)

**Please note:** All products are "FOR RESEARCH USE ONLY. NOT FOR USE IN DIAGNOSTIC PROCEDURES"

### Our Abpromise to you: Quality guaranteed and expert technical support

- Replacement or refund for products not performing as stated on the datasheet
- Valid for 12 months from date of delivery
- Response to your inquiry within 24 hours
- We provide support in Chinese, English, French, German, Japanese and Spanish
- Extensive multi-media technical resources to help you
- We investigate all quality concerns to ensure our products perform to the highest standards

If the product does not perform as described on this datasheet, we will offer a refund or replacement. For full details of the Abpromise, please visit <https://www.abcam.cn/abpromise> or contact our technical team.

### Terms and conditions

- Guarantee only valid for products bought direct from Abcam or one of our authorized distributors