

Anti-gamma Tubulin antibody ab11321

★★★★★ [4 Abreviews](#) [23 References](#) [5 图像](#)

概述

产品名称	Anti-gamma Tubulin抗体
描述	兔多克隆抗体to gamma Tubulin
宿主	Rabbit
经测试应用	适用于: ICC, WB
种属反应性	与反应: Mouse, Rat, Dog, Human, Chinese hamster
免疫原	Synthetic peptide: AATRPDYISWGTQEQ-CG , with N-terminally added cysteine-glycine, conjugated to KLH, corresponding to amino acids 437-451 of Xenopus laevis gamma Tubulin.

 [Run BLAST with](#)

 [Run BLAST with](#)

常规说明

Storage in frost-free freezers is not recommended. If slight turbidity occurs upon prolonged storage, clarify the solution by centrifugation before use. Working dilution samples should be discarded if not used within 12 hours.

The Life Science industry has been in the grips of a reproducibility crisis for a number of years. Abcam is leading the way in addressing this with our range of recombinant monoclonal antibodies and knockout edited cell lines for gold-standard validation. Please check that this product meets your needs before purchasing.

If you have any questions, special requirements or concerns, please send us an inquiry and/or contact our Support team ahead of purchase. Recommended alternatives for this product can be found below, along with publications, customer reviews and Q&As

性能

形式	Liquid
存放说明	Shipped at 4°C. Upon delivery aliquot and store at -20°C or -80°C. Avoid repeated freeze / thaw cycles.
存储溶液	pH: 7.40 Preservative: 0.097% Sodium azide Constituent: 0.0268% PBS
纯度	IgG fraction
克隆	多克隆

同种型

IgG

应用

The Abpromise guarantee

Abpromise™承诺保证使用ab11321于以下的经测试应用

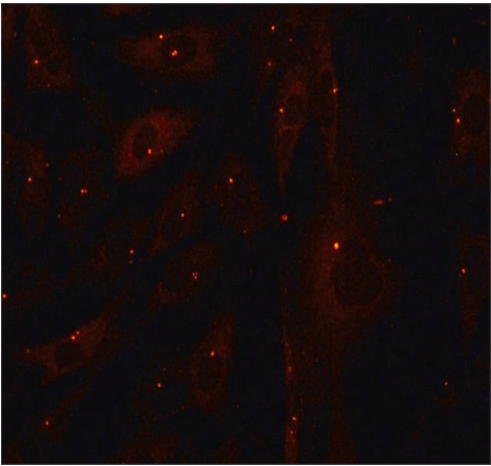
“应用说明”部分 下显示的仅为推荐的起始稀释度;实际最佳的稀释度/浓度应由使用者检定。

应用	Ab评论	说明
ICC		1/1000.
WB	★★★★★ (1)	1/1000. Predicted molecular weight: 51 kDa.

靶标

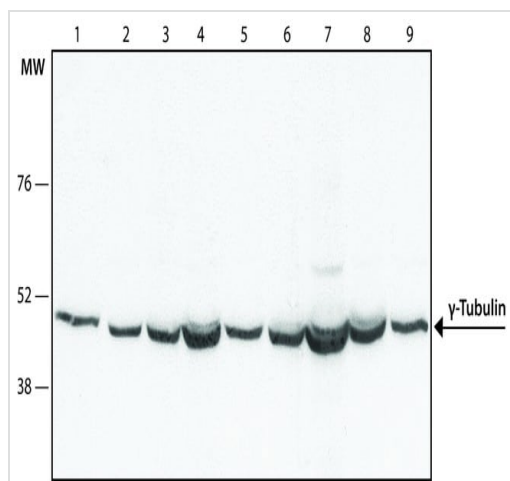
功能	Tubulin is the major constituent of microtubules. Gamma tubulin is found at microtubule organizing centers (MTOC) such as the spindle poles or the centrosome. Pericentriolar matrix component that regulates alpha/beta tubulin minus-end nucleation, centrosome duplication and spindle formation.
序列相似性	Belongs to the tubulin family.
翻译后修饰	Phosphorylation at Ser-131 by BRSK1 regulates centrosome duplication, possibly by mediating relocation of gamma-tubulin and its associated proteins from the cytoplasm to the centrosome.
细胞定位	Cytoplasm > cytoskeleton > centrosome.

图片



Immunocytochemistry - Anti-gamma Tubulin antibody (ab11321)

Immunocytochemistry analysis of Rat 1 cells labeling gamma Tubulin with ab11321 at 1/1000 dilution, followed by Goat Anti-Rabbit IgG, Cy3™ conjugate. Cells were fixed and permeabilized with methanol followed by acetone.



Western blot - Anti-gamma Tubulin antibody (ab11321)

All lanes : Anti-gamma Tubulin antibody (ab11321) at 1/1000 dilution

Lane 1 : HeLa cell lysate

Lane 2 : NIH-3T3 cell lysate

Lane 3 : MDCK cell lysate

Lane 4 : CHO cell lysate

Lane 5 : Rat-2 cell lysate

Lane 6 : A431 cell lysate

Lane 7 : Jurkat cell lysate

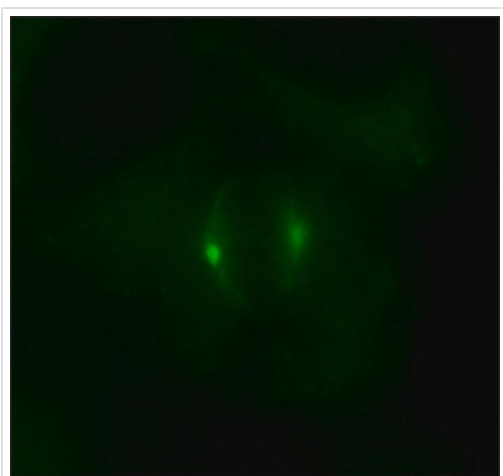
Lane 8 : U87 cell lysate

Lane 9 : C2C12 cell lysate

Secondary

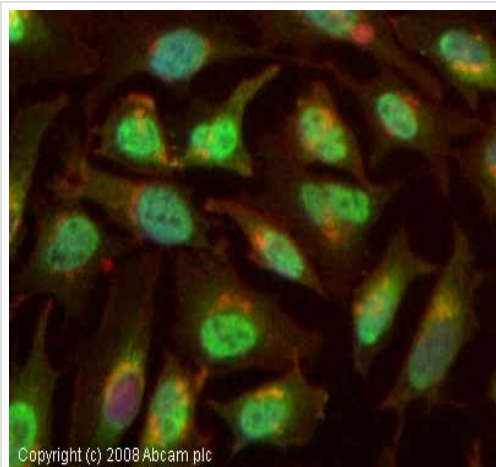
All lanes : Goat Anti-Rabbit IgG-peroxidase

Predicted band size: 51 kDa



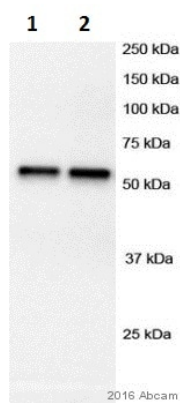
Immunocytochemistry - Anti-gamma Tubulin antibody (ab11321)

Immunocytochemistry analysis of HeLa cells labeling gamma Tubulin with ab11321 at 1/1000 dilution, followed by Goat Anti-Rabbit IgG, Atto-488 conjugate. Cells were fixed and permeabilized with methanol followed by acetone.



Immunocytochemistry - Anti-gamma Tubulin antibody (ab11321)

ICC/IF image of ab11321 stained HeLa cells. The cells were 4% PFA fixed (10 min) and then incubated in 1% BSA / 10% normal goat serum / 0.3M glycine in 0.1% PBS-Tween for 1h to permeabilise the cells and block non-specific protein-protein interactions. The cells were then incubated with the antibody (ab11321, 5 µg/ml) overnight at +4°C. The secondary antibody (green) was Alexa Fluor® 488 goat anti-rabbit IgG (H+L) used at a 1/1000 dilution for 1h. Alexa Fluor® 594 WGA was used to label plasma membranes (red) at a 1/200 dilution for 1h. DAPI was used to stain the cell nuclei (blue). This antibody also gave a positive IF result in Hek293, HepG2 and MCF7 cells.



Western blot - Anti-gamma Tubulin antibody (ab11321)

All lanes : Anti-gamma Tubulin antibody (ab11321) at 1/1000 dilution

Lane 1 : Mouse liver tissue lysate

Lane 2 : Mouse hepatocytes whole cell lysate

Lysates/proteins at 20 µg per lane.

Secondary

All lanes : Goat anti-rabbit (HRP) secondary antibody at 1/5000 dilution

Developed using the ECL technique.

Performed under reducing conditions.

Predicted band size: 51 kDa

Observed band size: 50 kDa

Exposure time: 5 seconds

Blocking buffer 5% milk.

Please note: All products are "FOR RESEARCH USE ONLY. NOT FOR USE IN DIAGNOSTIC PROCEDURES"

Our Abpromise to you: Quality guaranteed and expert technical support

- Replacement or refund for products not performing as stated on the datasheet
- Valid for 12 months from date of delivery
- Response to your inquiry within 24 hours
- We provide support in Chinese, English, French, German, Japanese and Spanish
- Extensive multi-media technical resources to help you
- We investigate all quality concerns to ensure our products perform to the highest standards

If the product does not perform as described on this datasheet, we will offer a refund or replacement. For full details of the Abpromise, please visit <https://www.abcam.cn/abpromise> or contact our technical team.

Terms and conditions

- Guarantee only valid for products bought direct from Abcam or one of our authorized distributors