

Anti-gamma Synuclein/SNCG antibody ab55424

★★★★★ [9 Abreviews](#) [22 References](#) [2 图像](#)

概述

产品名称	Anti-gamma Synuclein/SNCG抗体
描述	兔多克隆抗体to gamma Synuclein/SNCG
宿主	Rabbit
经测试应用	适用于: ELISA, ICC/IF, IHC-Fr, WB, IHC-P
种属反应性	与反应: Mouse, Rat, Human
免疫原	Synthetic peptide. This information is proprietary to Abcam and/or its suppliers.
常规说明	<p>The Life Science industry has been in the grips of a reproducibility crisis for a number of years. Abcam is leading the way in addressing this with our range of recombinant monoclonal antibodies and knockout edited cell lines for gold-standard validation. Please check that this product meets your needs before purchasing.</p> <p>If you have any questions, special requirements or concerns, please send us an inquiry and/or contact our Support team ahead of purchase. Recommended alternatives for this product can be found below, along with publications, customer reviews and Q&As</p>

性能

形式	Liquid
存放说明	Shipped at 4°C. Store at -20°C. Stable for 12 months at -20°C.
存储溶液	pH: 7.40 Preservative: 0.02% Sodium azide Constituents: 50% Glycerol, 0.87% Sodium chloride, PBS
纯度	Without Mg+2 and Ca+2
克隆	Immunogen affinity purified
同种型	多克隆 IgG

应用

The Abpromise guarantee

Abpromise™ 承诺保证使用ab55424于以下的经测试应用

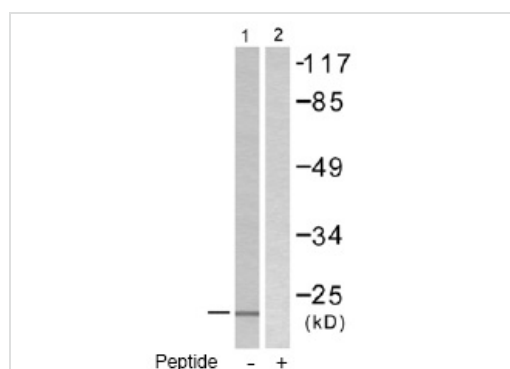
“应用说明”部分 下显示的仅为推荐的起始稀释度;实际最佳的稀释度/浓度应由使用者检定。

应用	Ab评论	说明
ELISA		Use at an assay dependent concentration.
ICC/IF	★★★★★ (1)	Use at an assay dependent concentration.
IHC-Fr	★★★★★ (4)	Use at an assay dependent concentration.
WB	★★★★★ (3)	1/500 - 1/1000. Detects a band of approximately 13 kDa (predicted molecular weight: 13 kDa).
IHC-P		Use at an assay dependent concentration.

靶标

功能	Plays a role in neurofilament network integrity. May be involved in modulating axonal architecture during development and in the adult. In vitro, increases the susceptibility of neurofilament-H to calcium-dependent proteases (By similarity). May also function in modulating the keratin network in skin. Activates the MAPK and Elk-1 signal transduction pathway.
组织特异性	Highly expressed in brain, particularly in the substantia nigra. Also expressed in the corpus callosum, heart, skeletal muscle, ovary, testis, colon and spleen. Weak expression in pancreas, kidney and lung.
序列相似性	Belongs to the synuclein family.
翻译后修饰	Phosphorylated. Phosphorylation by GRK5 appears to occur on residues distinct from the residue phosphorylated by other kinases.
细胞定位	Cytoplasm > perinuclear region. Cytoplasm > cytoskeleton > centrosome. Cytoplasm > cytoskeleton > spindle. Associated with centrosomes in several interphase cells. In mitotic cells, localized to the poles of the spindle.

图片



Western blot - Anti-gamma Synuclein/SNCG antibody (ab55424)

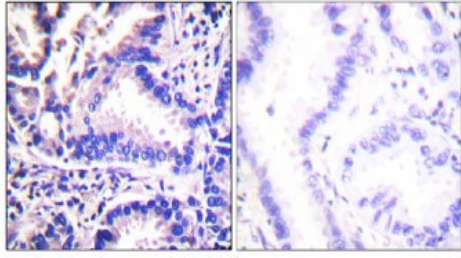
All lanes : Anti-gamma Synuclein/SNCG antibody (ab55424) at 1/500 dilution

Lane 1 : HT29 cell extract, without immunizing peptide

Lane 2 : HT29 cell extract, with immunizing peptide

Predicted band size: 13 kDa

Observed band size: 13 kDa



Peptide - +

Immunohistochemistry (Formalin/PFA-fixed paraffin-embedded sections) - Anti-gamma Synuclein/SNCG antibody (ab55424)

Immunohistochemical analysis of paraffin-embedded human lung carcinoma tissue using ab55424 (1/50 dilution), in the presence or absence of the immunizing peptide.

Please note: All products are "FOR RESEARCH USE ONLY. NOT FOR USE IN DIAGNOSTIC PROCEDURES"

Our Abpromise to you: Quality guaranteed and expert technical support

- Replacement or refund for products not performing as stated on the datasheet
- Valid for 12 months from date of delivery
- Response to your inquiry within 24 hours

- We provide support in Chinese, English, French, German, Japanese and Spanish
- Extensive multi-media technical resources to help you
- We investigate all quality concerns to ensure our products perform to the highest standards

If the product does not perform as described on this datasheet, we will offer a refund or replacement. For full details of the Abpromise, please visit <https://www.abcam.cn/abpromise> or contact our technical team.

Terms and conditions

- Guarantee only valid for products bought direct from Abcam or one of our authorized distributors