


# Anti-gamma Actin antibody [2A3] ab123034

★★★★★ [4 Abreviews](#) [16 References](#) [4 图像](#)

### 概述

<b>产品名称</b>	Anti-gamma Actin抗体[2A3]
<b>描述</b>	小鼠单克隆抗体[2A3] to gamma Actin
<b>宿主</b>	Mouse
<b>特异性</b>	<p>This antibody does not cross react with other actin isoforms. The epitope recognized by ab123034 is highly conserved and the antibody is therefore expected to react with many other species.</p> <p>This antibody is highly specific for gamma-cytoplasmic actin (<math>\gamma</math>-actin 1; encoded by ACTG1). It does not cross-react with the gamma-actin isoform expressed in the enteric smooth muscle tissues (<math>\gamma</math>-actin 2; encoded by ACTG2).</p>
<b>经测试应用</b>	<b>适用于:</b> ELISA, IHC-Fr, WB, Flow Cyt, IHC-P, IHC-P, ICC/IF
<b>种属反应性</b>	<b>与反应:</b> Mouse, Rat, Rabbit, Chicken, Human, Pig, Zebrafish <b>预测可用于:</b> a wide range of other species 
<b>免疫原</b>	Synthetic peptide (Ac- EEEIAALVI -COOH) with an acetylated N-terminus and conjugated to KLH by a Cysteine residue linker, corresponding to N terminal amino acids 2-10 of Human gamma Actin <a href="#">Run BLAST with</a> <a href="#">Run BLAST with</a>
<b>阳性对照</b>	ICC/IF: Human dermal fibroblast cells. IHC-P: Human small intestine and heart tissue.
<b>常规说明</b>	<p>The Life Science industry has been in the grips of a reproducibility crisis for a number of years. Abcam is leading the way in addressing this with our range of recombinant monoclonal antibodies and knockout edited cell lines for gold-standard validation. Please check that this product meets your needs before purchasing.</p> <p>If you have any questions, special requirements or concerns, please send us an inquiry and/or contact our Support team ahead of purchase. Recommended alternatives for this product can be found below, along with publications, customer reviews and Q&amp;As</p>

### 性能

<b>形式</b>	Liquid
<b>存放说明</b>	Shipped at 4°C. Upon delivery aliquot and store at -20°C. Avoid freeze / thaw cycles.
<b>存储溶液</b>	Preservative: 0.09% Sodium azide

	Constituent: 99% PBS
纯度	Protein G purified
克隆	单克隆
克隆编号	2A3
骨髓瘤	NS0
同种型	IgG2b

## 应用

**The Abpromise guarantee**      **Abpromise™** 承诺保证使用 ab123034 于以下的经测试应用

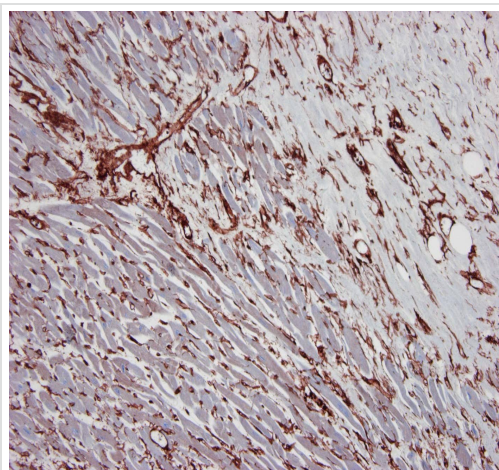
“应用说明”部分 下显示的仅为推荐的起始稀释度;实际最佳的稀释度/浓度应由使用者检定。

应用	Ab评论	说明
ELISA		Use at an assay dependent concentration.
IHC-Fr		Use at an assay dependent concentration.
WB	★★★★★ (2)	Use at an assay dependent concentration. Predicted molecular weight: 42 kDa.
Flow Cyt		Use at an assay dependent concentration. <b>ab170192</b> - Mouse monoclonal IgG2b, is suitable for use as an isotype control with this antibody.
IHC-P	★★★★★ (2)	1/100 - 1/500.
IHC-P		Use at an assay dependent concentration.
ICC/IF		1/500.

## 靶标

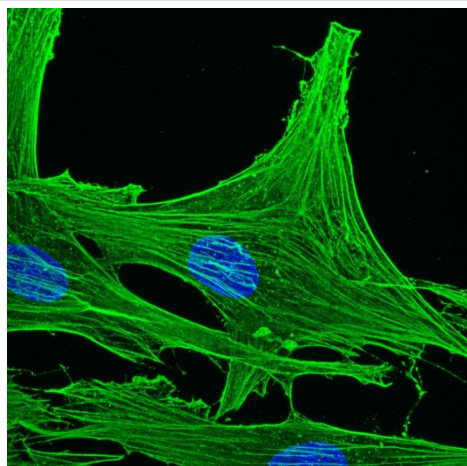
功能	Actins are highly conserved proteins that are involved in various types of cell motility and are ubiquitously expressed in all eukaryotic cells.
疾病相关	Defects in ACTG1 are the cause of deafness autosomal dominant type 20 (DFNA20) [MIM:604717]; also called autosomal dominant deafness type 26 (DFNA26). DFNA20 is a form of sensorineural hearing loss. Sensorineural deafness results from damage to the neural receptors of the inner ear, the nerve pathways to the brain, or the area of the brain that receives sound information.
序列相似性	Belongs to the actin family.
翻译后修饰	The methylhistidine determined by Bienvenut et al is assumed to be the tele-methylhistidine isomer by similarity to the mouse ortholog.
细胞定位	Cytoplasm > cytoskeleton.

## 图片



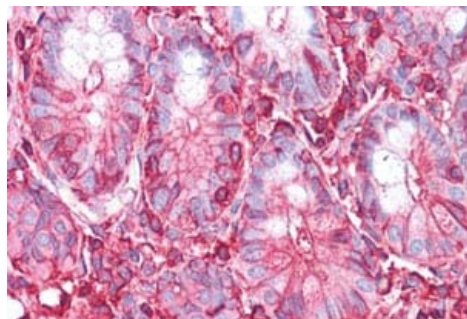
Immunohistochemical analysis of paraffin embedded human heart tissue immunostained for gamma cytoplasmic actin using ab123034 at 1/100 dilution.

Immunohistochemistry (Formalin/PFA-fixed paraffin-embedded sections) - Anti-gamma Actin antibody [2A3] (ab123034)



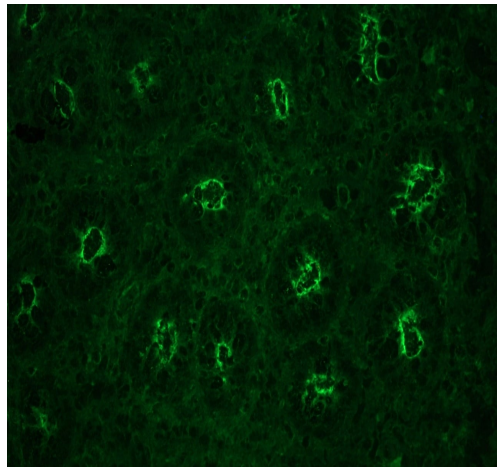
Human dermal fibroblasts stained for gamma Actin (green) using ab123034 at 1/500 dilution in ICC/IF.

Immunocytochemistry/ Immunofluorescence - Anti-gamma Actin antibody [2A3] (ab123034)



Immunohistochemical analysis of paraffin embedded Human small intestine tissue labelled with Anti-gamma Actin antibody [2A3] at 5 µg/ml

Immunohistochemistry (Formalin/PFA-fixed paraffin-embedded sections) - Anti-gamma Actin antibody [2A3] (ab123034)



ab123034 (1:1000 dilution) stainign gamma Actin in the epithelial villi and smooth muscle cells in swine colon.

Immunohistochemistry (Formalin/PFA-fixed paraffin-embedded sections) - Anti-gamma Actin antibody [2A3] (ab123034)

**Please note:** All products are "FOR RESEARCH USE ONLY. NOT FOR USE IN DIAGNOSTIC PROCEDURES"

### Our Abpromise to you: Quality guaranteed and expert technical support

---

- Replacement or refund for products not performing as stated on the datasheet
- Valid for 12 months from date of delivery
- Response to your inquiry within 24 hours
- We provide support in Chinese, English, French, German, Japanese and Spanish
- Extensive multi-media technical resources to help you
- We investigate all quality concerns to ensure our products perform to the highest standards

If the product does not perform as described on this datasheet, we will offer a refund or replacement. For full details of the Abpromise, please visit <https://www.abcam.cn/abpromise> or contact our technical team.

### Terms and conditions

---

- Guarantee only valid for products bought direct from Abcam or one of our authorized distributors