

Anti-GALNTL6 antibody ab122149

2 图像

概述

产品名称	Anti-GALNTL6抗体
描述	兔多克隆抗体to GALNTL6
宿主	Rabbit
经测试应用	适用于: WB, IHC-P
种属反应性	与反应: Human
免疫原	antigen sequence corresponding to amino acids 33-114 (DKHLVKS AEP GEQQT FPLGL GDGQFY SWTD GLRRKD WHDY ESIQKEAMRS GKGEHGKPYP LTEEDHDDSA YRENGFNIFV SN) of Human GALNTL6. Run BLAST with Expasy Run BLAST with NCBI
阳性对照	Human Placenta tissue; RT-4 and U-251 MG cell lysate.
常规说明	<p>The Life Science industry has been in the grips of a reproducibility crisis for a number of years. Abcam is leading the way in addressing this with our range of recombinant monoclonal antibodies and knockout edited cell lines for gold-standard validation. Please check that this product meets your needs before purchasing.</p> <p>If you have any questions, special requirements or concerns, please send us an inquiry and/or contact our Support team ahead of purchase. Recommended alternatives for this product can be found below, along with publications, customer reviews and Q&As</p>

性能

形式	Liquid
存放说明	Shipped at 4°C. Upon delivery aliquot and store at -20°C. Avoid freeze / thaw cycles.
存储溶液	pH: 7.20 Preservative: 0.02% Sodium azide Constituents: 59% PBS, 40% Glycerol (glycerin, glycerine)
纯度	Immunogen affinity purified
克隆	多克隆
同种型	IgG

应用

The Abpromise guarantee

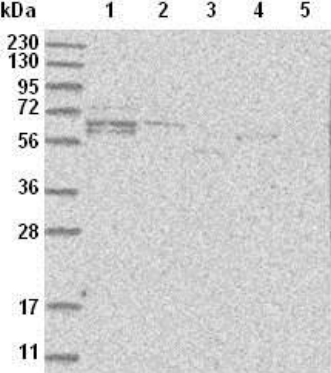
Abpromise™承诺保证使用ab122149于以下的经测试应用

“应用说明”部分 下显示的仅为推荐的起始稀释度;实际最佳的稀释度/浓度应由使用者检定。

应用	Ab评论	说明
WB		Use a concentration of 0.04 - 0.4 µg/ml.
IHC-P		1/50 - 1/200. Perform heat mediated antigen retrieval with citrate buffer pH 6 before commencing with IHC staining protocol.

靶标	
功能	Catalyzes the initial reaction in O-linked oligosaccharide biosynthesis, the transfer of an N-acetyl-D-galactosamine residue to a serine or threonine residue on the protein receptor.
通路	Protein modification; protein glycosylation.
序列相似性	Belongs to the glycosyltransferase 2 family. GalNAc-T subfamily. Contains 1 ricin B-type lectin domain.
结构域	There are two conserved domains in the glycosyltransferase region: the N-terminal domain (domain A, also called GT1 motif), which is probably involved in manganese coordination and substrate binding and the C-terminal domain (domain B, also called Gal/GalNAc-T motif), which is probably involved in catalytic reaction and UDP-Gal binding. The ricin B-type lectin domain binds to GalNAc and contributes to the glycopeptide specificity.
细胞定位	Golgi apparatus membrane.

图片



Western blot - Anti-GALNTL6 antibody (ab122149)

All lanes : Anti-GALNTL6 antibody (ab122149) at 1/250 dilution

Lane 1 : RT-4 cell lysate

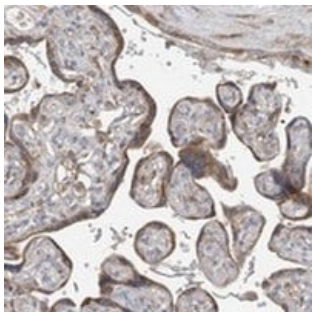
Lane 2 : U-251 MG cell lysate

Lane 3 : Human Plasma

Lane 4 : Human Liver lysate

Lane 5 : Human Tonsil lysate

Developed using the ECL technique.



ab122149, at 1/135, staining GALNTL6 in paraffin-embedded Human placenta tissue by Immunohistochemistry.

Immunohistochemistry (Formalin/PFA-fixed paraffin-embedded sections) - Anti-GALNTL6 antibody (ab122149)

Please note: All products are "FOR RESEARCH USE ONLY. NOT FOR USE IN DIAGNOSTIC PROCEDURES"

Our Abpromise to you: Quality guaranteed and expert technical support

- Replacement or refund for products not performing as stated on the datasheet
- Valid for 12 months from date of delivery
- Response to your inquiry within 24 hours
- We provide support in Chinese, English, French, German, Japanese and Spanish
- Extensive multi-media technical resources to help you
- We investigate all quality concerns to ensure our products perform to the highest standards

If the product does not perform as described on this datasheet, we will offer a refund or replacement. For full details of the Abpromise, please visit <https://www.abcam.cn/abpromise> or contact our technical team.

Terms and conditions

- Guarantee only valid for products bought direct from Abcam or one of our authorized distributors