

Anti-Galectin 8/Gal-8 antibody ab69631

2 References 2 图像

概述	
产品名称	Anti-Galectin 8/Gal-8抗体
描述	兔多克隆抗体to Galectin 8/Gal-8
宿主	Rabbit
经测试应用	适用于: WB, IHC-P
种属反应性	与反应: Mouse, Human
免疫原	Synthetic peptide. This information is proprietary to Abcam and/or its suppliers.
常规说明	<p>The Life Science industry has been in the grips of a reproducibility crisis for a number of years. Abcam is leading the way in addressing this with our range of recombinant monoclonal antibodies and knockout edited cell lines for gold-standard validation. Please check that this product meets your needs before purchasing.</p> <p>If you have any questions, special requirements or concerns, please send us an inquiry and/or contact our Support team ahead of purchase. Recommended alternatives for this product can be found below, along with publications, customer reviews and Q&amp;As</p>
性能	
形式	Liquid
存放说明	Shipped at 4°C. Upon delivery aliquot and store at -20°C. Avoid freeze / thaw cycles.
存储溶液	pH: 7.40 Preservative: 0.02% Sodium azide Constituents: 50% Glycerol (glycerin, glycerine), 0.87% Sodium chloride, PBS
纯度	Without Mg2+ and Ca2+
克隆	Immunogen affinity purified
同种型	多克隆 IgG
应用	

“应用说明”部分 下显示的仅为推荐的起始稀释度;实际最佳的稀释度/浓度应由使用者检定。

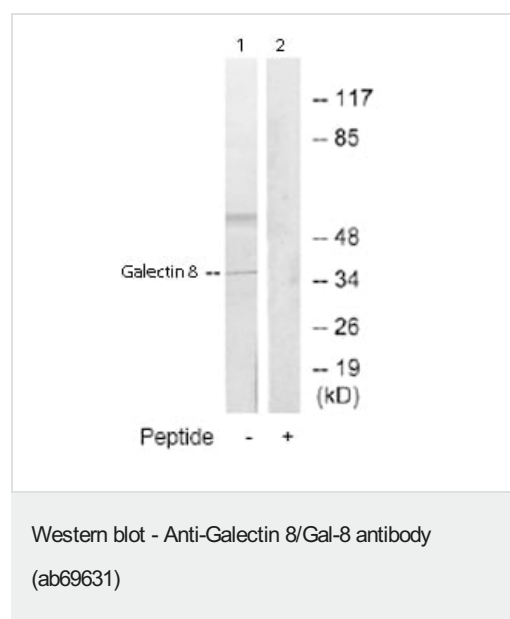
应用	Ab评论	说明
WB		
IHC-P		

应用说明	<p>ELISA: 1/20000.</p> <p>IHC-P: 1/50 - 1/100.</p> <p>WB: 1/500 - 1/1000. Detects bands of approximately 36 and 60 kDa (predicted molecular weight: 36 kDa).</p> <p>Not yet tested in other applications.</p> <p>Optimal dilutions/concentrations should be determined by the end user.</p>
------	---

## 靶标

组织特异性	Ubiquitous. Selective expression by prostate carcinomas versus normal prostate and benign prostatic hypertrophy.
序列相似性	Contains 2 galectin domains.
结构域	Contains two homologous but distinct carbohydrate-binding domains.
细胞定位	Cytoplasm.

## 图片



**All lanes :** Anti-Galectin 8/Gal-8 antibody (ab69631) at 1/500 dilution

**Lane 1 :** extracts of 3T3 cells

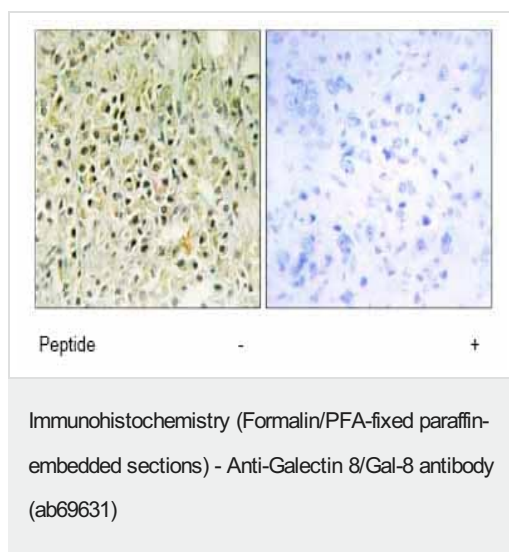
**Lane 2 :** extracts of 3T3 cells with immunising peptide at 5 µg

Lysates/proteins at 5 µg per lane.

**Predicted band size:** 36 kDa

**Observed band size:** 36 kDa

**Additional bands at:** 60 kDa. We are unsure as to the identity of these extra bands.



Immunohistochemistry analysis of paraffin-embedded human prostate carcinoma tissue using ab69631 at 1:50 dilution. Left image un-treated. Right image treated with immunizing peptide.

**Please note:** All products are "FOR RESEARCH USE ONLY. NOT FOR USE IN DIAGNOSTIC PROCEDURES"

### Our Abpromise to you: Quality guaranteed and expert technical support

---

- Replacement or refund for products not performing as stated on the datasheet
- Valid for 12 months from date of delivery
- Response to your inquiry within 24 hours
- We provide support in Chinese, English, French, German, Japanese and Spanish
- Extensive multi-media technical resources to help you
- We investigate all quality concerns to ensure our products perform to the highest standards

If the product does not perform as described on this datasheet, we will offer a refund or replacement. For full details of the Abpromise, please visit <https://www.abcam.cn/abpromise> or contact our technical team.

### Terms and conditions

---

- Guarantee only valid for products bought direct from Abcam or one of our authorized distributors