


Anti-Galectin 3 antibody ab31707

敲除验证

★★★★☆ 3 Abreviews 10 References 3 图像

概述

产品名称	Anti-Galectin 3抗体
描述	兔多克隆抗体to Galectin 3
宿主	Rabbit
特异性	From Jan 2024, QC testing of replenishment batches of this polyclonal changed. All tested and expected application and reactive species combinations are still covered by our Abcam product promise. However, we no longer test all applications. For more information on a specific batch, please contact our Scientific Support who will be happy to help. You may also be interested in our alternative recombinant antibody, <a href="#">ab76245</a> .
经测试应用	适用于: ICC/IF, WB
种属反应性	与反应: Human 预测可用于: Dog, Pig 
免疫原	Synthetic peptide corresponding to Human Galectin 3 aa 200 to the C-terminus (C terminal) conjugated to keyhole limpet haemocyanin. (Peptide available as <a href="#">ab31706</a> )
阳性对照	Recombinant human Galectin 3 protein ( <a href="#">ab50236</a> ) can be used as a positive control in WB. HeLa (Human epithelial carcinoma cell line) Whole Cell and Nuclear Lysates.
常规说明	<p>The Life Science industry has been in the grips of a reproducibility crisis for a number of years. Abcam is leading the way in addressing this with our range of recombinant monoclonal antibodies and knockout edited cell lines for gold-standard validation. Please check that this product meets your needs before purchasing.</p> <p>If you have any questions, special requirements or concerns, please send us an inquiry and/or contact our Support team ahead of purchase. Recommended alternatives for this product can be found below, along with publications, customer reviews and Q&amp;As</p>

性能

形式	Liquid
存放说明	Shipped at 4°C. Store at +4°C short term (1-2 weeks). Upon delivery aliquot. Store at -20°C or -80°C. Avoid freeze / thaw cycle.

存储溶液	<p>pH: 7.40</p> <p>Preservative: 0.02% Sodium azide</p> <p>Constituent: PBS</p> <p>Batches of this product that have a concentration &lt; 1mg/ml may have BSA added as a stabilising agent. If you would like information about the formulation of a specific lot, please contact our scientific support team who will be happy to help.</p>
纯度	Immunogen affinity purified
克隆	多克隆
同种型	IgG

应用

The Abpromise guarantee

Abpromise™承诺保证使用ab31707于以下的经测试应用

“应用说明”部分 下显示的仅为推荐的起始稀释度;实际最佳的稀释度/浓度应由使用者检定。

应用	Ab评论	说明
ICC/IF	★★★★★ (1)	Use a concentration of 1 µg/ml.
WB	★★★★★★ (2)	Use a concentration of 1 µg/ml. Detects a band of approximately 30 kDa (predicted molecular weight: 26 kDa).

靶标

功能

Galactose-specific lectin which binds IgE. May mediate with the alpha-3, beta-1 integrin the stimulation by CSPG4 of endothelial cells migration. Together with DMBT1, required for terminal differentiation of columnar epithelial cells during early embryogenesis.

组织特异性

A major expression is found in the colonic epithelium. It is also abundant in the activated macrophages.

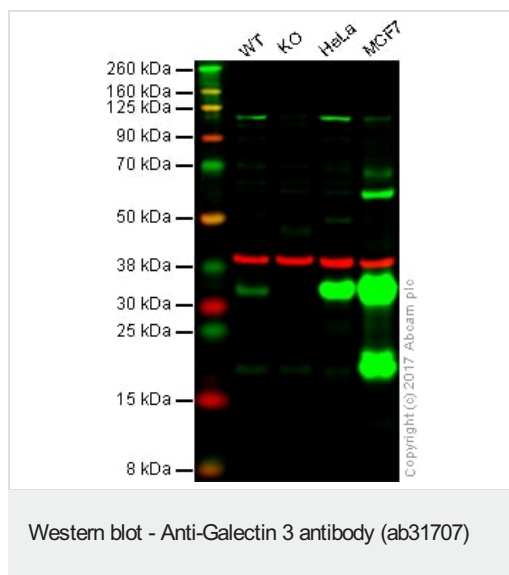
序列相似性

Contains 1 galectin domain.

细胞定位

Nucleus. Cytoplasmic in adenomas and carcinomas. May be secreted by a non-classical secretory pathway and associate with the cell surface.

图片	
----	--



**Lane 1:** Wild-type HAP1 whole cell lysate (20 µg)

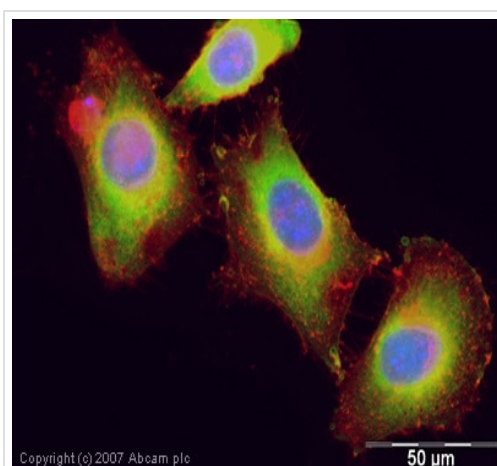
**Lane 2:** Galectin 3 knockout HAP1 whole cell lysate (20 µg)

**Lane 3:** HeLa whole cell lysate (20 µg)

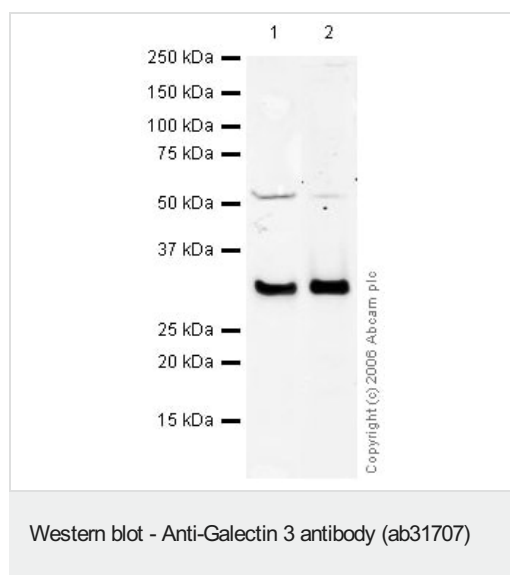
**Lane 4:** MCF7 whole cell lysate (20 µg)

**Lanes 1 - 4:** Merged signal (red and green). Green - ab31707 observed at 32 kDa. Red - loading control, **ab8245**, observed at 37 kDa.

ab31707 was shown to specifically recognize Galectin 3 in wild-type HAP1 cells along with additional cross-reactive bands. No band was observed when Galectin 3 knockout samples were examined. Wild-type and Galectin 3 knockout samples were subjected to SDS-PAGE. Ab31707 and **ab8245** (Mouse anti GAPDH loading control) were incubated overnight at 4°C at 1 µg/ml and 1/10000 dilution respectively. Blots were developed with Goat anti-Rabbit IgG H&L (IRDye® 800CW) preabsorbed **ab216773** and Goat anti-Mouse IgG H&L (IRDye® 680RD) preabsorbed **ab216776** secondary antibodies at 1/20000 dilution for 1 hour at room temperature before imaging.



ICC/IF image of ab31707 stained human HeLa cells. The cells were PFA fixed (10 min), permeabilised in TBS-T (20 min) and incubated with the antibody (ab31707, 1 µg/ml) for 1h at room temperature. 1%BSA / 10% normal goat serum / 0.3M glycine was used to quench autofluorescence and block non-specific protein-protein interactions. The secondary antibody (green) was Alexa Fluor® 488 goat anti-rabbit IgG (H+L) used at a 1/1000 dilution for 1h. Alexa Fluor® 594 WGA was used to label plasma membranes (red). DAPI was used to stain the cell nuclei (blue).



**All lanes :** Anti-Galectin 3 antibody (ab31707) at 1 µg/ml

**Lane 1 :** HeLa (Human epithelial carcinoma cell line) Whole Cell Lysate

**Lane 2 :** HeLa (Human epithelial carcinoma cell line) Nuclear Lysate

Lysates/proteins at 20 µg per lane.

### Secondary

**All lanes :** IRDye 680 Conjugated Goat Anti Rabbit IgG (H&L) at 1/15000 dilution

Performed under reducing conditions.

**Predicted band size:** 26 kDa

**Observed band size:** 30 kDa

We also see a very faint band at 52 kDa in the HeLa Whole cell lysate, we are uncertain as to the identity of this band.

**Please note:** All products are "FOR RESEARCH USE ONLY. NOT FOR USE IN DIAGNOSTIC PROCEDURES"

### Our Abpromise to you: Quality guaranteed and expert technical support

- Replacement or refund for products not performing as stated on the datasheet
- Valid for 12 months from date of delivery
- Response to your inquiry within 24 hours
- We provide support in Chinese, English, French, German, Japanese and Spanish
- Extensive multi-media technical resources to help you
- We investigate all quality concerns to ensure our products perform to the highest standards

If the product does not perform as described on this datasheet, we will offer a refund or replacement. For full details of the Abpromise, please visit <https://www.abcam.cn/abpromise> or contact our technical team.

### Terms and conditions

- Guarantee only valid for products bought direct from Abcam or one of our authorized distributors