

Anti-Galectin 1 antibody ab112525

6 图像

概述

产品名称	Anti-Galectin 1 抗体
描述	兔多克隆抗体 to Galectin 1
宿主	Rabbit
经测试应用	适用于: ICC, IHC-Fr, WB, IHC-P
种属反应性	与反应: Human 预测可用于: Mouse, Rat 
免疫原	A synthetic peptide corresponding to a sequence at the C-terminal of Human Galectin 1.
阳性对照	IHC-P: Human gastric and ovarian cancer tissue, human tonsil tissue IHC-Fr: Human tonsil tissue ICC: U20s cells WB: Hela, MCF-7, COLO-320, A549, 22RV1 and A375 whole cell lysates,
常规说明	<p>The Life Science industry has been in the grips of a reproducibility crisis for a number of years. Abcam is leading the way in addressing this with our range of recombinant monoclonal antibodies and knockout edited cell lines for gold-standard validation. Please check that this product meets your needs before purchasing.</p> <p>If you have any questions, special requirements or concerns, please send us an inquiry and/or contact our Support team ahead of purchase. Recommended alternatives for this product can be found below, along with publications, customer reviews and Q&As</p>

性能

形式	Liquid
存放说明	Shipped at 4°C. Store at +4°C short term (1-2 weeks). Upon delivery aliquot. Store at -20°C long term.
存储溶液	Preservatives: 0.025% Thimerosal (merthiolate), 0.025% Sodium azide Constituents: 2.5% BSA, 0.45% Sodium chloride, 0.1% Dibasic monohydrogen sodium phosphate
纯度	Protein A purified
克隆	多克隆
同种型	IgG

应用

The Abpromise guarantee**Abpromise™** 承诺保证使用ab112525于以下的经测试应用

“应用说明”部分 下显示的仅为推荐的起始稀释度;实际最佳的稀释度/浓度应由使用者检定。

应用	Ab评论	说明
ICC		Use a concentration of 2 µg/ml.
IHC-Fr		Use a concentration of 0.5 - 1 µg/ml.
WB		Use a concentration of 0.5 - 1 µg/ml. Predicted molecular weight: 15 kDa. The detection limit for Galectin 1 is approximately 2.5ng/lane under non-reducing and reducing conditions.
IHC-P		Use a concentration of 1 µg/ml. Perform heat mediated antigen retrieval before commencing with IHC staining protocol.

靶标**功能**

May regulate apoptosis, cell proliferation and cell differentiation. Binds beta-galactoside and a wide array of complex carbohydrates. Inhibits CD45 protein phosphatase activity and therefore the dephosphorylation of Lyn kinase.

组织特异性

Expressed in placenta, maternal decidua and fetal membranes. Within placenta, expressed in trophoblasts, stromal cells, villous endothelium, syncytiotrophoblast apical membrane and villous stroma. Within fetal membranes, expressed in amnion, chorioamniotic mesenchyma and chorion (at protein level). Expressed in cardiac, smooth, and skeletal muscle, neurons, thymus, kidney and hematopoietic cells.

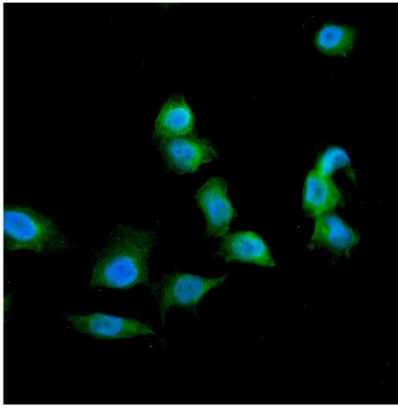
序列相似性

Contains 1 galectin domain.

细胞定位

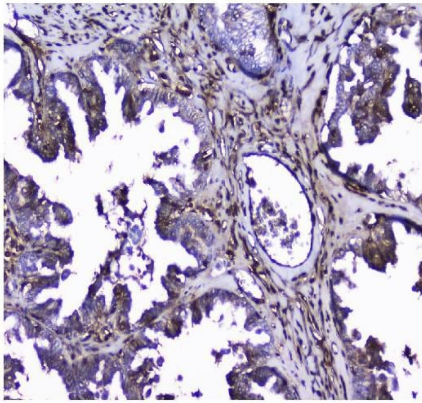
Secreted > extracellular space > extracellular matrix.

图片



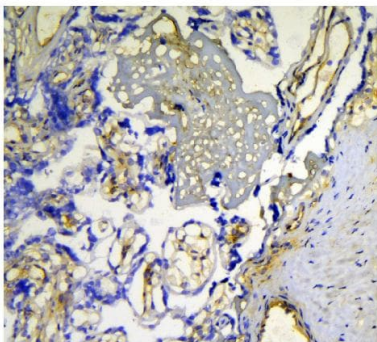
Immunocytochemistry - Anti-Galectin 1 antibody
(ab112525)

ab112525 staining Galectin 1 in U2OS tissue by Immunohistochemistry. Enzyme antigen retrieval was performed using IHC enzyme antigen retrieval reagent (AR0022) for 15 mins. DyLight®488 Conjugated Goat Anti-Rabbit IgG was used as secondary antibody at 1:100 dilution and incubated for 30 minutes at 37°C. The section was counterstained with DAPI.



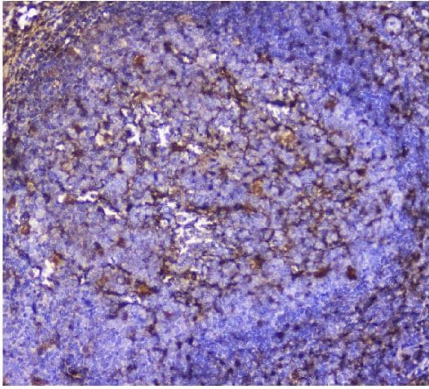
Immunohistochemistry (Formalin/PFA-fixed paraffin-embedded sections) - Anti-Galectin 1 antibody
(ab112525)

ab112525 staining Galectin 1 in intestinal cancer tissue by Immunohistochemistry (Formalin/PFA-fixed paraffin-embedded sections).



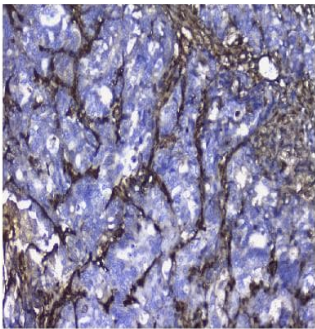
Immunohistochemistry (Frozen sections) - Anti-Galectin 1 antibody (ab112525)

ab112525 (1 µg/mL) staining Galectin 1 in placenta tissue by Immunohistochemistry (Frozen sections)



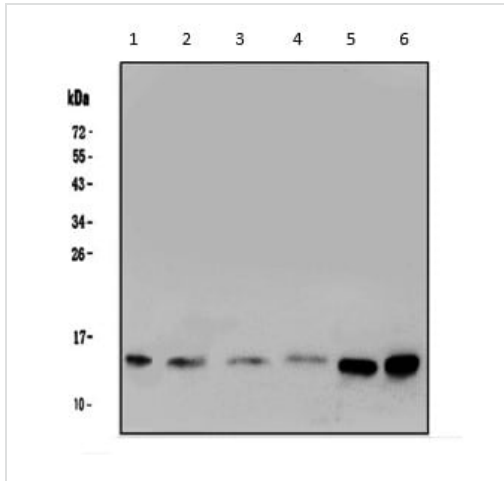
ab112525 staining Galectin 1 in tonsil tissue by Immunohistochemistry (Formalin/PFA-fixed paraffin-embedded sections).

Immunohistochemistry (Formalin/PFA-fixed paraffin-embedded sections) - Anti-Galectin 1 antibody (ab112525)



ab112525 staining Galectin 1 in gastric cancer tissue by Immunohistochemistry (Formalin/PFA-fixed paraffin-embedded sections).

Immunohistochemistry (Formalin/PFA-fixed paraffin-embedded sections) - Anti-Galectin 1 antibody (ab112525)



Western blot - Anti-Galectin 1 antibody (ab112525)

All lanes : Anti-Galectin 1 antibody (ab112525) at 0.5 µg/ml

Lane 1 : Hela whole cell lysates

Lane 2 : MCF-7 whole cell lysates

Lane 3 : COLO-320 whole cell lysates

Lane 4 : A549 whole cell lysates

Lane 5 : 22RV1 whole cell lysates

Lane 6 : A375 whole cell lysates

Lysates/proteins at 50 µg per lane.

Predicted band size: 15 kDa

Please note: All products are "FOR RESEARCH USE ONLY. NOT FOR USE IN DIAGNOSTIC PROCEDURES"

Our Abpromise to you: Quality guaranteed and expert technical support

- Replacement or refund for products not performing as stated on the datasheet
- Valid for 12 months from date of delivery
- Response to your inquiry within 24 hours
- We provide support in Chinese, English, French, German, Japanese and Spanish
- Extensive multi-media technical resources to help you
- We investigate all quality concerns to ensure our products perform to the highest standards

If the product does not perform as described on this datasheet, we will offer a refund or replacement. For full details of the Abpromise, please visit <https://www.abcam.cn/abpromise> or contact our technical team.

Terms and conditions

- Guarantee only valid for products bought direct from Abcam or one of our authorized distributors