

Anti-GAD65 + GAD67 antibody ab49832

★★★★★ [6 Abreviews](#) [29 References](#) [2 图像](#)

概述

产品名称	Anti-GAD65 + GAD67抗体
描述	兔多克隆抗体to GAD65 + GAD67
宿主	Rabbit
经测试应用	适用于: IHC-P
种属反应性	与反应: Rat
免疫原	Synthetic peptide: K-DIDFLIEEIERLGQDL conjugated to KLH by a Glutaraldehyde linker, corresponding to C terminal amino acids 579-594 (with N-terminally added lysine) of Human GAD67. The sequence is identical in Human GAD 65 (amino acids 570-585).

 [Run BLAST with](#)

 [Run BLAST with](#)

常规说明

The Life Science industry has been in the grips of a reproducibility crisis for a number of years. Abcam is leading the way in addressing this with our range of recombinant monoclonal antibodies and knockout edited cell lines for gold-standard validation. Please check that this product meets your needs before purchasing.

If you have any questions, special requirements or concerns, please send us an inquiry and/or contact our Support team ahead of purchase. Recommended alternatives for this product can be found below, along with publications, customer reviews and Q&As

性能

形式	Liquid
存放说明	Shipped at 4°C. Store at +4°C short term (1-2 weeks). Upon delivery aliquot. Store at -20°C long term.
存储溶液	pH: 7.40 Preservative: 0.097% Sodium azide Constituent: 0.0268% PBS
纯度	Ion Exchange Chromatography
纯化说明	Whole antiserum is fractionated and then further purified by ion-exchange chromatography to provide the IgG fraction of antiserum that is essentially free of other Rabbit serum proteins.
克隆	多克隆

同种型

lgG

应用

The Abpromise guarantee

Abpromise™承诺保证使用ab49832于以下的经测试应用

“应用说明”部分 下显示的仅为推荐的起始稀释度;实际最佳的稀释度/浓度应由使用者检定。

应用	Ab评论	说明
IHC-P	★★★★★ (2)	1/1000 - 1/2000.

靶标

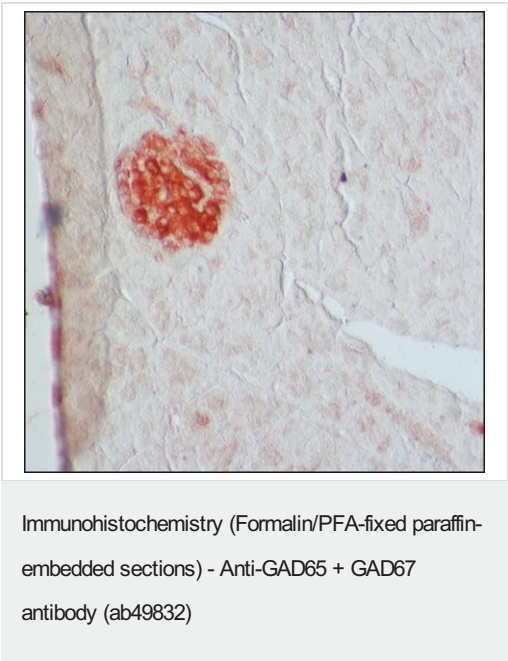
相关性

This gene encodes one of several forms of glutamic acid decarboxylase, identified as a major autoantigen in insulin-dependent diabetes. The enzyme encoded is responsible for catalyzing the production of gamma aminobutyric acid from L glutamic acid. A pathogenic role for this enzyme has been identified in the human pancreas since it has been identified as an autoantibody and an autoreactive T cell target in insulin dependent diabetes. This gene may also play a role in the stiff man syndrome.

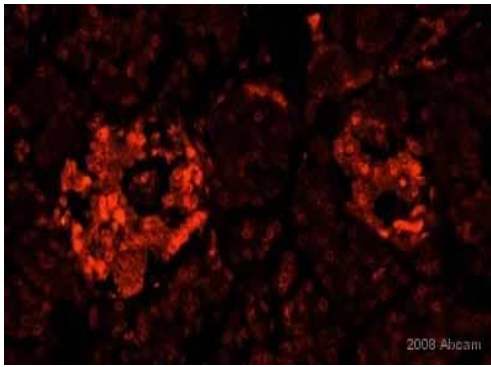
细胞定位

Cytoplasm; cytosol. Associated to cytoplasmic vesicles. In neurons, cytosolic leaflet of Golgi membranes and presynaptic clusters.

图片



Immunohistochemical analysis of formalin-fixed, paraffin-embedded Rat pancreatic sections labelling GAD65 & GAD67 with ab49832 at a concentration of 1/1000. The secondary used was a biotin peroxidase.



Immunohistochemistry (Formalin/PFA-fixed paraffin-embedded sections) - Anti-GAD65 + GAD67 antibody (ab49832)

This image is courtesy of an anonymous Abreview

ab49832 staining human pancreas tissue sections by IHC-P. Sections were formaldehyde fixed and subjected to heat mediated antigen retrieval in 10mM citrate buffer prior to incubation with ab49832, diluted 1/2000, for 1 hour at 25°C. An Alexa Fluor® 546 conjugated goat anti-rabbit antibody, diluted 1/200, was used as the secondary.

Please note: All products are "FOR RESEARCH USE ONLY. NOT FOR USE IN DIAGNOSTIC PROCEDURES"

Our Abpromise to you: Quality guaranteed and expert technical support

- Replacement or refund for products not performing as stated on the datasheet
- Valid for 12 months from date of delivery
- Response to your inquiry within 24 hours
- We provide support in Chinese, English, French, German, Japanese and Spanish
- Extensive multi-media technical resources to help you
- We investigate all quality concerns to ensure our products perform to the highest standards

If the product does not perform as described on this datasheet, we will offer a refund or replacement. For full details of the Abpromise, please visit <https://www.abcam.cn/abpromise> or contact our technical team.

Terms and conditions

- Guarantee only valid for products bought direct from Abcam or one of our authorized distributors