


### Anti-GABARAPL2/GATE-16 antibody [EP4808] ab126607

敲除验证
重组
RabMAb

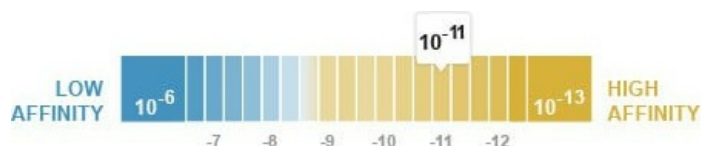
★★★★★
[4 Abreviews](#)
[5 References](#)
[4 图像](#)

#### 概述

<b>产品名称</b>	Anti-GABARAPL2/GATE-16抗体[EP4808]
<b>描述</b>	兔单克隆抗体[EP4808] to GABARAPL2/GATE-16
<b>宿主</b>	Rabbit
<b>经测试应用</b>	<b>适用于:</b> WB <b>不适用于:</b> Flow Cyt, ICC/IF, IHC-P or IP
<b>种属反应性</b>	<b>与反应:</b> Human <b>预测可用于:</b> Mouse, Rat 
<b>免疫原</b>	Synthetic peptide within Human GABARAPL2/GATE-16 aa 50-150. The exact sequence is proprietary.
<b>阳性对照</b>	HeLa, Human fetal brain, Human heart and Human spleen lysates.
<b>常规说明</b>	This product is a recombinant monoclonal antibody, which offers several advantages including: <ul style="list-style-type: none"> <li>- High batch-to-batch consistency and reproducibility</li> <li>- Improved sensitivity and specificity</li> <li>- Long-term security of supply</li> <li>- Animal-free production</li> </ul> For more information <a href="#">see here</a> . Our RabMAb <sup>®</sup> technology is a patented hybridoma-based technology for making rabbit monoclonal antibodies. For details on our patents, please refer to <a href="#">RabMAb<sup>®</sup> patents</a> .

#### 性能

<b>形式</b>	Liquid
<b>存放说明</b>	Shipped at 4°C. Store at +4°C short term (1-2 weeks). Upon delivery aliquot. Store at -20°C. Stable for 12 months at -20°C.
<b>解离常数 (K<sub>D</sub>)</b>	K <sub>D</sub> = 6.50 x 10 <sup>-11</sup> M



## [Learn more about K<sub>D</sub>](#)

存储溶液	pH: 7.20 Preservative: 0.01% Sodium azide Constituents: 0.05% BSA, 40% Glycerol (glycerin, glycerine), 59% PBS
纯度	Protein A purified
克隆	单克隆
克隆编号	EP4808
同种型	IgG

## 应用

**The Abpromise guarantee**      **Abpromise™**承诺保证使用ab126607于以下的经测试应用

“应用说明”部分下显示的仅为推荐的起始稀释度;实际最佳的稀释度/浓度应由使用者检定。

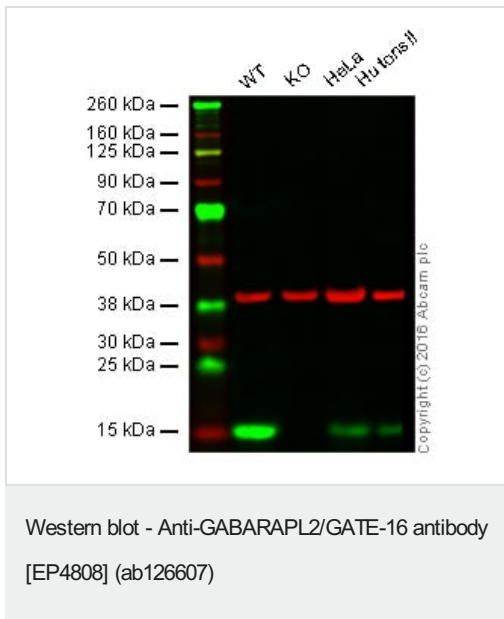
应用	Ab评论	说明
WB	★★★★★ (4)	1/1000 - 1/10000. Detects a band of approximately 14 kDa (predicted molecular weight: 14 kDa).

应用说明      Is unsuitable for Flow Cyt, ICC/IF, IHC-P or IP.

## 靶标

功能	Involved in intra-Golgi traffic. Modulates intra-Golgi transport through coupling between NSF activity and SNAREs activation. It first stimulates the ATPase activity of NSF which in turn stimulates the association with GOSR1.
组织特异性	Ubiquitous. Expressed at high levels in the brain, heart, prostate, ovary, spleen and skeletal muscle. Expressed at very low levels in lung, thymus and small intestine.
序列相似性	Belongs to the MAP1 LC3 family.
翻译后修饰	Phosphorylated upon DNA damage, probably by ATM or ATR.
细胞定位	Golgi apparatus.

## 图片



**Lane 1:** Wild-type HAP1 cell lysate (20 µg)

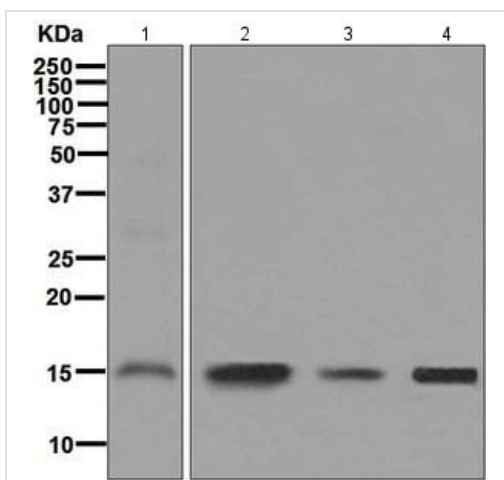
**Lane 2:** GABARAPL2 / GATE-16 knockout HAP1 cell lysate (20 µg)

**Lane 3:** HeLa cell lysate (20 µg)

**Lane 4:** Human tonsil lysate (20 µg)

**Lanes 1 - 4:** Merged signal (red and green). Green - ab126607 observed at 15 kDa. Red - loading control, **ab8245**, observed at 37 kDa.

ab126607 was shown to specifically react with GABARAPL2 / GATE-16 when GABARAPL2 / GATE-16 knockout samples were used. Wild-type and GABARAPL2 / GATE-16 knockout samples were subjected to SDS-PAGE. ab126607 and **ab8245** (loading control to GAPDH) were diluted 1/1000 and 1/10 000 respectively and incubated overnight at 4°C. Blots were developed with Goat anti-Rabbit IgG H&L (IRDye® 800CW) preadsorbed (**ab216773**) and Goat anti-Mouse IgG H&L (IRDye® 680RD) preadsorbed (**ab216776**) secondary antibodies at 1/10 000 dilution for 1 h at room temperature before imaging.



**All lanes :** Anti-GABARAPL2/GATE-16 antibody [EP4808] (ab126607) at 1/1000 dilution

**Lane 1 :** Human fetal brain tissue lysate

**Lane 2 :** Human heart tissue lysate

**Lane 3 :** HeLa cell lysate

**Lane 4 :** Human spleen tissue lysate

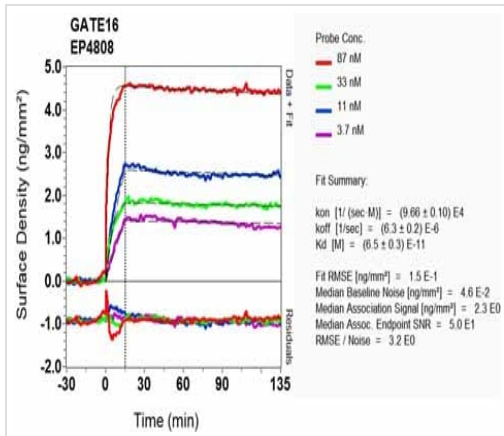
Lysates/proteins at 10 µg per lane.

### Secondary

**All lanes :** Goat anti-Rabbit HRP at 1/2000 dilution

**Predicted band size:** 14 kDa

**Observed band size:** 14 kDa



OI-RD Scanning - Anti-GABARAPL2/GATE-16 antibody [EP4808] (ab126607)

Equilibrium dissociation constant ( $K_D$ )

Learn more about  $K_D$

[Click here to learn more about  \$K\_D\$](#)

Why choose a recombinant antibody?

**Research with confidence**  
Consistent and reproducible results

**Long-term and scalable supply**  
Recombinant technology

**Success from the first experiment**  
Confirmed specificity

**Ethical standards compliant**  
Animal-free production

Anti-GABARAPL2/GATE-16 antibody [EP4808] (ab126607)

**Please note:** All products are "FOR RESEARCH USE ONLY. NOT FOR USE IN DIAGNOSTIC PROCEDURES"

### Our Abpromise to you: Quality guaranteed and expert technical support

- Replacement or refund for products not performing as stated on the datasheet
- Valid for 12 months from date of delivery
- Response to your inquiry within 24 hours
- We provide support in Chinese, English, French, German, Japanese and Spanish
- Extensive multi-media technical resources to help you
- We investigate all quality concerns to ensure our products perform to the highest standards

If the product does not perform as described on this datasheet, we will offer a refund or replacement. For full details of the Abpromise, please visit <https://www.abcam.cn/abpromise> or contact our technical team.

## Terms and conditions

---

- Guarantee only valid for products bought direct from Abcam or one of our authorized distributors