


Anti-GABA Transporter 1 / GAT 1 antibody ab426

★★★★★ [3 Abreviews](#) [36 References](#) [1 图像](#)

概述

产品名称	Anti-GABA Transporter 1 / GAT 1抗体
描述	兔多克隆抗体to GABA Transporter 1 / GAT 1
宿主	Rabbit
特异性	Reacts specifically with a 72 kDa protein.
经测试应用	适用于: WB
种属反应性	与反应: Rat 预测可用于: Human 
免疫原	Synthetic peptide corresponding to Rat GABA Transporter 1/ GAT 1 (C terminal). 20 amino acids. Database link: P23978
阳性对照	WB: Rat Hippocampus Tissue Lysate; Rat Spinal Cord Tissue Lysate; Rat Brain Tissue Lysate.
常规说明	<p>The Life Science industry has been in the grips of a reproducibility crisis for a number of years. Abcam is leading the way in addressing this with our range of recombinant monoclonal antibodies and knockout edited cell lines for gold-standard validation. Please check that this product meets your needs before purchasing.</p> <p>If you have any questions, special requirements or concerns, please send us an inquiry and/or contact our Support team ahead of purchase. Recommended alternatives for this product can be found below, along with publications, customer reviews and Q&As</p>

性能

形式	Liquid
存放说明	Shipped at 4°C. Store at +4°C short term (1-2 weeks). Upon delivery aliquot. Store at -20°C or -80°C. Avoid freeze / thaw cycle.
存储溶液	Constituent: Whole serum
纯度	Whole antiserum
克隆	多克隆
同种型	IgG

The Abpromise guarantee **Abpromise™**承诺保证使用ab426于以下的经测试应用

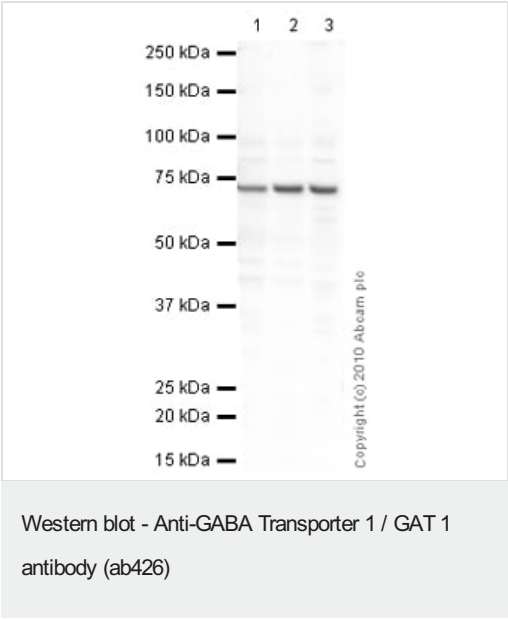
“应用说明”部分 下显示的仅为推荐的起始稀释度;实际最佳的稀释度/浓度应由使用者检定。

应用	Ab评论	说明
WB	★★★★★ (1)	1/500. Detects a band of approximately 74 kDa (predicted molecular weight: 67 kDa).

靶标

功能	Terminates the action of GABA by its high affinity sodium-dependent reuptake into presynaptic terminals.
序列相似性	Belongs to the sodium:neurotransmitter symporter (SNF) (TC 2.A.22) family. SLC6A1 subfamily.
结构域	The PDZ domain-binding motif is involved in the interaction with MPP5.
细胞定位	Cell membrane. Membrane. Localized at the plasma membrane and in a subset of intracellular vesicles. Localized at the presynaptic terminals of interneurons.

图片



All lanes : Anti-GABA Transporter 1 / GAT 1 antibody (ab426) at 1 µg/ml

- Lane 1 :** Rat Hippocampus Tissue Lysate
- Lane 2 :** Spinal Cord (Rat) Tissue Lysate
- Lane 3 :** Brain (Rat) Tissue Lysate

Lysates/proteins at 10 µg per lane.

Secondary

All lanes : Goat polyclonal Secondary Antibody to Rabbit IgG - H&L (HRP), pre-adsorbed at 1/3000 dilution

Developed using the ECL technique.

Performed under reducing conditions.

Predicted band size: 67 kDa
Observed band size: 74 kDa

Exposure time: 30 seconds

GABA Transporter 1/ GAT 1 contains a number of potential glycosylation sites (SwissProt) which may explain its migration at a higher molecular weight than predicted.

Please note: All products are "FOR RESEARCH USE ONLY. NOT FOR USE IN DIAGNOSTIC PROCEDURES"

Our Abpromise to you: Quality guaranteed and expert technical support

- Replacement or refund for products not performing as stated on the datasheet
- Valid for 12 months from date of delivery
- Response to your inquiry within 24 hours
- We provide support in Chinese, English, French, German, Japanese and Spanish
- Extensive multi-media technical resources to help you
- We investigate all quality concerns to ensure our products perform to the highest standards

If the product does not perform as described on this datasheet, we will offer a refund or replacement. For full details of the Abpromise, please visit <https://www.abcam.cn/abpromise> or contact our technical team.

Terms and conditions

- Guarantee only valid for products bought direct from Abcam or one of our authorized distributors