


# Anti-GABA B Receptor 2/GABBR2 (phospho S893) antibody [EP2318Y] ab68426

RabMAb

## 1 References 2 图像

### 概述

产品名称	Anti-GABA B Receptor 2/GABBR2 (phospho S893)抗体[EP2318Y]
描述	兔单克隆抗体[EP2318Y] to GABA B Receptor 2/GABBR2 (phospho S893)
宿主	Rabbit
经测试应用	适用于: WB, IHC-P 不适用于: Flow Cyt or IP
种属反应性	与反应: Human 预测可用于: Mouse, Rat 
免疫原	Synthetic peptide. This information is proprietary to Abcam and/or its suppliers.
阳性对照	WB: Human brain tissue. IHC-P: Human brain tissue.
常规说明	Our RabMAb <sup>®</sup> technology is a patented hybridoma-based technology for making rabbit monoclonal antibodies. For details on our patents, please refer to <a href="#">RabMAb<sup>®</sup> patents</a> .  The Life Science industry has been in the grips of a reproducibility crisis for a number of years. Abcam is leading the way in addressing this with our range of recombinant monoclonal antibodies and knockout edited cell lines for gold-standard validation. Please check that this product meets your needs before purchasing.  If you have any questions, special requirements or concerns, please send us an inquiry and/or contact our Support team ahead of purchase. Recommended alternatives for this product can be found below, along with publications, customer reviews and Q&As

### 性能

形式	Liquid
存放说明	Shipped at 4°C. Store at -20°C. Stable for 12 months at -20°C.
存储溶液	pH: 7.20 Preservative: 0.05% Sodium azide Constituents: 0.1% BSA, 40% Glycerol (glycerin, glycerine), 9.85% Tris glycine, 50% Tissue culture supernatant
纯度	Tissue culture supernatant

克隆	单克隆
克隆编号	EP2318Y
同种型	IgG

## 应用

## The Abpromise guarantee Abpromise™承诺保证使用ab68426于以下的经测试应用

**“应用说明”部分 下显示的仅为推荐的起始稀释度;实际最佳的稀释度/浓度应由使用者检定。**

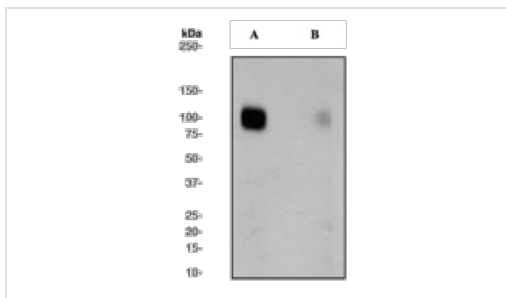
应用	Ab评论	说明
WB		1/500 - 1/1000. Detects a band of approximately 105 kDa.
IHC-P		1/100 - 1/250. Perform heat mediated antigen retrieval before commencing with IHC staining protocol. The use of an HRP/AP polymerized secondary antibody is recommended.

**应用说明** Is unsuitable for Flow Cyt or IP.

靶标

<b>功能</b>	Receptor for GABA. The activity of this receptor is mediated by G-proteins that inhibit adenylyl cyclase activity, stimulates phospholipase A2, activates potassium channels, inactivates voltage-dependent calcium-channels and modulates inositol phospholipids hydrolysis. Plays a critical role in the fine-tuning of inhibitory synaptic transmission. Pre-synaptic GABA-B-R inhibit neurotransmitter release by down-regulating high-voltage activated calcium channels, whereas postsynaptic GABA-B-R decrease neuronal excitability by activating a prominent inwardly rectifying potassium (Kir) conductance that underlies the late inhibitory postsynaptic potentials. Not only implicated in synaptic inhibition but also in hippocampal long-term potentiation, slow wave sleep, muscle relaxation and antinociception.
<b>组织特异性</b>	Highly expressed in brain, especially in cerebral cortex, thalamus, hippocampus, frontal, occipital and temporal lobe, occipital pole and cerebellum, followed by corpus callosum, caudate nucleus, spinal cord, amygdala and medulla. Weakly expressed in heart, testis and skeletal muscle.
<b>序列相似性</b>	Belongs to the G-protein coupled receptor 3 family. GABA-B receptor subfamily.
<b>结构域</b>	Alpha-helical parts of the C-terminal intracellular region mediate heterodimeric interaction with GABA-B receptor 1.
<b>细胞定位</b>	Cell membrane. Cell junction > synapse > postsynaptic cell membrane. Moreover coexpression of GABA-B-R1 and GABA-B-R2 appears to be a prerequisite for maturation and transport of GABA-B-R1 to the plasma membrane.

图片



Western blot - Anti-GABA B Receptor 2/GABBR2 (phospho S893) antibody [EP2318Y] (ab68426)

**All lanes :** Anti-GABA B Receptor 2/GABBR2 (phospho S893) antibody [EP2318Y] (ab68426) at 1/1000 dilution

**Lane 1 :** Human brain lysate - untreated

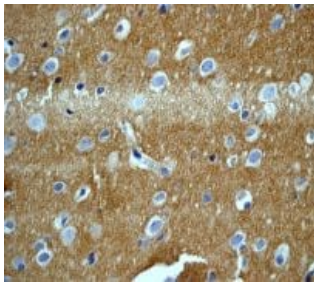
**Lane 2 :** Human brain lysate - treated with AP

Lysates/proteins at 10 µg per lane.

### Secondary

**All lanes :** HRP labelled Goat anti-Rabbit antibody at 1/2000 dilution

**Observed band size:** 106 kDa



Immunohistochemistry (Formalin/PFA-fixed paraffin-embedded sections) - Anti-GABA B Receptor 2/GABBR2 (phospho S893) antibody [EP2318Y] (ab68426)

Immunohistochemical analysis of phosphorylated GABA B Receptor 2/GABBR2 expression on paraffin-embedded Human brain tissue using ab68426 at 1/100 dilution. Heat mediated antigen retrieval was performed, and an HRP-conjugated polymerized secondary antibody was used.

**Please note:** All products are "FOR RESEARCH USE ONLY. NOT FOR USE IN DIAGNOSTIC PROCEDURES"

### Our Abpromise to you: Quality guaranteed and expert technical support

- Replacement or refund for products not performing as stated on the datasheet
- Valid for 12 months from date of delivery
- Response to your inquiry within 24 hours
- We provide support in Chinese, English, French, German, Japanese and Spanish
- Extensive multi-media technical resources to help you
- We investigate all quality concerns to ensure our products perform to the highest standards

If the product does not perform as described on this datasheet, we will offer a refund or replacement. For full details of the Abpromise, please visit <https://www.abcam.cn/abpromise> or contact our technical team.

## Terms and conditions

---

- Guarantee only valid for products bought direct from Abcam or one of our authorized distributors