

Anti-GAB1 (phospho Y627) antibody ab131458

2 图像

概述

产品名称	Anti-GAB1 (phospho Y627)抗体
描述	兔多克隆抗体to GAB1 (phospho Y627)
宿主	Rabbit
经测试应用	适用于: WB, ICC/IF
种属反应性	与反应: Human
免疫原	Synthetic peptide corresponding to Human GAB1 (phospho Y627). Database link: Q13480
	 Run BLAST with  Run BLAST with
阳性对照	Methanol fixed HeLa cells; HUVEC cell extracts EGF treated.
常规说明	<p>The Life Science industry has been in the grips of a reproducibility crisis for a number of years. Abcam is leading the way in addressing this with our range of recombinant monoclonal antibodies and knockout edited cell lines for gold-standard validation. Please check that this product meets your needs before purchasing.</p> <p>If you have any questions, special requirements or concerns, please send us an inquiry and/or contact our Support team ahead of purchase. Recommended alternatives for this product can be found below, along with publications, customer reviews and Q&As</p>

性能

形式	Liquid
存放说明	Shipped at 4°C. Store at -20°C. Stable for 12 months at -20°C.
存储溶液	pH: 7.40 Preservative: 0.02% Sodium azide Constituents: 49% PBS, 50% Glycerol (glycerin, glycerine), 0.88% Sodium chloride
	PBS without Mg2+ and Ca2+
纯度	Immunogen affinity purified
纯化说明	Antibodies were purified by using epitope specific phospho peptide. Non-phospho specific antibodies were removed by chromatography using non-phospho peptide.
克隆	多克隆
同种型	IgG

应用

The Abpromise guarantee **Abpromise™**承诺保证使用ab131458于以下的经测试应用

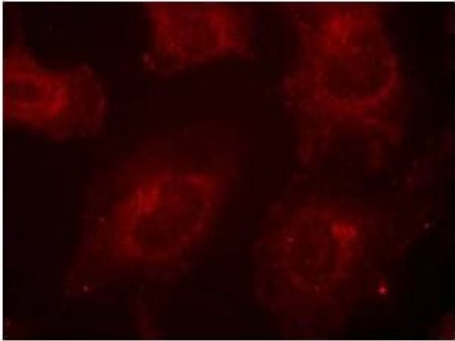
“应用说明”部分 下显示的仅为推荐的起始稀释度;实际最佳的稀释度/浓度应由使用者检定。

应用	Ab评论	说明
WB		1/500 - 1/1000. Predicted molecular weight: 77 kDa.
ICC/IF		1/100 - 1/200.

靶标

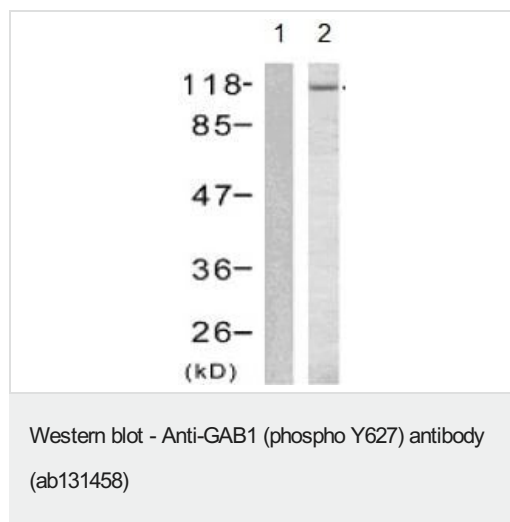
功能	Probably involved in EGF and insulin receptor signaling.
序列相似性	Belongs to the GAB family. Contains 1 PH domain.
翻译后修饰	Phosphorylated on tyrosine residue(s) by the epidermal growth factor receptor (EGFR) and the insulin receptor (INSR). Tyrosine phosphorylation of GAB1 mediates interaction with several proteins that contain SH2 domains.

图片



Immunocytochemistry/ Immunofluorescence - Anti-GAB1 (phospho Y627) antibody (ab131458)

Immunofluorescence staining of methanol fixed HeLa cells labelling GAB1 (phospho Y627) with ab131458 antibody at a dilution of 1/100.



All lanes : Anti-GAB1 (phospho Y627) antibody (ab131458) at 1/500 dilution

Lane 1 : HUVEC cell extracts untreated

Lane 2 : HUVEC cell extracts EGF treated

Predicted band size: 77 kDa

Please note: All products are "FOR RESEARCH USE ONLY. NOT FOR USE IN DIAGNOSTIC PROCEDURES"

Our Abpromise to you: Quality guaranteed and expert technical support

- Replacement or refund for products not performing as stated on the datasheet
- Valid for 12 months from date of delivery
- Response to your inquiry within 24 hours
- We provide support in Chinese, English, French, German, Japanese and Spanish
- Extensive multi-media technical resources to help you
- We investigate all quality concerns to ensure our products perform to the highest standards

If the product does not perform as described on this datasheet, we will offer a refund or replacement. For full details of the Abpromise, please visit <https://www.abcam.cn/abpromise> or contact our technical team.

Terms and conditions

- Guarantee only valid for products bought direct from Abcam or one of our authorized distributors