


Anti-GAB1 antibody ab59362

[6 References](#) [3 图像](#)

概述

产品名称	Anti-GAB1抗体
描述	兔多克隆抗体to GAB1
宿主	Rabbit
经测试应用	适用于: ICC/IF, WB, IHC-P
种属反应性	与反应: Mouse, Human 预测可用于: Rat 
免疫原	Synthesized non phosphopeptide derived from human GAB1 around the phosphorylation site of tyrosine 659 (VDY ^P VV).
常规说明	<p>The Life Science industry has been in the grips of a reproducibility crisis for a number of years. Abcam is leading the way in addressing this with our range of recombinant monoclonal antibodies and knockout edited cell lines for gold-standard validation. Please check that this product meets your needs before purchasing.</p> <p>If you have any questions, special requirements or concerns, please send us an inquiry and/or contact our Support team ahead of purchase. Recommended alternatives for this product can be found below, along with publications, customer reviews and Q&As</p>

性能

形式	Liquid
存放说明	Shipped at 4°C. Upon delivery aliquot and store at -20°C. Avoid freeze / thaw cycles.
存储溶液	pH: 7.40 Preservative: 0.02% Sodium azide Constituents: PBS, 50% Glycerol, 0.87% Sodium chloride
纯度	Without Mg+2 and Ca+2 Immunogen affinity purified
纯化说明	Purified from rabbit antiserum by affinity chromatography, using epitope specific immunogen.
克隆	多克隆
同种型	IgG

应用

The Abpromise guarantee **Abpromise™**承诺保证使用ab59362于以下的经测试应用

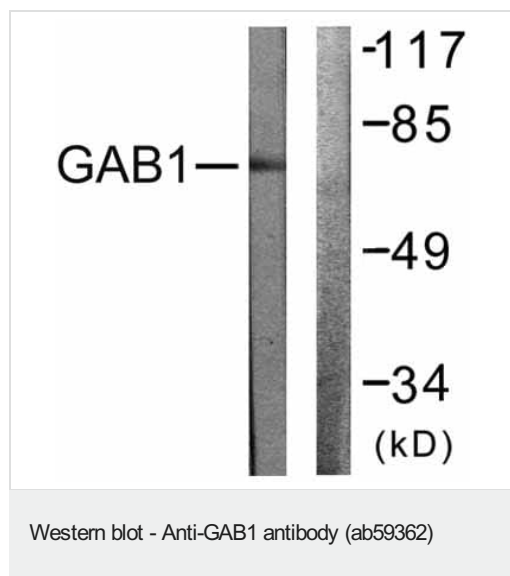
“应用说明”部分 下显示的仅为推荐的起始稀释度;实际最佳的稀释度/浓度应由使用者检定。

应用	Ab评论	说明
ICC/IF		Use a concentration of 1 - 5 µg/ml.
WB		1/500 - 1/1000. Detects a band of approximately 77 kDa.
IHC-P		Use at an assay dependent concentration.

靶标

功能	Probably involved in EGF and insulin receptor signaling.
序列相似性	Belongs to the GAB family. Contains 1 PH domain.
翻译后修饰	Phosphorylated on tyrosine residue(s) by the epidermal growth factor receptor (EGFR) and the insulin receptor (INSR). Tyrosine phosphorylation of GAB1 mediates interaction with several proteins that contain SH2 domains.

图片

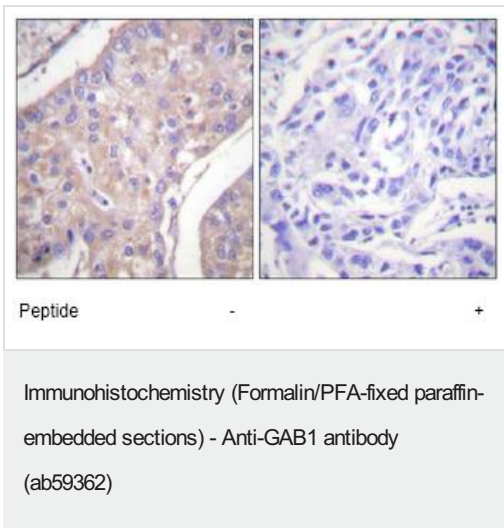


All lanes : Anti-GAB1 antibody (ab59362) at 1/500 dilution

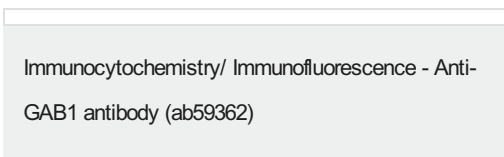
Lane 1 : Extracts from NIH/3T3 cells with no immunizing peptide

Lane 2 : Extracts from NIH/3T3 cells with immunizing peptide

Observed band size: 77 kDa



ab59362, at a 1/50 dilution, staining human GAB1 in breast carcinoma, using Immunohistochemistry, Paraffin embedded tissue, in the absence of the immunizing peptide (left image) and in the presence of the immunizing peptide (right image).



ICC/IF image of ab59362 stained HeLa cells. The cells were 100% methanol fixed (5 min) and then incubated in 1%BSA / 10% normal goat serum / 0.3M glycine in 0.1% PBS-Tween for 1h to permeabilise the cells and block non-specific protein-protein interactions. The cells were then incubated with the antibody (ab59362, 1µg/ml) overnight at +4°C. The secondary antibody (green) was Alexa Fluor® 488 goat anti-rabbit IgG (H+L) used at a 1/1000 dilution for 1h. Alexa Fluor® 594 WGA was used to label plasma membranes (red) at a 1/200 dilution for 1h. DAPI was used to stain the cell nuclei (blue) at a concentration of 1.43µM.

Please note: All products are "FOR RESEARCH USE ONLY. NOT FOR USE IN DIAGNOSTIC PROCEDURES"

Our Abpromise to you: Quality guaranteed and expert technical support

- Replacement or refund for products not performing as stated on the datasheet
- Valid for 12 months from date of delivery
- Response to your inquiry within 24 hours
- We provide support in Chinese, English, French, German, Japanese and Spanish
- Extensive multi-media technical resources to help you
- We investigate all quality concerns to ensure our products perform to the highest standards

If the product does not perform as described on this datasheet, we will offer a refund or replacement. For full details of the Abpromise,

please visit <https://www.abcam.cn/abpromise> or contact our technical team.

Terms and conditions

- Guarantee only valid for products bought direct from Abcam or one of our authorized distributors