


Anti-G-protein coupled receptor 30 antibody ab39742

★★★★★ 11 Abreviews 99 References 4 图像

概述	
产品名称	Anti-G-protein coupled receptor 30抗体
描述	兔多克隆抗体to G-protein coupled receptor 30
宿主	Rabbit
特异性	From Jan 2024, QC testing of replenishment batches of this polyclonal changed. All tested and expected application and reactive species combinations are still covered by our Abcam product promise. However, we no longer test all applications. For more information on a specific batch, please contact our Scientific Support who will be happy to help. You may also be interested in our alternative recombinant antibody, <a href="#">ab260033</a> .
经测试应用	适用于: WB, ICC
种属反应性	与反应: Human 预测可用于: Mouse, Rat 
免疫原	Synthetic peptide conjugated to KLH derived from within residues 350 to the C-terminus of Human GPCR GPR30.参阅Abcam的专有抗源政策(Peptide available as <a href="#">ab41565</a> .)
阳性对照	ICC: Primary rat neurons/glia, DIV14 cells. U87-MG cells. WB: Human brain normal tissue membrane lysate.
常规说明	<p>The Life Science industry has been in the grips of a reproducibility crisis for a number of years. Abcam is leading the way in addressing this with our range of recombinant monoclonal antibodies and knockout edited cell lines for gold-standard validation. Please check that this product meets your needs before purchasing.</p> <p>If you have any questions, special requirements or concerns, please send us an inquiry and/or contact our Support team ahead of purchase. Recommended alternatives for this product can be found below, along with publications, customer reviews and Q&amp;As</p>
性能	
形式	Liquid
存放说明	Shipped at 4°C. Store at +4°C short term (1-2 weeks). Upon delivery aliquot. Store at -20°C or -80°C. Avoid freeze / thaw cycle.
存储溶液	pH: 7.40 Preservative: 0.02% Sodium azide Constituent: PBS

Batches of this product that have a concentration < 1mg/ml may have BSA added as a stabilising agent. If you would like information about the formulation of a specific lot, please contact our scientific support team who will be happy to help.

**纯度** Immunogen affinity purified  
**克隆** 多克隆  
**同种型** IgG

## 应用

**The Abpromise guarantee** **Abpromise™**承诺保证使用ab39742于以下的经测试应用

“应用说明”部分 下显示的仅为推荐的起始稀释度;实际最佳的稀释度/浓度应由使用者检定。

应用	Ab评论	说明
WB	★★★★★ (5)	1/250. Detects a band of approximately 55 kDa (predicted molecular weight: 42 kDa).
ICC		Use a concentration of 1 µg/ml.

## 靶标

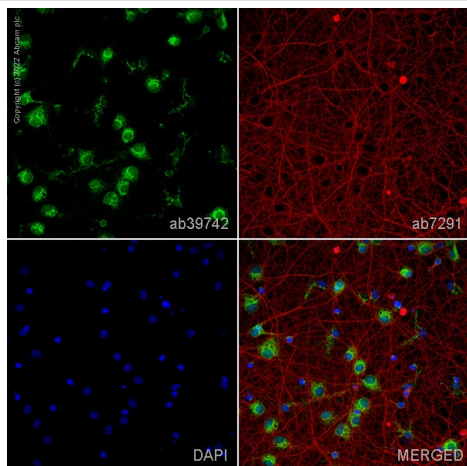
**功能** Receptor for estrogen.

**组织特异性** Ubiquitously expressed, but is most abundant in placenta. In brain regions, expressed as a 2.8 kb transcript in basal forebrain, frontal cortex, thalamus, hippocampus, caudate and putamen.

**序列相似性** Belongs to the G-protein coupled receptor 1 family.

**细胞定位** Cell membrane. Endoplasmic reticulum membrane. Golgi apparatus membrane. Protein has been detected in the cell membrane, endoplasmic reticulum and Golgi apparatus. It is currently unclear whether this is a cell surface or intracellular receptor.

## 图片

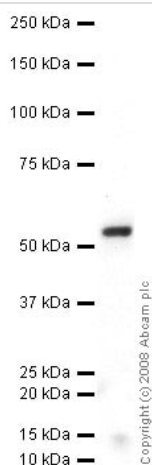


Immunocytochemistry - Anti-G-protein coupled receptor 30 antibody (ab39742)

ab39742 staining G-protein coupled receptor 30 in primary rat neurons/glia, DIV14 (prepared from E18 rat hippocampal brain area, obtained from Transnetix Tissue by BrainBits, LLC, cat.no. SDHEP) cells. The cells were fixed with 100% methanol (5 min), permeabilized with 0.1% PBS-Tween for 5 minutes and then blocked with 1% BSA/10% normal goat serum/0.3M glycine in 0.1%PBS-Tween for 1h. The cells were then incubated overnight at 4°C with ab39742 at 1µg/ml and **ab7291**, Mouse monoclonal [DM1A] to alpha Tubulin - Loading Control. Cells were then incubated with **ab150081**, Goat polyclonal Secondary Antibody to Rabbit IgG - H&L (Alexa Fluor® 488), pre-adsorbed at 1/1000 dilution (shown in green) and **ab150120**, Goat polyclonal Secondary Antibody to Mouse IgG - H&L (Alexa Fluor® 594), pre-adsorbed at 1/1000 dilution (shown in pseudocolour red). Nuclear DNA was labelled with DAPI (shown in blue).

Also suitable in cells fixed with 4% paraformaldehyde (10 min).

Image was acquired with a high-content analyser (Operetta CLS, Perkin Elmer) and a maximum intensity projection of confocal sections is shown.



Western blot - Anti-G-protein coupled receptor 30 antibody (ab39742)

Anti-G-protein coupled receptor 30 antibody (ab39742) at 1 µg/ml + Human brain normal tissue lysate - membrane extract (**ab29456**) at 10 µg

### Secondary

Goat polyclonal to Rabbit IgG - H&L - Pre-Adsorbed (HRP) at 1/3000 dilution

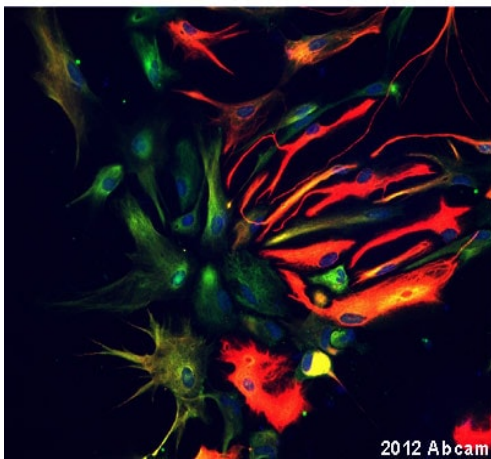
Developed using the ECL technique.

Performed under reducing conditions.

**Predicted band size:** 42 kDa

**Observed band size:** 55 kDa

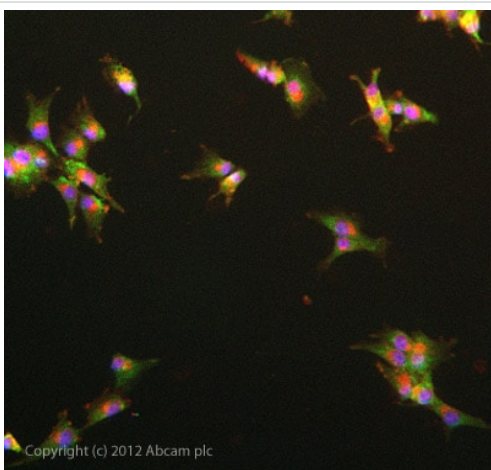
GPR30 contains a number of potential glycosylation sites (SwissProt) which may explain its migration at a higher molecular weight than predicted.



Immunocytochemistry - Anti-G-protein coupled receptor 30 antibody (ab39742)

This image is courtesy of an Abreview submitted by Ruma Raha-Chowdhury

ab39742 staining cultured rat primary astrocytes by ICC/IF. The cultured cells were fixed with 4% paraformaldehyde for 5 minutes and blocked with 10% donkey serum in 0.1% PBS-0.3% TritonX for 30 minutes at 24°C. The cultured cells were then stained with ab39742 at 1/500 in 0.3% TritonX with 0.1% PBS and 10% donkey serum for 4h at 24°C. An Alexa Fluor 488 donkey anti-rabbit polyclonal antibody at 1/1000 was used as the secondary antibody. Nuclei were stained with 1.43µM Hoechst and can be observed in blue. In red astrocytes can be observed (monoclonal anti GFAP).



Immunocytochemistry - Anti-G-protein coupled receptor 30 antibody (ab39742)

ICC/IF image of ab39742 stained U87-MG cells. The cells were 4% formaldehyde fixed (10 min) and then incubated in 1%BSA / 10% normal goat serum / 0.3M glycine in 0.1% PBS-Tween for 1h to permeabilise the cells and block non-specific protein-protein interactions. The cells were then incubated with the antibody ab39742 at 5µg/ml overnight at +4°C. The secondary antibody (green) was DyLight® 488 goat anti- rabbit ([ab96899](#)) IgG (H+L) used at a 1/1000 dilution for 1h. Alexa Fluor® 594 WGA was used to label plasma membranes (red) at a 1/200 dilution for 1h. DAPI was used to stain the cell nuclei (blue) at a concentration of 1.43µM.

**Please note:** All products are "FOR RESEARCH USE ONLY. NOT FOR USE IN DIAGNOSTIC PROCEDURES"

### Our Abpromise to you: Quality guaranteed and expert technical support

- Replacement or refund for products not performing as stated on the datasheet
- Valid for 12 months from date of delivery
- Response to your inquiry within 24 hours
- We provide support in Chinese, English, French, German, Japanese and Spanish
- Extensive multi-media technical resources to help you
- We investigate all quality concerns to ensure our products perform to the highest standards

If the product does not perform as described on this datasheet, we will offer a refund or replacement. For full details of the Abpromise, please visit <https://www.abcam.cn/abpromise> or contact our technical team.

#### **Terms and conditions**

---

- Guarantee only valid for products bought direct from Abcam or one of our authorized distributors