


Anti-FYTTD1 antibody ab125082

★★★★★ [1 Abreviews](#) [2 图像](#)

概述

产品名称	Anti-FYTTD1抗体
描述	兔多克隆抗体to FYTTD1
宿主	Rabbit
经测试应用	适用于: WB, IP
种属反应性	与反应: Mouse, Human 预测可用于: Rat, Horse, Chimpanzee, Rhesus monkey, Gorilla, Orangutan, Bat, Elephant 
免疫原	Synthetic peptide, corresponding to a region within amino acids 1-50 of Human FYTTD1 (NP_115664.2).
阳性对照	293T, Jurkat, HeLa and NIH3T3 whole cell lysates.
常规说明	<p>The Life Science industry has been in the grips of a reproducibility crisis for a number of years. Abcam is leading the way in addressing this with our range of recombinant monoclonal antibodies and knockout edited cell lines for gold-standard validation. Please check that this product meets your needs before purchasing.</p> <p>If you have any questions, special requirements or concerns, please send us an inquiry and/or contact our Support team ahead of purchase. Recommended alternatives for this product can be found below, along with publications, customer reviews and Q&As</p>

性能

形式	Liquid
存放说明	Shipped at 4°C. Upon delivery aliquot and store at -20°C. Avoid freeze / thaw cycles.
存储溶液	pH: 7 Preservative: 0.09% Sodium azide Constituent: 99% Tris citrate/phosphate
纯度	pH 7 to 8 Immunogen affinity purified
纯化说明	ab125082 is affinity purified using an epitope specific to FYTTD1 immobilized on solid support.
克隆	多克隆
同种型	IgG

应用

The Abpromise guarantee

Abpromise™承诺保证使用ab125082于以下的经测试应用

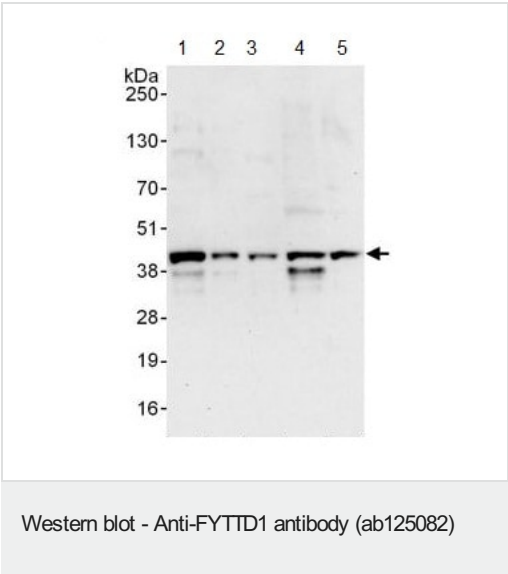
“应用说明”部分 下显示的仅为推荐的起始稀释度;实际最佳的稀释度/浓度应由使用者检定。

应用	Ab评论	说明
WB	★★★★★ (1)	1/1000 - 1/5000. Predicted molecular weight: 36 kDa.
IP		Use at 2-10 µg/mg of lysate.

靶标

功能	Required for mRNA export from the nucleus to the cytoplasm. Acts as an adapter that uses the DDX39B/UAP56-NFX1 pathway to ensure efficient mRNA export and delivering to the nuclear pore. Associates with spliced and unspliced mRNAs simultaneously with THOC4.
序列相似性	Belongs to the UIF family.
细胞定位	Nucleus > nucleoplasm. Nucleus speckle.

图片



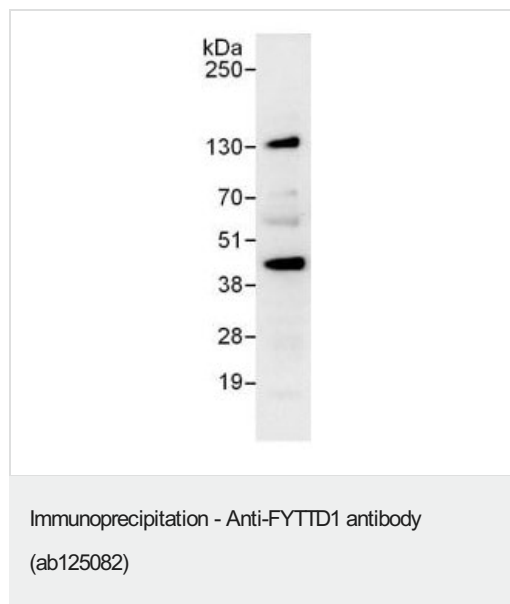
All lanes : Anti-FYTTD1 antibody (ab125082) at 0.4 µg/ml

- Lane 1 : 293T whole cell lysate at 50 µg
- Lane 2 : 293T whole cell lysate at 15 µg
- Lane 3 : Jurkat whole cell lysate at 50 µg
- Lane 4 : HeLa cell lysate at 50 µg
- Lane 5 : NIH3T3 whole cell lysate at 50 µg

Developed using the ECL technique.

Predicted band size: 36 kDa

Exposure time: 30 seconds



Detection of FYTDD1 by Western Blot of Immunoprecipitate.
ab125082 at 1 µg/ml staining FYTDD1 in 293T whole cell lysate
immunoprecipitated using ab125082 at 6 µg/mg lysate (1 mg/IP;
20% of IP loaded/lane).
Detection: Chemiluminescence with exposure time of 30 seconds.

Please note: All products are "FOR RESEARCH USE ONLY. NOT FOR USE IN DIAGNOSTIC PROCEDURES"

Our Abpromise to you: Quality guaranteed and expert technical support

- Replacement or refund for products not performing as stated on the datasheet
- Valid for 12 months from date of delivery
- Response to your inquiry within 24 hours
- We provide support in Chinese, English, French, German, Japanese and Spanish
- Extensive multi-media technical resources to help you
- We investigate all quality concerns to ensure our products perform to the highest standards

If the product does not perform as described on this datasheet, we will offer a refund or replacement. For full details of the Abpromise, please visit <https://www.abcam.cn/abpromise> or contact our technical team.

Terms and conditions

- Guarantee only valid for products bought direct from Abcam or one of our authorized distributors