

Anti-Fyn antibody [2A10] ab119855

1 References **6 图像**

概述

产品名称	Anti-Fyn抗体[2A10]
描述	小鼠单克隆抗体[2A10] to Fyn
宿主	Mouse
经测试应用	适用于: WB, ELISA, IHC-P, Flow Cyt, ICC/IF
种属反应性	与反应: Human, Recombinant fragment
免疫原	Purified recombinant fragment of Human Fyn, expressed in E. coli.
阳性对照	IHC-P: Human breast cancer and brain tissues ICC/IF: U251 cells Flow Cyt: Hela cells
常规说明	<p>The Life Science industry has been in the grips of a reproducibility crisis for a number of years. Abcam is leading the way in addressing this with our range of recombinant monoclonal antibodies and knockout edited cell lines for gold-standard validation. Please check that this product meets your needs before purchasing.</p> <p>If you have any questions, special requirements or concerns, please send us an inquiry and/or contact our Support team ahead of purchase. Recommended alternatives for this product can be found below, along with publications, customer reviews and Q&As</p>

性能

形式	Liquid
存放说明	Shipped at 4°C. Upon delivery aliquot and store at -20°C. Avoid repeated freeze / thaw cycles.
存储溶液	Preservative: 0.05% Sodium azide Constituent: PBS
纯度	Protein G purified
纯化说明	Purified from tissue culture supernatant.
克隆	单克隆
克隆编号	2A10
同种型	IgG1

应用

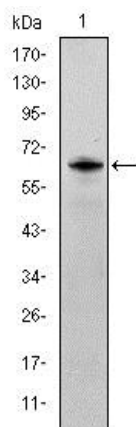
The Abpromise guarantee

Abpromise™承诺保证使用ab119855于以下的经测试应用

“应用说明”部分 下显示的仅为推荐的起始稀释度;实际最佳的稀释度/浓度应由使用者检定。

应用	Ab评论	说明
WB		1/500 - 1/2000. Predicted molecular weight: 61 kDa.
ELISA		1/10000.
IHC-P		1/200 - 1/1000.
Flow Cyt		1/200 - 1/400. ab170190 - Mouse monoclonal IgG1, is suitable for use as an isotype control with this antibody.
ICC/IF		1/200 - 1/1000.

靶标	
功能	<p>Tyrosine-protein kinase implicated in the control of cell growth. Plays a role in the regulation of intracellular calcium levels, with isoform 2 showing the greater ability to mobilize cytoplasmic calcium in comparison to isoform 1. Required in brain development and mature brain function with important roles in the regulation of axon growth, axon guidance, and neurite extension. Blocks axon outgrowth and attraction induced by NTN1 by phosphorylating its receptor DDC. Phosphorylates RUNX3.</p>
组织特异性	<p>Isoform 1 is highly expressed in the brain. Isoform 2 is expressed in cells of hemopoietic lineages, especially T lymphocytes.</p>
序列相似性	<p>Belongs to the protein kinase superfamily. Tyr protein kinase family. SRC subfamily.</p> <p>Contains 1 protein kinase domain.</p> <p>Contains 1 SH2 domain.</p> <p>Contains 1 SH3 domain.</p>
细胞定位	<p>Cell membrane. Present and active in lipid rafts. Present in cell body and along the process of mature and developing oligodendrocytes.</p>
形式	<p>This protein is known to be similar in amino acid sequence to HCK (P08631), LCK (P06239), YES1 (P07947), SRC (P12931), and LYN (P07948). Therefore, cross-reactivity with these homologous proteins may be observed. We would be happy to provide immunogen alignment information upon request.</p>
图片	

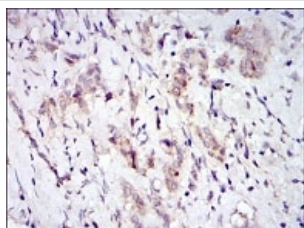


Western blot - Anti-Fyn antibody [2A10] (ab119855)

Anti-Fyn antibody [2A10] (ab119855) at 1/500 dilution + Fyn recombinant protein (7-176 amino acids)

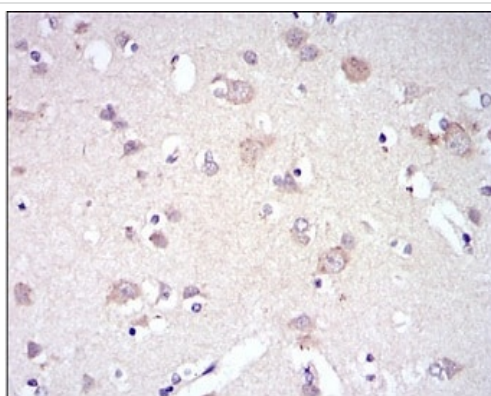
Predicted band size: 61 kDa

Predicted MW of Recombinant Fragment : 44.3 kDa



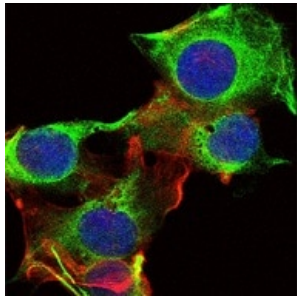
Immunohistochemistry (Formalin/PFA-fixed paraffin-embedded sections) - Anti-Fyn antibody [2A10] (ab119855)

ab119855, at a 1/200 dilution, staining Fyn in paraffin embedded Human breast cancer tissue by Immunohistochemistry, with DAB staining.



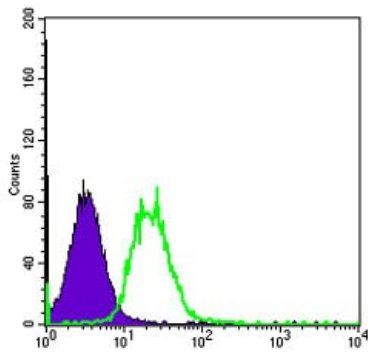
Immunohistochemistry (Formalin/PFA-fixed paraffin-embedded sections) - Anti-Fyn antibody [2A10] (ab119855)

ab119855, at a 1/200 dilution, staining Fyn in paraffin embedded Human brain tissue by Immunohistochemistry, with DAB staining.



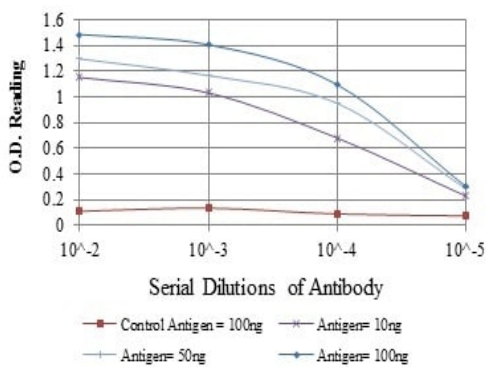
Immunofluorescence analysis of U251 cells, using ab119855 at a 1/200 dilution (green). Blue: DRAQ5 fluorescent DNA dye. Red: Actin filaments have been labeled with Alexa Fluor-555 phalloidin.

Immunocytochemistry/ Immunofluorescence - Anti-Fyn antibody [2A10] (ab119855)



Flow Cytometric analysis of HeLa cells, using ab119855 at a 1/200 dilution (green) and negative control (purple).

Flow Cytometry - Anti-Fyn antibody [2A10] (ab119855)



Elisa results for ab119855

ELISA - Anti-Fyn antibody [2A10] (ab119855)

Please note: All products are "FOR RESEARCH USE ONLY. NOT FOR USE IN DIAGNOSTIC PROCEDURES"

Our Abpromise to you: Quality guaranteed and expert technical support

- Replacement or refund for products not performing as stated on the datasheet
- Valid for 12 months from date of delivery
- Response to your inquiry within 24 hours
- We provide support in Chinese, English, French, German, Japanese and Spanish

- Extensive multi-media technical resources to help you
- We investigate all quality concerns to ensure our products perform to the highest standards

If the product does not perform as described on this datasheet, we will offer a refund or replacement. For full details of the Abpromise, please visit <https://www.abcam.cn/abpromise> or contact our technical team.

Terms and conditions

- Guarantee only valid for products bought direct from Abcam or one of our authorized distributors