

Anti-FSTL3 antibody [RM0080-7D11] ab86055

1 图像

概述

产品名称	Anti-FSTL3抗体[RM0080-7D11]
描述	大鼠单克隆抗体[RM0080-7D11] to FSTL3
宿主	Rat
经测试应用	适用于: WB
种属反应性	与反应: Mouse
免疫原	Mouse recombinant FSTL3.
阳性对照	WB: Mouse embryonic tissue
常规说明	<p>The Life Science industry has been in the grips of a reproducibility crisis for a number of years. Abcam is leading the way in addressing this with our range of recombinant monoclonal antibodies and knockout edited cell lines for gold-standard validation. Please check that this product meets your needs before purchasing.</p> <p>If you have any questions, special requirements or concerns, please send us an inquiry and/or contact our Support team ahead of purchase. Recommended alternatives for this product can be found below, along with publications, customer reviews and Q&As</p>

性能

形式	Liquid
存放说明	Shipped at 4°C. Upon delivery aliquot and store at -20°C. Avoid freeze / thaw cycles.
存储溶液	Constituent: PBS
纯度	Protein A purified
纯化说明	The IgG fraction of culture supernatant was purified by Protein A affinity chromatography filtered sterilized.
克隆	单克隆
克隆编号	RM0080-7D11
同种型	IgG2

应用

The Abpromise guarantee

Abpromise™ 承诺保证使用 ab86055 于以下的经测试应用

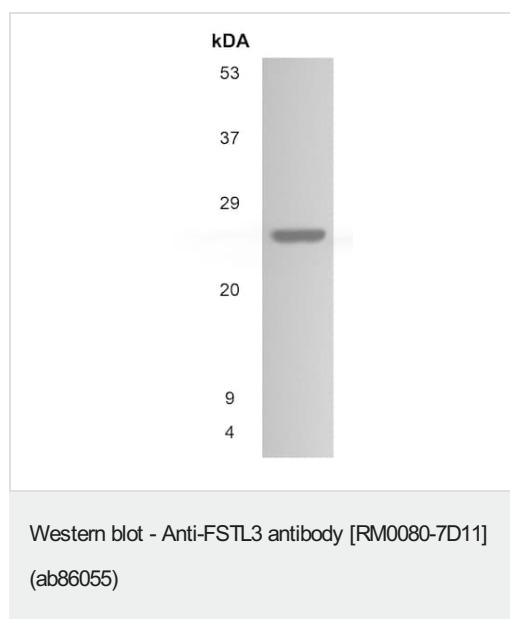
“应用说明”部分下显示的仅为推荐的起始稀释度；实际最佳的稀释度/浓度应由使用者检定。

应用	Ab评论	说明
WB		1/500 - 1/1000. Predicted molecular weight: 28 kDa.

靶标

功能	Isoform 1 or the secreted form is a binding and antagonizing protein for members of the TGF-beta family, such as activin, BMP2 and MSTN. Inhibits activin A-, activin B-, BMP2- and MSDT-induced cellular signaling; more effective on activin A than on activin B. Involved in bone formation; inhibits osteoclast differentiation. Involved in hematopoiesis; involved in differentiation of hemopoietic progenitor cells, increases hematopoietic cell adhesion to fibronectin and seems to contribute to the adhesion of hematopoietic precursor cells to the bone marrow stroma. Isoform 2 or the nuclear form is probably involved in transcriptional regulation via interaction with MLLT10.
组织特异性	Expressed in a wide range of tissues.
疾病相关	Note=A chromosomal aberration involving FSTL3 is found in a case of B-cell chronic lymphocytic leukemia. Translocation t(11;19)(q13;p13) with CCDN1.
序列相似性	Contains 2 follistatin-like domains. Contains 2 Kazal-like domains. Contains 1 TB (TGF-beta binding) domain.
细胞定位	Secreted and Nucleus. Although alternative initiation has been demonstrated and resulted in different localization, the major source of nuclear FSTL3 appears not to depend on translation initiation at Met-27 according to.

图片



Anti-FSTL3 antibody [RM0080-7D11] (ab86055) + Mouse embryonic tissue lysate

Predicted band size: 28 kDa

Please note: All products are "FOR RESEARCH USE ONLY. NOT FOR USE IN DIAGNOSTIC PROCEDURES"

Our Abpromise to you: Quality guaranteed and expert technical support

- Replacement or refund for products not performing as stated on the datasheet
- Valid for 12 months from date of delivery
- Response to your inquiry within 24 hours

- We provide support in Chinese, English, French, German, Japanese and Spanish
- Extensive multi-media technical resources to help you
- We investigate all quality concerns to ensure our products perform to the highest standards

If the product does not perform as described on this datasheet, we will offer a refund or replacement. For full details of the Abpromise, please visit <https://www.abcam.cn/abpromise> or contact our technical team.

Terms and conditions

- Guarantee only valid for products bought direct from Abcam or one of our authorized distributors