

Anti-FREM1 antibody ab105360

1 References **3 图像**

概述

产品名称	Anti-FREM1抗体
描述	兔多克隆抗体to FREM1
宿主	Rabbit
特异性	ab105360 is predicted to not crossreact with other FRAS members. Multiple isoforms are known to exist.
经测试应用	适用于: WB, ICC
种属反应性	与反应: Human
免疫原	A 15 amino acid peptide near the C terminus of Human FREM1 (NP_659403).
阳性对照	K562 cell lysate
常规说明	<p>The Life Science industry has been in the grips of a reproducibility crisis for a number of years. Abcam is leading the way in addressing this with our range of recombinant monoclonal antibodies and knockout edited cell lines for gold-standard validation. Please check that this product meets your needs before purchasing.</p> <p>If you have any questions, special requirements or concerns, please send us an inquiry and/or contact our Support team ahead of purchase. Recommended alternatives for this product can be found below, along with publications, customer reviews and Q&As</p>

性能

形式	Liquid
存放说明	Shipped at 4°C. Store at +4°C.
存储溶液	<p>pH: 7.2</p> <p>Preservative: 0.02% Sodium azide</p> <p>Constituent: PBS</p>
纯度	Immunogen affinity purified
克隆	多克隆
同种型	IgG

应用

The Abpromise guarantee **Abpromise™**承诺保证使用ab105360于以下的经测试应用

“应用说明”部分 下显示的仅为推荐的起始稀释度;实际最佳的稀释度/浓度应由使用者检定。

应用	Ab评论	说明
WB		Use a concentration of 0.5 - 1 µg/ml. Predciated Band: 244 for isoform 1 , for isoform 2 (TILRR), 80 kDa
ICC		Use a concentration of 20 µg/ml.

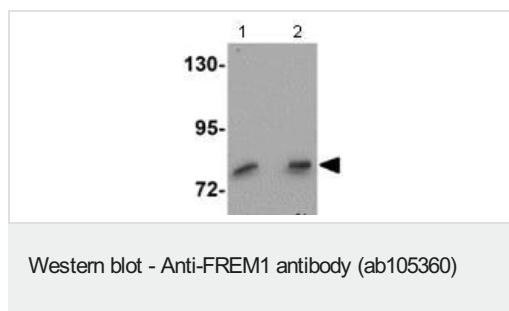
靶标

功能	Extracellular matrix protein that plays a role in epidermal differentiation and is required for epidermal adhesion during embryonic development.
疾病相关	Defects in FREM1 are the cause of bifid nose with or without anorectal and renal anomalies (BNAR) [MIM:608980]. A bifid nose is a rare congenital deformity due to failure of the paired nasal processes to fuse to a single midline organ during early gestation. BNAR is an autosomal recessive disorder and patients usually present a bifid nose associated with renal and anorectal malformations.
序列相似性	Belongs to the FRAS1 family. Contains 1 C-type lectin domain. Contains 1 Calx-beta domain. Contains 12 CSPG (NG2) repeats.
结构域	The Calx-beta domain binds calcium with high affinity and undergo a major conformational shift upon binding.
细胞定位	Secreted > extracellular space > extracellular matrix > basement membrane. Localizes at the basement membrane zone of embryonic epidermis and hair follicles.

图片



Immunofluorescence of FREM1 in K562 cells with ab105360 at 20 ug/mL.



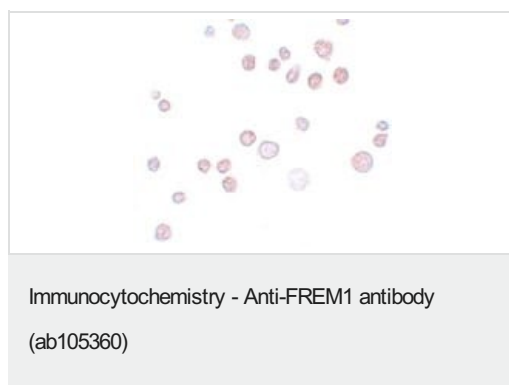
Lane 1 : Anti-FREM1 antibody (ab105360) at 1 µg/ml

Lane 2 : Anti-FREM1 antibody (ab105360) at 0.5 µg/ml

All lanes : K562 cell lysate

Lysates/proteins at 15 µg per lane.

Predicted band size: 244 for isoform 1 , for isoform 2 (**TILRR**), 80 kDa



Immunocytochemistry of FREM1 in K562 cells with ab105360 at 20 µg/ml.

Please note: All products are "FOR RESEARCH USE ONLY. NOT FOR USE IN DIAGNOSTIC PROCEDURES"

Our Abpromise to you: Quality guaranteed and expert technical support

- Replacement or refund for products not performing as stated on the datasheet
- Valid for 12 months from date of delivery
- Response to your inquiry within 24 hours
- We provide support in Chinese, English, French, German, Japanese and Spanish
- Extensive multi-media technical resources to help you
- We investigate all quality concerns to ensure our products perform to the highest standards

If the product does not perform as described on this datasheet, we will offer a refund or replacement. For full details of the Abpromise, please visit <https://www.abcam.cn/abpromise> or contact our technical team.

Terms and conditions

- Guarantee only valid for products bought direct from Abcam or one of our authorized distributors