

Anti-FPRL1/RFP antibody ab63022

6 References 3 图像

概述	
产品名称	Anti-FPRL1/RFP 抗体
描述	兔多克隆抗体to FPRL1/RFP
宿主	Rabbit
特异性	This antibody recognizes human FPRL-1.
经测试应用	适用于: WB, Flow Cyt, ICC/IF
种属反应性	与反应: Human
免疫原	Synthetic peptide corresponding to Human FPRL1/RFP conjugated to keyhole limpet haemocyanin.
阳性对照	HL60 cells and extracts from HL60 cells
常规说明	<p>The Life Science industry has been in the grips of a reproducibility crisis for a number of years. Abcam is leading the way in addressing this with our range of recombinant monoclonal antibodies and knockout edited cell lines for gold-standard validation. Please check that this product meets your needs before purchasing.</p> <p>If you have any questions, special requirements or concerns, please send us an inquiry and/or contact our Support team ahead of purchase. Recommended alternatives for this product can be found below, along with publications, customer reviews and Q&amp;As</p>
性能	
形式	Liquid
存放说明	Shipped at 4°C. Upon delivery aliquot and store at -20°C. Avoid freeze / thaw cycles.
纯度	Protein G purified
克隆	多克隆
同种型	IgG
应用	

The Abpromise guarantee      **Abpromise™** 承诺保证使用ab63022于以下的经测试应用

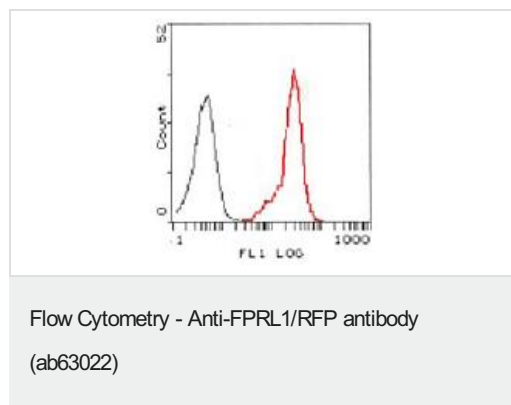
“应用说明”部分 下显示的仅为推荐的起始稀释度;实际最佳的稀释度/浓度应由使用者检定。

应用	Ab评论	说明
WB		1/5000. Detects a band of approximately 38 kDa (predicted molecular weight: 39 kDa).
Flow Cyt		1/100. <b>ab171870</b> - Rabbit polyclonal IgG, is suitable for use as an isotype control with this antibody.
ICC/IF		1/500.

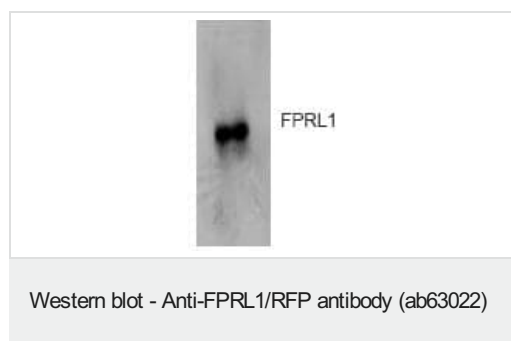
## 靶标

功能	Low affinity receptor for N-formyl-methionyl peptides, which are powerful neutrophils chemotactic factors. Binding of FMLP to the receptor causes activation of neutrophils. This response is mediated via a G-protein that activates a phosphatidylinositol-calcium second messenger system. The activation of LXA4R could result in an anti-inflammatory outcome counteracting the actions of proinflammatory signals such as LTB4 (leukotriene B4).
组织特异性	Expressed abundantly in the lung and neutrophils. Also found in the spleen and testis.
序列相似性	Belongs to the G-protein coupled receptor 1 family.
细胞定位	Cell membrane.

## 图片



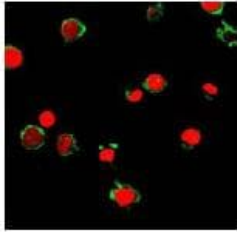
Flow cytometric analysis of HL60 cells using ab63022 at 1:100 (red) compared to a non-specific negative control antibody (black).



Anti-FPRL1/RFP antibody (ab63022) at 1/5000 dilution + Extracts from HL60 cells.

**Predicted band size:** 39 kDa

**Observed band size:** 38 kDa



Immunofluorescent analysis of HL60 cells using ab63022 (green) at 1:500. Nucleus have been labeled with PI (red).

Immunocytochemistry/ Immunofluorescence - Anti-FPRL1/RFP antibody (ab63022)

**Please note:** All products are "FOR RESEARCH USE ONLY. NOT FOR USE IN DIAGNOSTIC PROCEDURES"

### Our Abpromise to you: Quality guaranteed and expert technical support

---

- Replacement or refund for products not performing as stated on the datasheet
- Valid for 12 months from date of delivery
- Response to your inquiry within 24 hours
- We provide support in Chinese, English, French, German, Japanese and Spanish
- Extensive multi-media technical resources to help you
- We investigate all quality concerns to ensure our products perform to the highest standards

If the product does not perform as described on this datasheet, we will offer a refund or replacement. For full details of the Abpromise, please visit <https://www.abcam.cn/abpromise> or contact our technical team.

### Terms and conditions

---

- Guarantee only valid for products bought direct from Abcam or one of our authorized distributors