


Anti-FOXP1 antibody [JC12] ab32010

★★★★★ **5 Abreviews** **37 References** **4 图像**

概述

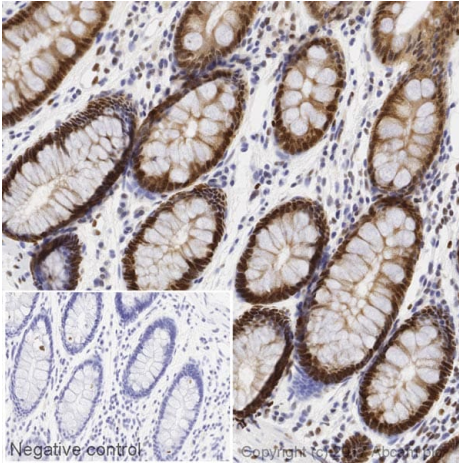
产品名称	Anti-FOXP1抗体[JC12]
描述	小鼠单克隆抗体[JC12] to FOXP1
宿主	Mouse
经测试应用	适用于: IHC-P, WB
种属反应性	与反应: Human 预测可用于: Mouse, Zebra finch 
免疫原	Full length native protein (purified) corresponding to Mouse FOXP1.
阳性对照	WB: BCBL1 human cell line or Mutul human cell line. IHC-P: Human Hodgkin's lymphoma and human colon tissues.
常规说明	<p>This antibody clone is manufactured by Abcam. If you require a custom buffer formulation or conjugation for your experiments, please contact orders@abcam.com.</p> <p>The Life Science industry has been in the grips of a reproducibility crisis for a number of years. Abcam is leading the way in addressing this with our range of recombinant monoclonal antibodies and knockout edited cell lines for gold-standard validation. Please check that this product meets your needs before purchasing.</p> <p>If you have any questions, special requirements or concerns, please send us an inquiry and/or contact our Support team ahead of purchase. Recommended alternatives for this product can be found below, along with publications, customer reviews and Q&As</p>

性能

形式	Liquid
存放说明	Shipped at 4°C. Store at +4°C short term (1-2 weeks). Upon delivery aliquot. Store at -20°C or -80°C. Avoid freeze / thaw cycle.
存储溶液	pH: 7.40 Preservative: 0.02% Sodium azide Constituents: 6.97% L-Arginine, PBS
纯度	Protein G purified
克隆	单克隆
克隆编号	JC12

同种型	IgG2a										
应用	<p>The Abpromise guarantee Abpromise™承诺保证使用ab32010于以下的经测试应用</p> <p>“应用说明”部分 下显示的仅为推荐的起始稀释度;实际最佳的稀释度/浓度应由使用者检定。</p> <table> <tr> <th>应用</th><th>Ab评论</th><th>说明</th></tr> <tr> <td>IHC-P</td><td>★★★★★ (1)</td><td>Use a concentration of 0.1 µg/ml. Perform heat mediated antigen retrieval with citrate buffer pH 6 before commencing with IHC staining protocol.</td></tr> <tr> <td>WB</td><td>★★★★★ (3)</td><td>1/500. Predicted molecular weight: 75 kDa.</td></tr> </table>		应用	Ab评论	说明	IHC-P	★★★★★ (1)	Use a concentration of 0.1 µg/ml. Perform heat mediated antigen retrieval with citrate buffer pH 6 before commencing with IHC staining protocol.	WB	★★★★★ (3)	1/500. Predicted molecular weight: 75 kDa.
应用	Ab评论	说明									
IHC-P	★★★★★ (1)	Use a concentration of 0.1 µg/ml. Perform heat mediated antigen retrieval with citrate buffer pH 6 before commencing with IHC staining protocol.									
WB	★★★★★ (3)	1/500. Predicted molecular weight: 75 kDa.									
靶标											
功能	Transcriptional repressor. It plays an important role in the specification and differentiation of lung epithelium. Can act with CTBP1 to synergistically repress transcription but CTPBP1 is not essential. Essential transcriptional regulator of B cell development.										
疾病相关	<p>Note=A chromosomal aberration involving FOXP1 is found in acute lymphoblastic leukemia. Translocation t(9;3)(p13;p14.1) with PAX5.</p> <p>Defects in FOXP1 are the cause of mental retardation with language impairment and autistic features (MRLIAF) [MIM:613670]. It is a developmental disorder characterized by mild to moderate mental retardation, language impairment, and autistic features. Patients show global delay, delayed walking, severely delayed speech development, and behavioral abnormalities, including irritability, hyperactivity, aggression, and stereotypical rigid behaviors.</p>										
序列相似性	<p>Contains 1 C2H2-type zinc finger.</p> <p>Contains 1 fork-head DNA-binding domain.</p>										
结构域	The leucine-zipper is required for dimerization and transcriptional repression.										
细胞定位	Nucleus.										

图片



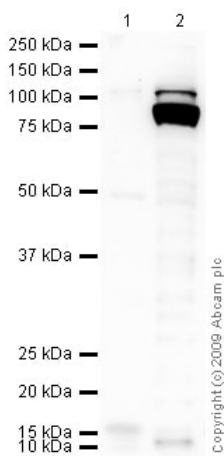
Immunohistochemistry (Formalin/PFA-fixed paraffin-embedded sections) - Anti-FOXP1 antibody [JC12] (ab32010)

IHC image of FOXP1 staining in a section of formalin-fixed paraffin-embedded normal human colon*. The section was pre-treated using heat mediated antigen retrieval with sodium citrate buffer (pH6, epitope retrieval solution 1) for 20 mins. The section was then incubated with ab32010, 0.1ug/ml, for 15 mins at room temperature and detected using an HRP conjugated compact polymer system. DAB was used as the chromogen. The section was then counterstained with haematoxylin and mounted with DPX.

The inset negative control image is taken from an identical assay without primary antibody.

For other IHC staining systems (automated and non-automated) customers should optimize variable parameters such as antigen retrieval conditions, primary antibody concentration and antibody incubation times.

*Tissue obtained from the Human Research Tissue Bank, supported by the NIHR Cambridge Biomedical Research Centre



Western blot - Anti-FOXP1 antibody [JC12] (ab32010)

All lanes : Anti-FOXP1 antibody [JC12] (ab32010) at 10 µg/ml

Lane 1 : HEK293 (Human embryonic kidney cell line) Whole Cell Lysate

Lane 2 : HEK293 Whole Cell Lysate Overexpressing FOXP1

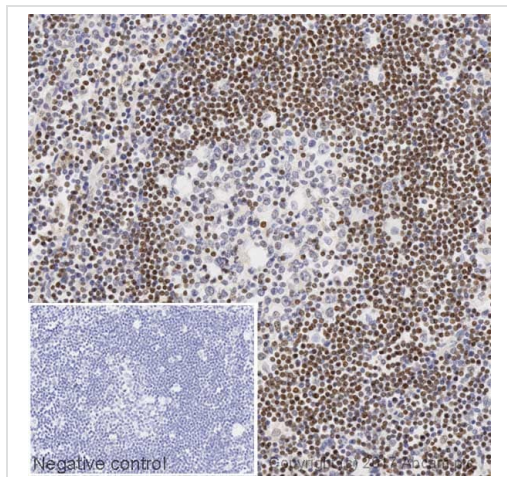
Lysates/proteins at 10 µg per lane.

Secondary

All lanes : Goat polyclonal to Mouse IgG - H&L - Pre-Adsorbed (HRP) ([ab65485](#)) at 1/3000 dilution

Predicted band size: 75 kDa

Observed band size: 100,80 kDa



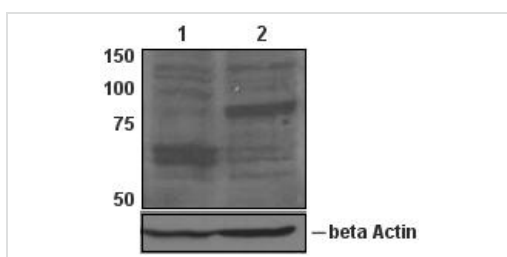
Immunohistochemistry (Formalin/PFA-fixed paraffin-embedded sections) - Anti-FOXP1 antibody [JC12] (ab32010)

IHC image of FOXP1 staining in a section of formalin-fixed paraffin-embedded normal human Hodgkin's lymphoma (CD30+)*, showing positive staining in the mantle zone and negative staining in the Hodgkin's cells and germinal centre. The section was pre-treated using heat mediated antigen retrieval with sodium citrate buffer (pH6, epitope retrieval solution 1) for 20 mins. The section was then incubated with ab32010, 0.1ug/ml, for 15 mins at room temperature and detected using an HRP conjugated compact polymer system. DAB was used as the chromogen. The section was then counterstained with haematoxylin and mounted with DPX.

The inset negative control image is taken from an identical assay without primary antibody.

For other IHC staining systems (automated and non-automated) customers should optimize variable parameters such as antigen retrieval conditions, primary antibody concentration and antibody incubation times.

*Tissue obtained from the Human Research Tissue Bank, supported by the NIHR Cambridge Biomedical Research Centre



Western blot - Anti-FOXP1 antibody [JC12] (ab32010)

All lanes : Anti-FOXP1 antibody [JC12] (ab32010) at 1/500 dilution

Lane 1 : BCBL1 human cell line

Lane 2 : Mutul human cell line

Predicted band size: 75 kDa

Observed band size: 60,65,80 kDa

This antibody recognizes a long form and two short forms of human FOXP1 as described in Blood. 2008. Mar 1; 111(5): 2816-24.

Image kindly provided by H. Hu.

Please note: All products are "FOR RESEARCH USE ONLY. NOT FOR USE IN DIAGNOSTIC PROCEDURES"

Our Abpromise to you: Quality guaranteed and expert technical support

- Replacement or refund for products not performing as stated on the datasheet
- Valid for 12 months from date of delivery
- Response to your inquiry within 24 hours

- We provide support in Chinese, English, French, German, Japanese and Spanish
- Extensive multi-media technical resources to help you
- We investigate all quality concerns to ensure our products perform to the highest standards

If the product does not perform as described on this datasheet, we will offer a refund or replacement. For full details of the Abpromise, please visit <https://www.abcam.cn/abpromise> or contact our technical team.

Terms and conditions

- Guarantee only valid for products bought direct from Abcam or one of our authorized distributors