


Anti-FOXO1A antibody ab70382

★★★★★ **7 Abreviews** **20 References** **2 图像**

概述

产品名称	Anti-FOXO1A抗体
描述	兔多克隆抗体to FOXO1A
宿主	Rabbit
经测试应用	适用于: WB, IP
种属反应性	与反应: Human 预测可用于: Mouse, Rat, Cow, Pig 
免疫原	Synthetic peptide within Human FOXO1A aa 300 to the C-terminus (C terminal). The exact immunogen sequence used to generate this antibody is proprietary information. If additional detail on the immunogen is needed to determine the suitability of the antibody for your needs, please contact our Scientific Support team to discuss your requirements. Database link: Q12778
阳性对照	WB: HepG2, HEK-293T and RKO whole cell lysate. IP: HepG2 whole cell lysate.
常规说明	<p>The Life Science industry has been in the grips of a reproducibility crisis for a number of years. Abcam is leading the way in addressing this with our range of recombinant monoclonal antibodies and knockout edited cell lines for gold-standard validation. Please check that this product meets your needs before purchasing.</p> <p>If you have any questions, special requirements or concerns, please send us an inquiry and/or contact our Support team ahead of purchase. Recommended alternatives for this product can be found below, along with publications, customer reviews and Q&As</p>

性能

形式	Liquid
存放说明	Shipped at 4°C. Upon delivery aliquot and store at -20°C. Avoid freeze / thaw cycles.
存储溶液	pH: 7 Preservative: 0.09% Sodium azide Constituents: 1.815% Tris, 1.764% Sodium citrate, 0.021% PBS
纯度	Immunogen affinity purified
克隆	多克隆
同种型	IgG

应用

The Abpromise guarantee

Abpromise™承诺保证使用ab70382于以下的经测试应用

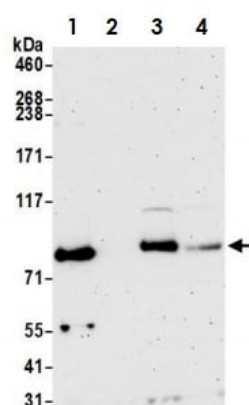
“应用说明”部分 下显示的仅为推荐的起始稀释度;实际最佳的稀释度/浓度应由使用者检定。

应用	Ab评论	说明
WB	★★★★★ (3)	1/2000 - 1/10000. Detects a band of approximately 70 kDa (predicted molecular weight: 70 kDa).
IP	★★★★★ (1)	Use at 2-10 µg/mg of lysate.

靶标

功能	Transcription factor which acts as a regulator of cell responses to oxidative stress. In the presence of KIRT1, mediates down-regulation of cyclin D1 and up-regulation of CDKN1B levels which are required for cell transition from proliferative growth to quiescence.
组织特异性	Ubiquitous.
疾病相关	Defects in FOXO1 are a cause of rhabdomyosarcoma type 2 (RMS2) [MIM:268220]. It is a form of rhabdomyosarcoma, a highly malignant tumor of striated muscle derived from primitive mesenchymal cells and exhibiting differentiation along rhabdomyoblastic lines. Rhabdomyosarcoma is one of the most frequently occurring soft tissue sarcomas and the most common in children. It occurs in four forms: alveolar, pleomorphic, embryonal and botryoidal rhabdomyosarcomas. Note=Chromosomal aberrations involving FOXO1 are found in rhabdomyosarcoma. Translocation (2;13)(q35;q14) with PAX3; translocation t(1;13)(p36;q14) with PAX7. The resulting protein is a transcriptional activator.
序列相似性	Contains 1 fork-head DNA-binding domain.
翻译后修饰	Phosphorylated by AKT1; insulin-induced (By similarity). IGF1 rapidly induces phosphorylation of Ser-256, Thr-24, and Ser-319. Phosphorylation of Ser-256 decreases DNA-binding activity and promotes the phosphorylation of Thr-24, and Ser-319, permitting phosphorylation of Ser-322 and Ser-325, probably by CK1, leading to nuclear exclusion and loss of function. Phosphorylation of Ser-329 is independent of IGF1 and leads to reduced function. Phosphorylated upon DNA damage, probably by ATM or ATR.
细胞定位	Cytoplasm. Nucleus. Shuttles between cytoplasm and nucleus.

图片



Western blot - Anti-FOXO1A antibody (ab70382)

All lanes : Anti-FOXO1A antibody (ab70382) at 0.1 µg/ml

Lane 1 : HepG2 (Human liver hepatocellular carcinoma cell line) whole cell lysate

Lane 2 : HeLa (Human epithelial cell line from cervix adenocarcinoma) whole cell lysate

Lane 3 : HEK-293T (Human epithelial cell line from embryonic kidney transformed with large T antigen) whole cell lysate

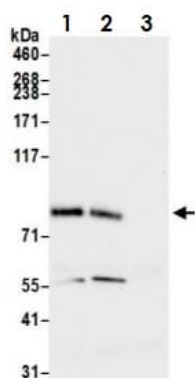
Lane 4 : RKO (Human colon carcinoma cell line) whole cell lysate

Lysates/proteins at 50 µg per lane.

Predicted band size: 70 kDa

Exposure time: 3 minutes

Lysates prepared using NTEN lysis buffer.



Immunoprecipitation - Anti-FOXO1A antibody (ab70382)

Detection of human FOXO1A by western blot of immunoprecipitates.

Samples: Whole cell lysate (1.0 mg per IP reaction; 20% of IP loaded) from HepG2 (Human liver hepatocellular carcinoma cell line) cells prepared using NETN lysis buffer.

Antibodies: ab70382 used for IP at 6 µg per reaction. FOXO1A was also immunoprecipitated by a previous lot of this antibody. For blotting immunoprecipitated ab70382 was used at 0.1 µg/ml.

Please note: All products are "FOR RESEARCH USE ONLY. NOT FOR USE IN DIAGNOSTIC PROCEDURES"

Our Abpromise to you: Quality guaranteed and expert technical support

- Replacement or refund for products not performing as stated on the datasheet
- Valid for 12 months from date of delivery
- Response to your inquiry within 24 hours

- We provide support in Chinese, English, French, German, Japanese and Spanish
- Extensive multi-media technical resources to help you
- We investigate all quality concerns to ensure our products perform to the highest standards

If the product does not perform as described on this datasheet, we will offer a refund or replacement. For full details of the Abpromise, please visit <https://www.abcam.cn/abpromise> or contact our technical team.

Terms and conditions

- Guarantee only valid for products bought direct from Abcam or one of our authorized distributors