

Anti-FOXC2 antibody ab5060

27 References **2 图像**

概述

产品名称	Anti-FOXC2抗体
描述	山羊多克隆抗体to FOXC2
宿主	Goat
经测试应用	适用于: WB, ChIP 不适用于: IHC-Fr
种属反应性	与反应: Mouse, Human, African green monkey 预测可用于: Rat, Cow, Dog 
免疫原	Synthetic peptide: RHAAPYSYDCTKY , corresponding to C terminal amino acids 489-501 of Human FOXC2.  Run BLAST with  Run BLAST with
阳性对照	WB: HEK-293 nuclear lysate.
常规说明	<p>The Life Science industry has been in the grips of a reproducibility crisis for a number of years. Abcam is leading the way in addressing this with our range of recombinant monoclonal antibodies and knockout edited cell lines for gold-standard validation. Please check that this product meets your needs before purchasing.</p> <p>If you have any questions, special requirements or concerns, please send us an inquiry and/or contact our Support team ahead of purchase. Recommended alternatives for this product can be found below, along with publications, customer reviews and Q&As</p>

性能

形式	Liquid
存放说明	Shipped at 4°C. Store at +4°C short term (1-2 weeks). Upon delivery aliquot. Store at -20°C or -80°C. Avoid freeze / thaw cycle.
存储溶液	pH: 7.3 Preservative: 0.02% Sodium azide Constituents: Tris buffered saline, 0.5% BSA
纯度	Immunogen affinity purified
纯化说明	Purified from goat serum by ammonium sulphate precipitation followed by antigen affinity chromatography using the immunizing peptide.

克隆

多克隆

同种型

IgG

应用

The Abpromise guarantee

Abpromise™承诺保证使用ab5060于以下的经测试应用

“应用说明”部分 下显示的仅为推荐的起始稀释度;实际最佳的稀释度/浓度应由使用者检定。

应用	Ab评论	说明
WB		Use a concentration of 0.1 - 2 µg/ml. Detects a band of approximately 60-70 kDa (predicted molecular weight: 53 kDa). A 1 hour primary incubation is recommended for this product.
ChIP		Use at an assay dependent concentration. PubMed: 18579532

应用说明

Is unsuitable for IHC-Fr.

靶标

功能

Transcriptional activator. Might be involved in the formation of special mesenchymal tissues.

疾病相关

Defects in FOXC2 are the cause of lymphedema hereditary type 2 (LMPH2) [MIM:153200]; also known as Meige lymphedema. Hereditary lymphedema is a chronic disabling condition which results in swelling of the extremities due to altered lymphatic flow. Patients with lymphedema suffer from recurrent local infections, and physical impairment.
Defects in FOXC2 are a cause of lymphedema-yellow nails (LYYN) [MIM:153300]. LYYN is characterized by yellow, dystrophic, thick and slowly growing nails, associated with lymphedema and respiratory involvement. Lymphedema occurs more often in the lower limbs. It can appear at birth or later in life. Onset generally follows the onset of ungual abnormalities.
Defects in FOXC2 are a cause of lymphedema-distichiasis (LYD) [MIM:153400]. LYD is characterized by primary limb lymphedema usually starting at puberty (but in some cases later or at birth) and associated with distichiasis (double rows of eyelashes, with extra eyelashes growing from the Meibomian gland orifices).

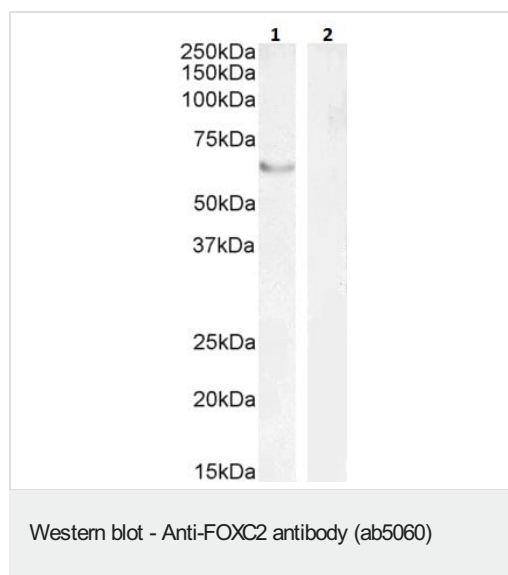
序列相似性

Contains 1 fork-head DNA-binding domain.

细胞定位

Nucleus.

图片



Lane 1 : Anti-FOXC2 antibody (ab5060) at 2 µg/ml

Lane 2 : Anti-FOXC2 antibody (ab5060) at 1 µg/ml

Lane 1 : nuclear HEK293 lysate in RIPA buffer

Lane 2 : human pancreas whole cell lysate (negative control) in RIPA buffer

Lysates/proteins at 35 µg per lane.

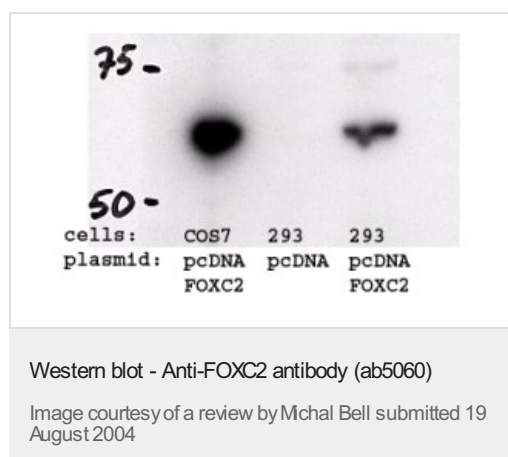
Developed using the ECL technique.

Predicted band size: 53 kDa

Observed band size: 60-70 kDa

Primary incubation: 1 hour at room temperature.

Negative Control: Human Pancreas lysate.



FoxC2 is highly expressed in COS7 and 293 cells transiently transfected with pcDNA-FOX2. This figure shows a western blot incubated with the ab5060 antibody after running lysates from COS7 and 293 cells transiently expressing FoxC2 (lane 1 and 3 respectively). Lane 2 shows a negative control of 293 cells transfected with an empty vector.

Please note: All products are "FOR RESEARCH USE ONLY. NOT FOR USE IN DIAGNOSTIC PROCEDURES"

Our Abpromise to you: Quality guaranteed and expert technical support

- Replacement or refund for products not performing as stated on the datasheet

- Valid for 12 months from date of delivery
- Response to your inquiry within 24 hours
- We provide support in Chinese, English, French, German, Japanese and Spanish
- Extensive multi-media technical resources to help you
- We investigate all quality concerns to ensure our products perform to the highest standards

If the product does not perform as described on this datasheet, we will offer a refund or replacement. For full details of the Abpromise, please visit <https://www.abcam.cn/abpromise> or contact our technical team.

Terms and conditions

- Guarantee only valid for products bought direct from Abcam or one of our authorized distributors