


# Anti-FOLR2 antibody ab103998

## 2 图像

### 概述

产品名称	Anti-FOLR2抗体
描述	兔多克隆抗体to FOLR2
宿主	Rabbit
经测试应用	适用于: ICC/IF, WB
种属反应性	与反应: Human 预测可用于: Rat 
免疫原	Synthetic peptide corresponding to Human FOLR2 aa 1-100 conjugated to keyhole limpet haemocyanin. (Peptide available as <a href="#">ab104497</a> )
阳性对照	This antibody gave a positive signal in the following human tissue lysates: Spleen; Bone marrow; Thymus
常规说明	<p>The Life Science industry has been in the grips of a reproducibility crisis for a number of years. Abcam is leading the way in addressing this with our range of recombinant monoclonal antibodies and knockout edited cell lines for gold-standard validation. Please check that this product meets your needs before purchasing.</p> <p>If you have any questions, special requirements or concerns, please send us an inquiry and/or contact our Support team ahead of purchase. Recommended alternatives for this product can be found below, along with publications, customer reviews and Q&amp;As</p>

### 性能

形式	Liquid
存放说明	Shipped at 4°C. Store at +4°C short term (1-2 weeks). Upon delivery aliquot. Store at -20°C or -80°C. Avoid freeze / thaw cycle.
存储溶液	pH: 7.40 Preservative: 0.02% Sodium azide Constituent: PBS
	Batches of this product that have a concentration < 1mg/ml may have BSA added as a stabilising agent. If you would like information about the formulation of a specific lot, please contact our scientific support team who will be happy to help.

纯度	Immunogen affinity purified
克隆	多克隆
同种型	IgG

应用

**The Abpromise guarantee**      **Abpromise™**承诺保证使用ab103998于以下的经测试应用

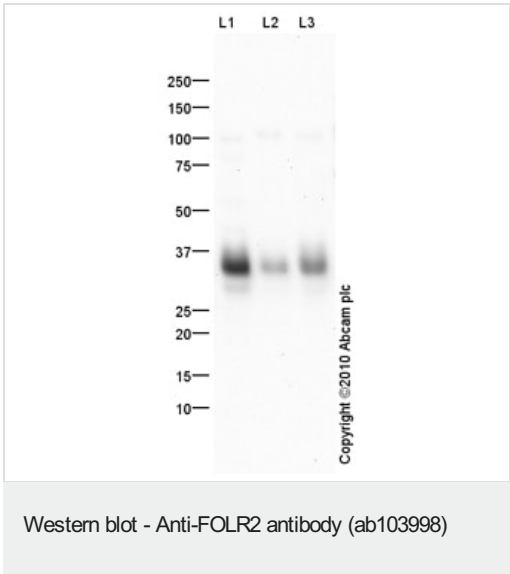
“应用说明”部分 下显示的仅为推荐的起始稀释度;实际最佳的稀释度/浓度应由使用者检定。

应用	Ab评论	说明
ICC/IF		Use a concentration of 5 µg/ml.
WB		Use a concentration of 1 µg/ml. Detects a band of approximately 35 kDa (predicted molecular weight: 32 kDa).

靶标

功能	Binds to folate and reduced folic acid derivatives and mediates delivery of 5-methyltetrahydrofolate to the interior of cells.
组织特异性	Expressed in placenta and hematopoietic cells. Expression is increased in malignant tissues.
序列相似性	Belongs to the folate receptor family.
翻译后修饰	Eight disulfide bonds are present. N-glycosylated.
细胞定位	Cell membrane. Secreted.

图片



**All lanes** : Anti-FOLR2 antibody (ab103998) at 1 µg/ml

**Lane 1** : Human spleen tissue lysate - total protein ([ab29699](#))

**Lane 2** : Bone marrow (Human) Tissue Lysate

**Lane 3** : Human thymus tissue lysate - total protein ([ab30146](#))

Lysates/proteins at 10 µg per lane.

**Secondary**

**All lanes** : Goat Anti-Rabbit IgG H&L (HRP) preadsorbed ([ab97080](#)) at 1/5000 dilution

Developed using the ECL technique.

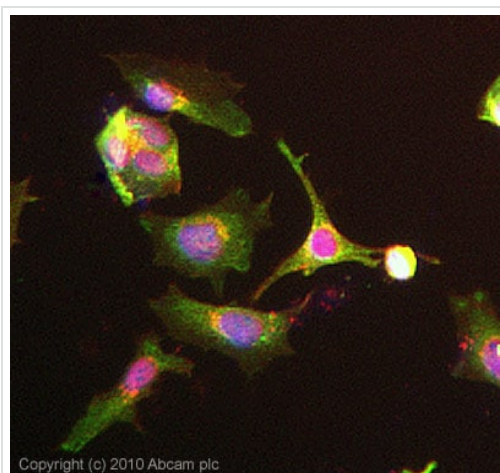
Performed under reducing conditions.

**Predicted band size:** 32 kDa

**Observed band size:** 35 kDa

**Exposure time:** 8 minutes

FOLR2 contains a number of potential glycosylation sites (SwissProt) which may explain its migration at a higher molecular weight than predicted.



Immunocytochemistry/ Immunofluorescence - Anti-FOLR2 antibody (ab103998)

ICC/IF image of ab103998 stained HeLa cells. The cells were 4% formaldehyde fixed (10 min) and then incubated in 1%BSA / 10% normal goat serum / 0.3M glycine in 0.1% PBS-Tween for 1h to permeabilise the cells and block non-specific protein-protein interactions. The cells were then incubated with the antibody ab103998 at 5µg/ml overnight at +4°C. The secondary antibody (green) was Alexa Fluor® 488 goat anti- rabbit IgG (H+L) used at a 1/1000 dilution for 1h. Alexa Fluor® 594 WGA was used to label plasma membranes (red) at a 1/200 dilution for 1h. DAPI was used to stain the cell nuclei (blue) at a concentration of 1.43µM. This antibody also gave a positive result in Hek293, HepG2, and MCF-7 formaldehyde fixed cells at 5ug/ml and also in HeLa, Hek293, HepG2, and MCF-7 Methanol fixed cells at 5ug/ml.

**Please note:** All products are "FOR RESEARCH USE ONLY. NOT FOR USE IN DIAGNOSTIC PROCEDURES"

### Our Abpromise to you: Quality guaranteed and expert technical support

- Replacement or refund for products not performing as stated on the datasheet
- Valid for 12 months from date of delivery
- Response to your inquiry within 24 hours
- We provide support in Chinese, English, French, German, Japanese and Spanish
- Extensive multi-media technical resources to help you
- We investigate all quality concerns to ensure our products perform to the highest standards

If the product does not perform as described on this datasheet, we will offer a refund or replacement. For full details of the Abpromise, please visit <https://www.abcam.cn/abpromise> or contact our technical team.

### Terms and conditions

- Guarantee only valid for products bought direct from Abcam or one of our authorized distributors