


### Anti-Follistatin antibody ab64490

★★★★☆ [3 Abreviews](#) [6 References](#) [2 图像](#)

#### 概述

<b>产品名称</b>	Anti-Follistatin抗体
<b>描述</b>	兔多克隆抗体to Follistatin
<b>宿主</b>	Rabbit
<b>经测试应用</b>	<b>适用于:</b> WB
<b>种属反应性</b>	<b>与反应:</b> Mouse, Rat, Human <b>预测可用于:</b> Chicken, Cow, Dog, Pig, Chimpanzee, Rhesus monkey 
<b>免疫原</b>	Synthetic peptide conjugated to KLH derived from within residues 300 to the C-terminus of Human Follistatin.参阅Abcam的 <b>专有抗源政策</b> (Peptide available as <a href="#">ab74741</a> .)
<b>阳性对照</b>	Recombinant human Follistatin protein ( <a href="#">ab50163</a> ) can be used as a positive control in WB. This antibody gave a positive signal in the following Lysates: Mouse Liver Tissue, Raji Whole Cell, MOLT4 Whole Cell, Mouse Colon Tissue, Rat Liver Tissue, Human liver tissue
<b>常规说明</b>	<p>The Life Science industry has been in the grips of a reproducibility crisis for a number of years. Abcam is leading the way in addressing this with our range of recombinant monoclonal antibodies and knockout edited cell lines for gold-standard validation. Please check that this product meets your needs before purchasing.</p> <p>If you have any questions, special requirements or concerns, please send us an inquiry and/or contact our Support team ahead of purchase. Recommended alternatives for this product can be found below, along with publications, customer reviews and Q&amp;As</p>

#### 性能

<b>形式</b>	Liquid
<b>存放说明</b>	Shipped at 4°C. Store at +4°C short term (1-2 weeks). Upon delivery aliquot. Store at -20°C or -80°C. Avoid freeze / thaw cycle.
<b>存储溶液</b>	<p>pH: 7.40</p> <p>Preservative: 0.02% Sodium azide</p> <p>Constituent: PBS</p> <p>Batches of this product that have a concentration &lt; 1mg/ml may have BSA added as a stabilising agent. If you would like information about the formulation of a specific lot, please contact our scientific support team who will be happy to help.</p>

纯度	Immunogen affinity purified
克隆	多克隆
同种型	IgG

## 应用

**The Abpromise guarantee**      **Abpromise™**承诺保证使用ab64490于以下的经测试应用

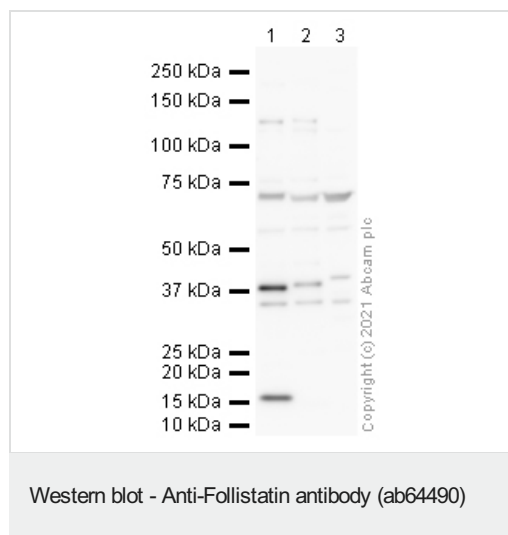
“应用说明”部分下显示的仅为推荐的起始稀释度;实际最佳的稀释度/浓度应由使用者检定。

应用	Ab评论	说明
WB	★★★★★ (2)	Use a concentration of 1 µg/ml. Detects a band of approximately 38 kDa (predicted molecular weight: 38 kDa).

## 靶标

功能	Binds directly to activin and functions as an activin antagonist. Specific inhibitor of the biosynthesis and secretion of pituitary follicle stimulating hormone (FSH).
组织特异性	Isoform 1 is the predominant isoform in serum but is undetectable in follicular fluid.
序列相似性	Contains 3 follistatin-like domains. Contains 3 Kazal-like domains. Contains 1 TB (TGF-beta binding) domain.
细胞定位	Secreted.

## 图片



**All lanes** : Anti-Follistatin antibody (ab64490) at 1 µg/ml

**Lane 1** : Mouse liver lysate

**Lane 2** : Rat liver lysate

**Lane 3** : Human liver lysate

Lysates/proteins at 20 µg per lane.

### Secondary

**All lanes** : Goat Anti-Rabbit IgG H&L (HRP) at 1/50000 dilution

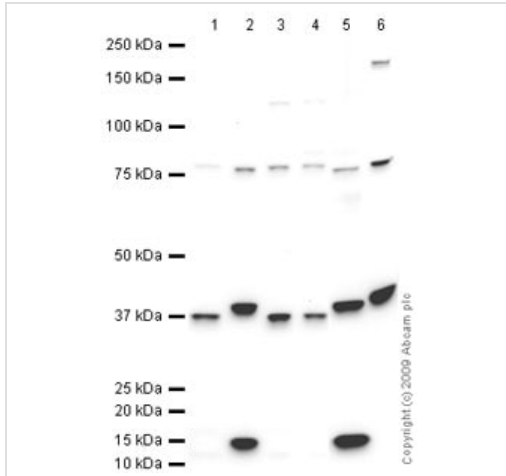
**Predicted band size:** 38 kDa

**Additional bands at:** 15 kDa (possible non-specific binding), 35 kDa (possible isoform), 38 kDa (possible isoform), 60 kDa (possible non-specific binding), 70 kDa (possible non-specific binding)

**Exposure time:** 2 minutes

Blocking buffer: 2% BSA

Gel type: MOPS



Western blot - Anti-Follistatin antibody (ab64490)

**All lanes :** Anti-Follistatin antibody (ab64490) at 1 µg/ml

**Lane 1 :** U2OS (Human osteosarcoma cell line) Whole Cell Lysate

**Lane 2 :** Liver (Mouse) Tissue Lysate

**Lane 3 :** Raji (Human Burkitt's lymphoma cell line) Whole Cell Lysate

**Lane 4 :** MOLT4 (Human acute lymphoblastic leukemia cell line) Whole Cell Lysate

**Lane 5 :** Colon (Mouse) Tissue Lysate

**Lane 6 :** Liver (Rat) Tissue Lysate

Lysates/proteins at 10 µg per lane.

### Secondary

**All lanes :** Goat polyclonal to Rabbit IgG - H&L - Pre-Adsorbed (HRP) at 1/3000 dilution

Developed using the ECL technique.

Performed under reducing conditions.

**Predicted band size:** 38 kDa

**Observed band size:** 38 kDa

**Additional bands at:** 15 kDa, 75 kDa. We are unsure as to the identity of these extra bands.

**Exposure time:** 1 minute

**Please note:** All products are "FOR RESEARCH USE ONLY. NOT FOR USE IN DIAGNOSTIC PROCEDURES"

### Our Abpromise to you: Quality guaranteed and expert technical support

- Replacement or refund for products not performing as stated on the datasheet
- Valid for 12 months from date of delivery
- Response to your inquiry within 24 hours

- We provide support in Chinese, English, French, German, Japanese and Spanish
- Extensive multi-media technical resources to help you
- We investigate all quality concerns to ensure our products perform to the highest standards

If the product does not perform as described on this datasheet, we will offer a refund or replacement. For full details of the Abpromise, please visit <https://www.abcam.cn/abpromise> or contact our technical team.

#### **Terms and conditions**

---

- Guarantee only valid for products bought direct from Abcam or one of our authorized distributors