


Anti-Flotillin 1 antibody ab41927

敲除验证

★★★★☆ 10 Abreviews 77 References 5 图像

概述

产品名称	Anti-Flotillin 1 抗体
描述	兔多克隆抗体to Flotillin 1
宿主	Rabbit
特异性	This target has been reported to show both cytoplasmic and nuclear localisation (PMID: 15713644). From Jan 2024, QC testing of replenishment batches of this polyclonal changed. All tested and expected application and reactive species combinations are still covered by our Abcam product promise. However, we no longer test all applications. For more information on a specific batch, please contact our Scientific Support who will be happy to help. You may also be interested in our alternative recombinant antibody, ab133497 .
经测试应用	适用于: ICC/IF, WB
种属反应性	与反应: Human 预测可用于: Mouse, Rat, Dog, a wide range of other species 
免疫原	Synthetic peptide corresponding to Human Flotillin 1 aa 1-100 conjugated to keyhole limpet haemocyanin. (Peptide available as ab41926)
常规说明	<p>The Life Science industry has been in the grips of a reproducibility crisis for a number of years. Abcam is leading the way in addressing this with our range of recombinant monoclonal antibodies and knockout edited cell lines for gold-standard validation. Please check that this product meets your needs before purchasing.</p> <p>If you have any questions, special requirements or concerns, please send us an inquiry and/or contact our Support team ahead of purchase. Recommended alternatives for this product can be found below, along with publications, customer reviews and Q&As</p>

性能

形式	Liquid
存放说明	Shipped at 4°C. Store at +4°C short term (1-2 weeks). Upon delivery aliquot. Store at -20°C or -80°C. Avoid freeze / thaw cycle.
存储溶液	pH: 7.40 Preservative: 0.02% Sodium azide

Constituent: PBS

Batches of this product that have a concentration < 1mg/ml may have BSA added as a stabilising agent. If you would like information about the formulation of a specific lot, please contact our scientific support team who will be happy to help.

纯度 Immunogen affinity purified
克隆 多克隆
同种型 IgG

应用

The Abpromise guarantee Abpromise™承诺保证使用ab41927于以下的经测试应用

“应用说明”部分 下显示的仅为推荐的起始稀释度;实际最佳的稀释度/浓度应由使用者检定。

应用	Ab评论	说明
ICC/IF	★★★★★ (2)	1/200. Fix cells with methanol
WB	★★★★★ (2)	Use a concentration of 1 µg/ml. Detects a band of approximately 47 kDa (predicted molecular weight: 47 kDa). Can be blocked with Human Flotillin 1 peptide (ab41926) .

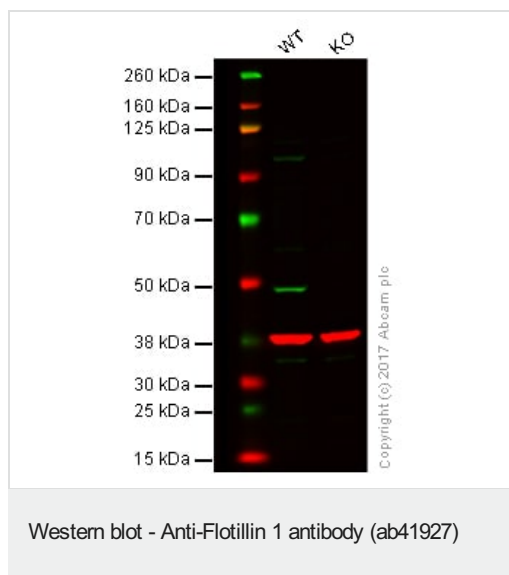
靶标

功能 May act as a scaffolding protein within caveolar membranes, functionally participating in formation of caveolae or caveolae-like vesicles.

序列相似性 Belongs to the band 7/mec-2 family. Flotillin subfamily.

细胞定位 Cell membrane. Membrane > caveola. Melanosome. Endosome. Membrane-associated protein of caveolae. Identified by mass spectrometry in melanosome fractions from stage I to stage IV.

图片

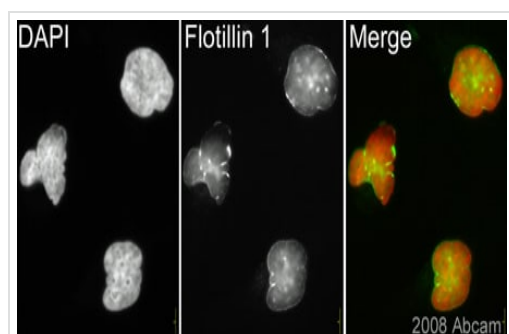


Lane 1: Wild-type HAP1 whole cell lysate (20 µg)

Lane 2: Flotillin 1 knockout HAP1 whole cell lysate (20 µg)

Lanes 1 - 4: Merged signal (red and green). Green - ab41927 observed at 47 kDa. Red - loading control, [ab9484](#), observed at 37 kDa.

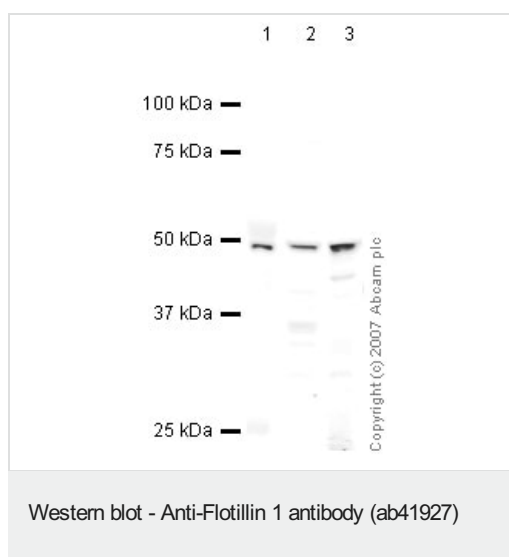
ab41927 was shown to specifically react with Flotillin 1 in wild-type HAP1 cells as signal was lost in Flotillin 1 knockout cells. Wild-type and Flotillin 1 knockout samples were subjected to SDS-PAGE. ab41927 and [ab9484](#) (Mouse anti-GAPDH loading control) were incubated overnight at 4°C at 1 µg/ml and 1/20000 dilution respectively. Blots were developed with Goat anti-Rabbit IgG H&L (IRDye® 800CW) preabsorbed [ab216773](#) and Goat anti-Mouse IgG H&L (IRDye® 680RD) preabsorbed [ab216776](#) secondary antibodies at 1/20000 dilution for 1 hour at room temperature before imaging.



Immunocytochemistry/ Immunofluorescence - Anti-Flotillin 1 antibody (ab41927)

This image is part of an abreview submitted by Dr. Kirk McManus

ab41927 (1/200) staining Flotillin 1 in HeLa cells (green). Cells were fixed with Methanol and counterstained with DAPI in order to highlight the nucleus (red). Please refer to abreview for further experimental details.



All lanes : Anti-Flotillin 1 antibody (ab41927) at 1 µg/ml

Lane 1 : Lung (Human) Tissue Lysate

Lane 2 : HeLa (Human epithelial carcinoma cell line) Whole Cell Lysate

Lane 3 : Human brain tissue lysate - total protein ([ab29466](#))

Lysates/proteins at 10 µg per lane.

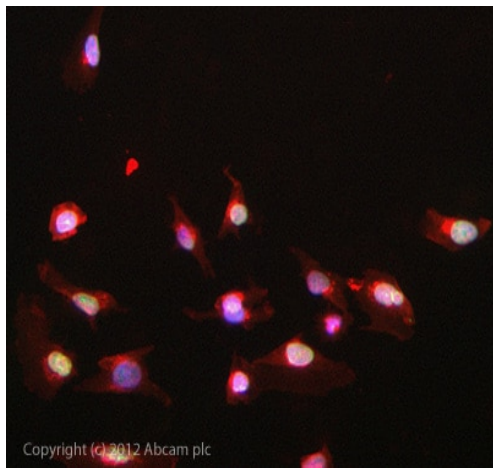
Secondary

All lanes : IRDye 680 Conjugated Goat Anti-Rabbit IgG (H+L) at 1/10000 dilution

Performed under reducing conditions.

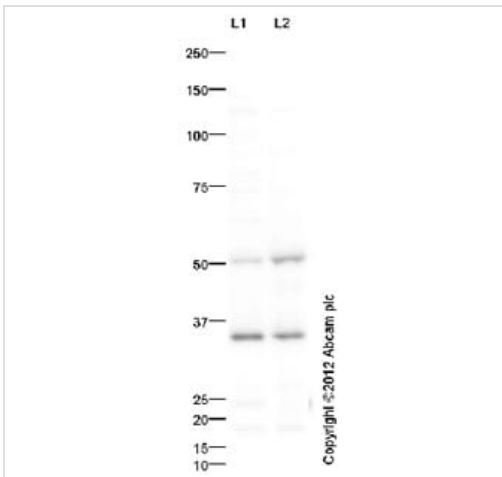
Predicted band size: 47 kDa

Observed band size: 47 kDa



Immunocytochemistry/ Immunofluorescence - Anti-Flotillin 1 antibody (ab41927)

ICC/IF image of ab41927 stained HeLa cells. The cells were 4% formaldehyde fixed (10 min) and then incubated in 1%BSA / 10% normal goat serum / 0.3M glycine in 0.1% PBS-Tween for 1h to permeabilise the cells and block non-specific protein-protein interactions. The cells were then incubated with the antibody ab41927 at 1µg/ml overnight at +4°C. The secondary antibody (green) was DyLight® 488 goat anti- rabbit ([ab96899](#)) IgG (H+L) used at a 1/1000 dilution for 1h. Alexa Fluor® 594 WGA was used to label plasma membranes (red) at a 1/200 dilution for 1h. DAPI was used to stain the cell nuclei (blue) at a concentration of 1.43µM.



Western blot - Anti-Flotillin 1 antibody (ab41927)

All lanes : Anti-Flotillin 1 antibody (ab41927) at 1 µg/ml

Lane 1 : HeLa (Human epithelial carcinoma cell line) Whole Cell Lysate

Lane 2 : Human brain tissue lysate - total protein ([ab29466](#))

Lysates/proteins at 10 µg per lane.

Secondary

All lanes : Goat polyclonal to Rabbit IgG - H&L - Pre-Adsorbed (HRP) ([ab65484](#)) at 1/3000 dilution

Developed using the ECL technique.

Performed under reducing conditions.

Predicted band size: 47 kDa

Observed band size: 50 kDa

Additional bands at: 35 kDa. We are unsure as to the identity of these extra bands.

Exposure time: 4 minutes

Our Abpromise to you: Quality guaranteed and expert technical support

- Replacement or refund for products not performing as stated on the datasheet
- Valid for 12 months from date of delivery
- Response to your inquiry within 24 hours

- We provide support in Chinese, English, French, German, Japanese and Spanish
- Extensive multi-media technical resources to help you
- We investigate all quality concerns to ensure our products perform to the highest standards

If the product does not perform as described on this datasheet, we will offer a refund or replacement. For full details of the Abpromise, please visit <https://www.abcam.cn/abpromise> or contact our technical team.

Terms and conditions

- Guarantee only valid for products bought direct from Abcam or one of our authorized distributors