

# Anti-FLI1 antibody - C-terminal ab180902

1 References   [2 图像](#)

### 概述

产品名称	Anti-FLI1抗体- C-terminal
描述	兔多克隆抗体to FLI1 - C-terminal
宿主	Rabbit
特异性	At least four isoforms of FLI1 are known to exist; this antibody will detect all four.
经测试应用	适用于: ICC/IF, WB
种属反应性	与反应: Human
免疫原	Synthetic peptide within Human FLI1 (C terminal). The exact sequence is proprietary. 17 amino acid peptide near the C-terminus of Human FLI1. Database link: <a href="#">Q01543</a>
阳性对照	Jurkat whole cell lysate ( <a href="#">ab7899</a> ); HeLa cells.
常规说明	<p>The Life Science industry has been in the grips of a reproducibility crisis for a number of years. Abcam is leading the way in addressing this with our range of recombinant monoclonal antibodies and knockout edited cell lines for gold-standard validation. Please check that this product meets your needs before purchasing.</p> <p>If you have any questions, special requirements or concerns, please send us an inquiry and/or contact our Support team ahead of purchase. Recommended alternatives for this product can be found below, along with publications, customer reviews and Q&amp;As</p>

### 性能

形式	Liquid
存放说明	Shipped at 4°C. Store at +4°C short term (1-2 weeks). Upon delivery aliquot. Store at -20°C long term. Avoid freeze / thaw cycle.
存储溶液	pH: 7.2 Preservative: 0.02% Sodium azide Constituent: 99% PBS
纯度	Immunogen affinity purified
克隆	多克隆
同种型	IgG

## 应用

### The Abpromise guarantee

**Abpromise™** 承诺保证使用 ab180902 于以下的经测试应用

“应用说明”部分 下显示的仅为推荐的起始稀释度;实际最佳的稀释度/浓度应由使用者检定。

应用	Ab 评论	说明
ICC/IF		Use a concentration of 5 µg/ml.
WB		Use a concentration of 0.5 - 1 µg/ml. Detects a band of approximately 52 kDa (predicted molecular weight: 51 kDa).

## 靶标

### 功能

Sequence-specific transcriptional activator. Recognizes the DNA sequence 5'-C[CA]GGAAGT-3'.

### 疾病相关

Defects in FLI1 are a cause of Ewing sarcoma (ES) [MM:612219]. A highly malignant, metastatic, primitive small round cell tumor of bone and soft tissue that affects children and adolescents. It belongs to the Ewing sarcoma family of tumors, a group of morphologically heterogeneous neoplasms that share the same cytogenetic features. They are considered neural tumors derived from cells of the neural crest. Ewing sarcoma represents the less differentiated form of the tumors. Note=A chromosomal aberration involving FLI1 is found in patients with Erwing sarcoma. Translocation t(11;22)(q24;q12) with EWSR1.

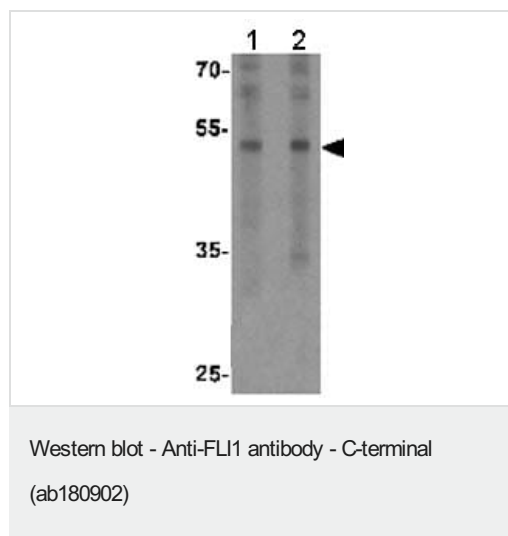
### 序列相似性

Belongs to the ETS family.  
Contains 1 ETS DNA-binding domain.  
Contains 1 PNT (pointed) domain.

### 细胞定位

Nucleus.

## 图片



**Lane 1 :** Anti-FLI1 antibody - C-terminal (ab180902) at 0.5 µg/ml

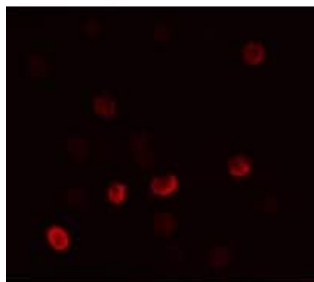
**Lane 2 :** Anti-FLI1 antibody - C-terminal (ab180902) at 1 µg/ml

**All lanes :** Jurkat cell lysate

Lysates/proteins at 15 µg per lane.

**Predicted band size:** 51 kDa

**Additional bands at:** 52 kDa. We are unsure as to the identity of these extra bands.



Immunofluorescent analysis of HeLa cells labeling FLI1 with ab180902 at 5 µg/ml.

Immunocytochemistry/ Immunofluorescence - Anti-FLI1 antibody - C-terminal (ab180902)

**Please note:** All products are "FOR RESEARCH USE ONLY. NOT FOR USE IN DIAGNOSTIC PROCEDURES"

#### Our Abpromise to you: Quality guaranteed and expert technical support

---

- Replacement or refund for products not performing as stated on the datasheet
- Valid for 12 months from date of delivery
- Response to your inquiry within 24 hours
- We provide support in Chinese, English, French, German, Japanese and Spanish
- Extensive multi-media technical resources to help you
- We investigate all quality concerns to ensure our products perform to the highest standards

If the product does not perform as described on this datasheet, we will offer a refund or replacement. For full details of the Abpromise, please visit <https://www.abcam.cn/abpromise> or contact our technical team.

#### Terms and conditions

---

- Guarantee only valid for products bought direct from Abcam or one of our authorized distributors