

Anti-FLCN antibody ab87753

敲除 验证

2 图像

概述

产品名称	Anti-FLCN抗体
描述	兔多克隆抗体to FLCN
宿主	Rabbit
经测试应用	适用于: WB
种属反应性	与反应: Human 预测可用于: Chimpanzee, Gorilla 
免疫原	Synthetic peptide, corresponding to a region within N terminal amino acids 1 - 50 (MNAIVALCHF CELHGPRTL F CTEVLHAPLP QGDGNEDSPG QGEQAE EEEEG) of Human FLCN protein (NP_659434.2)  Run BLAST with  Run BLAST with 
阳性对照	WB: HeLa, HEK293, Daudi and 293T whole cell lysate.
常规说明	<p>The Life Science industry has been in the grips of a reproducibility crisis for a number of years. Abcam is leading the way in addressing this with our range of recombinant monoclonal antibodies and knockout edited cell lines for gold-standard validation. Please check that this product meets your needs before purchasing.</p> <p>If you have any questions, special requirements or concerns, please send us an inquiry and/or contact our Support team ahead of purchase. Recommended alternatives for this product can be found below, along with publications, customer reviews and Q&As</p>

性能

形式	Liquid
存放说明	Shipped at 4°C. Upon delivery aliquot and store at -20°C. Avoid freeze / thaw cycles.
存储溶液	pH: 7 Preservative: 0.09% Sodium azide Constituent: Tris citrate/phosphate
纯度	Immunogen affinity purified
克隆	多克隆
同种型	IgG

应用

The Abpromise guarantee **Abpromise™**承诺保证使用ab87753于以下的经测试应用

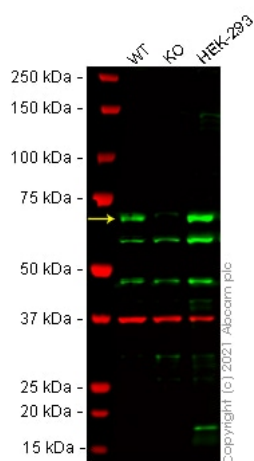
“应用说明”部分 下显示的仅为推荐的起始稀释度;实际最佳的稀释度/浓度应由使用者检定。

应用	Ab评论	说明
WB		1/2000 - 1/10000. Predicted molecular weight: 64 kDa.

靶标

功能	May play a role in the pathogenesis of an uncommon form of kidney cancer through its association with an inherited disorder of the hair follicle (fibrofolliculomas). May be a tumor suppressor. May be involved in colorectal tumorigenesis. May be involved in energy and/or nutrient sensing through the AMPK and mTOR signaling pathways. May regulate phosphorylation of RPS6KB1.
组织特异性	Expressed in most tissues tested, including skin, lung, kidney, heart, testis and stomach.
疾病相关	<p>Defects in FLCN are the cause of Birt-Hogg-Dube syndrome (BHD) [MIM:135150]. BHD is a rare autosomal dominant genodermatosis characterized by hair follicle hamartomas (fibrofolliculomas), kidney tumors, and spontaneous pneumothorax. Fibrofolliculomas are part of the triad of BHD skin lesions that also includes trichodiscomas and acrochordons. Onset of this dermatologic condition is invariably in adulthood. BHD is associated with a variety of histologic types of renal tumors, including chromophobe renal cell carcinoma (RCC), benign renal oncocytoma, clear-cell RCC and papillary type I RCC. Multiple lipomas, angioliipomas, and parathyroid adenomas are also seen in patients affected with this disease. The majority of mutations are predicted to prematurely terminate the protein.</p> <p>Defects in FLCN are in some cases a cause of primary spontaneous pneumothorax (PSP) [MIM:173600]. PSP is a condition in which air is present in the pleural space in the absence of a precipitating event, such as trauma or lung disease. This results in secondary collapse of the lung, either partially or completely, and some degree of hypoxia. PSP is relatively common, with an incidence between 7.4-18/100'000 for men and 1.2-6/100'000 for women and a dose-dependent, increased risk among smokers. Most cases are sporadic, typically occurring in tall, thin men aged 10-30 years and generally while at rest. Familial PSP is rarer and usually is inherited as an autosomal dominant condition with reduced penetrance, although X-linked recessive and autosomal recessive inheritance have also been suggested.</p> <p>Note=Defects in FLCN may be involved in renal cell carcinoma.</p>
序列相似性	Belongs to the folliculin family.
发展阶段	Expressed in fetal lung, kidney, liver, and brain.
翻译后修饰	Phosphorylated. Several different phosphorylated forms exist.
细胞定位	Cytoplasm. Nucleus. Mainly localized in the nucleus. Co-localizes with FNIP1 and FNIP2 in the cytoplasm.

图片



Western blot - Anti-FLCN antibody (ab87753)

All lanes : Anti-FLCN antibody (ab87753) at 1/2000 dilution

Lane 1 : Wild-type HeLa cell lysate

Lane 2 : FLCN knockout HeLa cell lysate

Lane 3 : HEK-293 cell lysate

Lane 4 : Daudi cell lysate

Lysates/proteins at 20 µg per lane.

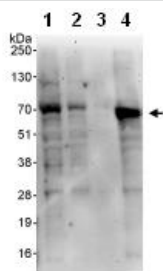
Performed under reducing conditions.

Predicted band size: 64 kDa

Observed band size: 70 kDa

Lanes 1 - 4: Merged signal (red and green). Green - ab87753 observed at 70 kDa. Red - loading control **ab8245** (Mouse anti-GAPDH antibody [6C5]) observed at 37 kDa.

ab87753 was shown to react with FLCN in wild-type HeLa cells in Western blot with loss of signal observed in FLCN knockout cell line **ab265268** (FLCN knockout cell lysate **ab257953**). Wild-type HeLa and FLCN knockout cell lysates were subjected to SDS-PAGE. Membranes were blocked in fluorescent western blot (TBS-based) blocking solution before incubation with ab87753 and **ab8245** (Mouse anti-GAPDH antibody [6C5]) overnight at 4 °C at a 1 in 2000 dilution and a 1 in 20000 dilution respectively. Blots were incubated with Goat anti-Rabbit IgG H&L (IRDye® 800CW) preabsorbed (**ab216773**) and Goat anti-Mouse IgG H&L (IRDye® 680RD) preabsorbed (**ab216776**) secondary antibodies at 1 in 20000 dilution for 1 h at room temperature before imaging.



Western blot - Anti-FLCN antibody (ab87753)

All lanes : Anti-FLCN antibody (ab87753) at 0.1 µg/ml

Lane 1 : HeLa whole cell lysate at 50 µg

Lane 2 : HeLa whole cell lysate at 15 µg

Lane 3 : HeLa whole cell lysate at 5 µg

Lane 4 : 293T whole cell lysate at 50 µg

Developed using the ECL technique.

Predicted band size: 64 kDa

Exposure time: 3 minutes

Please note: All products are "FOR RESEARCH USE ONLY. NOT FOR USE IN DIAGNOSTIC PROCEDURES"

Our Abpromise to you: Quality guaranteed and expert technical support

- Replacement or refund for products not performing as stated on the datasheet
- Valid for 12 months from date of delivery
- Response to your inquiry within 24 hours
- We provide support in Chinese, English, French, German, Japanese and Spanish
- Extensive multi-media technical resources to help you
- We investigate all quality concerns to ensure our products perform to the highest standards

If the product does not perform as described on this datasheet, we will offer a refund or replacement. For full details of the Abpromise, please visit <https://www.abcam.cn/abpromise> or contact our technical team.

Terms and conditions

- Guarantee only valid for products bought direct from Abcam or one of our authorized distributors