

Anti-Flagellin antibody ab93713

★★★★★ 1 Abreviews 27 References 3 图像

概述	
产品名称	Anti-Flagellin抗体
描述	兔多克隆抗体to Flagellin
宿主	Rabbit
特异性	This antibody is specific for bacterial Flagellin (FliC).
经测试应用	适用于: WB, ICC/IF
种属反应性	与反应: Escherichia coli, Salmonella anatum, Salmonella selandia, Salmonella
免疫原	Purified recombinant Flagellin made in BL21 bacteria.
阳性对照	Lysates transfected with purified flagellin, E. Coli total lysate or 293T transfected with recombinant protein.
常规说明	<p>The Life Science industry has been in the grips of a reproducibility crisis for a number of years. Abcam is leading the way in addressing this with our range of recombinant monoclonal antibodies and knockout edited cell lines for gold-standard validation. Please check that this product meets your needs before purchasing.</p> <p>If you have any questions, special requirements or concerns, please send us an inquiry and/or contact our Support team ahead of purchase. Recommended alternatives for this product can be found below, along with publications, customer reviews and Q&amp;As</p>
性能	
形式	Liquid
存放说明	Shipped at 4°C. Upon delivery aliquot and store at -20°C. Avoid repeated freeze / thaw cycles.
存储溶液	Constituent: Whole serum
纯度	Whole antiserum
克隆	多克隆
同种型	IgG
应用	

“应用说明”部分 下显示的仅为推荐的起始稀释度;实际最佳的稀释度/浓度应由使用者检定。

应用	Ab评论	说明
WB	★★★★★ (1)	1/10000 - 1/20000. Detects a band of approximately 60 kDa.
ICC/IF		1/100.

靶标

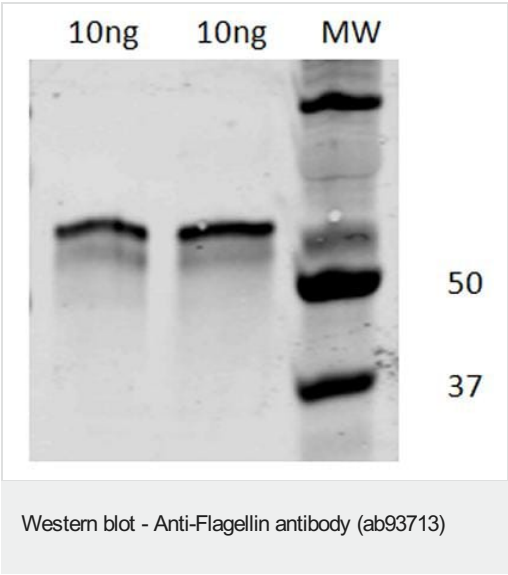
相关性

Flagellin (FliC) is a subunit protein that polymerizes (along with other proteins) to form the filaments of bacterial flagella. Assembly of the bacterial flagellum occurs in a precise, temporal order where the basal component (FlgE, FlgK, and FlgL are assembled inside the bacterial membrane, followed by exportation of the filament cap protein FliD, and secretion of about 20,000 flagellin monomers (FliC) through the channel. FliC monomers are polymerized to form the tail filament. FliC monomers can function as pathogen-associated molecular patterns (PAMPs), and can be detected by host cells through surface-localized toll-like receptor 5 (TLR5) and cytosolic Nod-like receptors (NLRs).

细胞定位

Secreted. Bacterial flagellum.

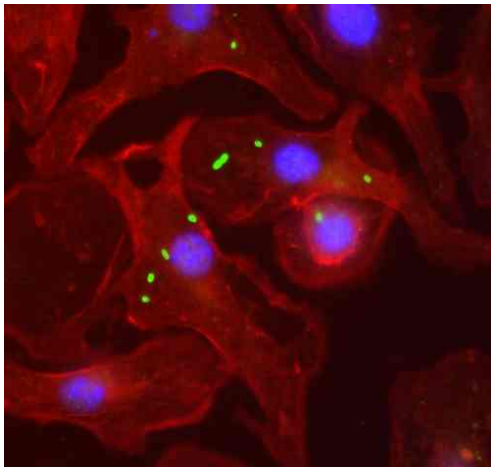
图片



**All lanes :** Anti-Flagellin antibody (ab93713) at 1/10000 dilution

**All lanes :** 293T transfected with recombinant protein

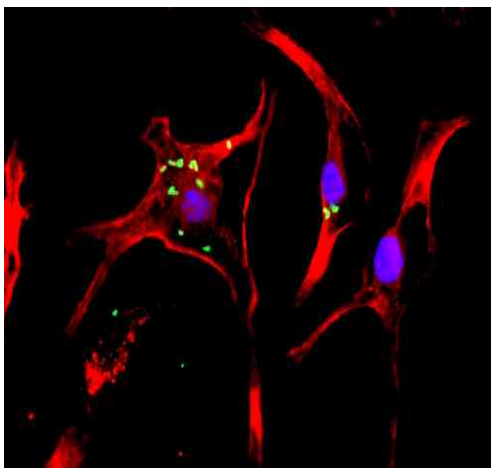
**Observed band size:** 60 kDa



Immunocytochemistry/ Immunofluorescence - Anti-Flagellin antibody (ab93713)

Ab93713 (1:100) staining Flagellin in bone marrow-derived macrophages infected with salmonella.

Flagellin primary antiserum followed by Alexa488 secondary (green). Actin (red) stained with AlexaFluor 594-phalloidin. Nuclei stained with DAPI.



Immunocytochemistry/ Immunofluorescence - Anti-Flagellin antibody (ab93713)

Ab93713 (1:100) staining Flagellin in bone marrow-derived macrophages infected with salmonella.

Flagellin primary antiserum followed by Alexa488 secondary (green). Actin (red) stained with AlexaFluor 594-phalloidin. Nuclei stained with DAPI.

**Please note:** All products are "FOR RESEARCH USE ONLY. NOT FOR USE IN DIAGNOSTIC PROCEDURES"

#### Our Abpromise to you: Quality guaranteed and expert technical support

- Replacement or refund for products not performing as stated on the datasheet

- Valid for 12 months from date of delivery
- Response to your inquiry within 24 hours
- We provide support in Chinese, English, French, German, Japanese and Spanish
- Extensive multi-media technical resources to help you
- We investigate all quality concerns to ensure our products perform to the highest standards

If the product does not perform as described on this datasheet, we will offer a refund or replacement. For full details of the Abpromise, please visit <https://www.abcam.cn/abpromise> or contact our technical team.

#### **Terms and conditions**

---

- Guarantee only valid for products bought direct from Abcam or one of our authorized distributors