

Anti-FKBP51 antibody ab2901

★★★★★ [2 Abreviews](#) [19 References](#) [3 图像](#)

概述

| | |
|-------|---|
| 产品名称 | Anti-FKBP51抗体 |
| 描述 | 兔多克隆抗体to FKBP51 |
| 宿主 | Rabbit |
| 经测试应用 | 适用于: WB |
| 种属反应性 | 与反应: Rat, Human |
| 免疫原 | Synthetic peptide corresponding to Human FKBP51 aa 394-407. Sequence: CQKKAKEHNERDRR Database link: Q13451 (Peptide available as ab4924)  Run BLAST with  Run BLAST with |
| 阳性对照 | WB: K562, HepG2, PC3, HeLa and MCF7 cell lysates; PC-12 and L6 cell lysates; Rat liver, brain, testis and kidney tissue lysates. |
| 常规说明 | <p>The Life Science industry has been in the grips of a reproducibility crisis for a number of years. Abcam is leading the way in addressing this with our range of recombinant monoclonal antibodies and knockout edited cell lines for gold-standard validation. Please check that this product meets your needs before purchasing.</p> <p>If you have any questions, special requirements or concerns, please send us an inquiry and/or contact our Support team ahead of purchase. Recommended alternatives for this product can be found below, along with publications, customer reviews and Q&As</p> |

性能

| | |
|------|--|
| 形式 | Liquid |
| 存放说明 | Shipped at 4°C. Store at +4°C short term (1-2 weeks). Upon delivery aliquot. Store at -20°C or -80°C. Avoid freeze / thaw cycle. |
| 存储溶液 | Preservative: 0.05% Sodium azide Constituents: 0.1% BSA, PBS |
| 纯度 | Immunogen affinity purified |
| 克隆 | 多克隆 |

同种型lgG

应用

The Abpromise guarantee **Abpromise™**承诺保证使用ab2901于以下的经测试应用

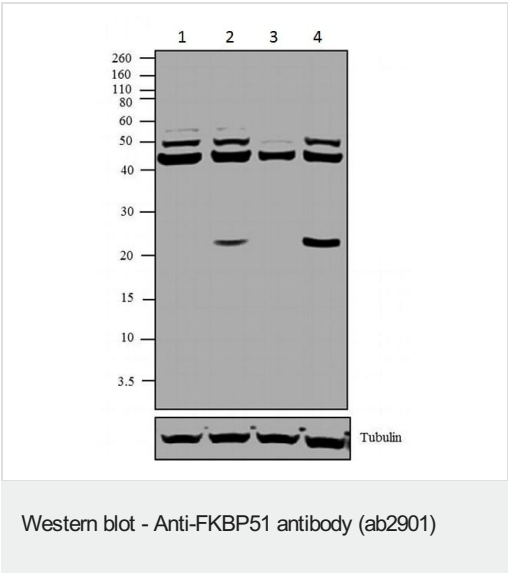
“应用说明”部分 下显示的仅为推荐的起始稀释度;实际最佳的稀释度/浓度应由使用者检定。

| 应用 | Ab评论 | 说明 |
|----|-----------|---|
| WB | ★★★★★ (2) | Use a concentration of 1 µg/ml. Detects a band of approximately 51 kDa. |

靶标

| | |
|-------|--|
| 功能 | Interacts with functionally mature heterooligomeric progesterone receptor complexes along with HSP90 and TEBP. |
| 组织特异性 | Widely expressed, enriched in testis compared to other tissues. |
| 序列相似性 | Contains 2 PPlase FKBP-type domains. Contains 3 TPR repeats. |
| 翻译后修饰 | Phosphorylated upon DNA damage, probably by ATM or ATR. |
| 细胞定位 | Cytoplasm. Nucleus. |

图片



All lanes : Anti-FKBP51 antibody (ab2901) at 2 µg/ml

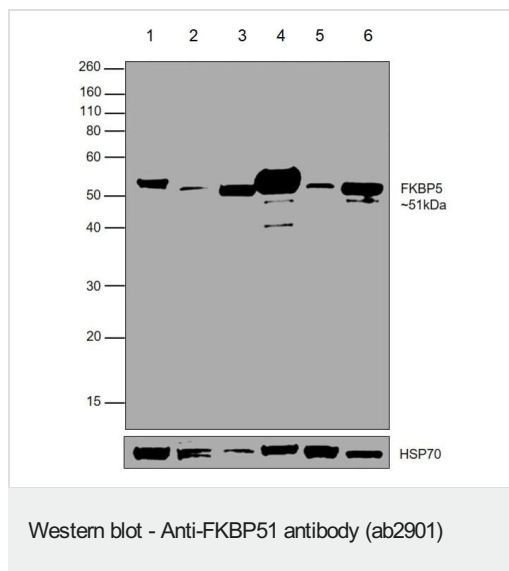
- Lane 1 :** K562 (human chronic myelogenous leukemia cell line from bone marrow) nuclear enriched extract
- Lane 2 :** HepG2 (human liver hepatocellular carcinoma cell line) nuclear enriched extract
- Lane 3 :** PC-3 (human prostate adenocarcinoma cell line) nuclear enriched extract
- Lane 4 :** MCF7 (human breast adenocarcinoma cell line) nuclear enriched extract

Lysates/proteins at 30 µg per lane.

Secondary

All lanes : Goat anti-Rabbit IgG (H+L) at 1/2500 dilution

Approximately 51 and 45 kDa bands corresponding to FKBP51 were observed across cell lines tested



All lanes : Anti-FKBP51 antibody (ab2901) at 1 µg/ml

Lane 1 : PC-12 (Rat adrenal gland pheochromocytoma cell line) whole cell lysate

Lane 2 : L6 (Rat skeletal muscle cell line) whole cell lysate

Lane 3 : Rat liver tissue lysate

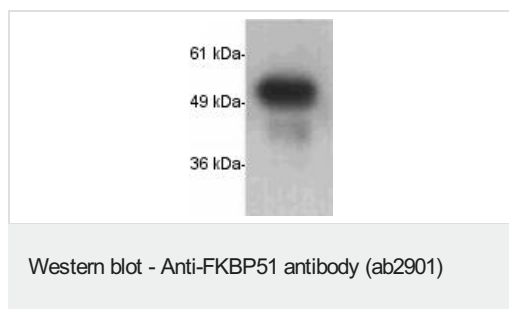
Lane 4 : Rat brain tissue lysate

Lane 5 : Rat testis tissue lysate

Lane 6 : Rat kidney tissue lysate

Lysates/proteins at 30 µg per lane.

Western blot was performed using ab2901 and a 51kDa band corresponding to FKBP5 was observed across all the tested cell lines and tissues. Whole cell extracts were electrophoresed using NuPAGE™ 10% Bis-Tris Protein Gel . Resolved proteins were then transferred onto a Nitrocellulose membrane by iBlot® 2 Dry Blotting System. The blot was probed with the primary antibody (1µg/mL) and detected by chemiluminescence with Goat anti-Rabbit IgG (H+L) Superclonal™ Recombinant Secondary Antibody, HRP using the iBright FL 1000. Chemiluminescent detection was performed using Novex® ECL Reagent Kit.



Anti-FKBP51 antibody (ab2901) at 2 µg/ml + HeLa (human epithelial cell line from cervix adenocarcinoma) cell lysate

Please note: All products are "FOR RESEARCH USE ONLY. NOT FOR USE IN DIAGNOSTIC PROCEDURES"

Our Abpromise to you: Quality guaranteed and expert technical support

- Replacement or refund for products not performing as stated on the datasheet
- Valid for 12 months from date of delivery
- Response to your inquiry within 24 hours
- We provide support in Chinese, English, French, German, Japanese and Spanish
- Extensive multi-media technical resources to help you
- We investigate all quality concerns to ensure our products perform to the highest standards

If the product does not perform as described on this datasheet, we will offer a refund or replacement. For full details of the Abpromise, please visit <https://www.abcam.cn/abpromise> or contact our technical team.

Terms and conditions

- Guarantee only valid for products bought direct from Abcam or one of our authorized distributors