


# Anti-FKBP15 antibody ab14432

★★★★★ [4 Abreviews](#) [3 References](#) [2 图像](#)

### 概述

产品名称	Anti-FKBP15抗体
描述	兔多克隆抗体to FKBP15
宿主	Rabbit
经测试应用	适用于: WB, IP
种属反应性	与反应: Mouse, Human 预测可用于: Horse, Cow, Chimpanzee, Rhesus monkey, Gorilla, Orangutan 
免疫原	Synthetic peptide corresponding to Human FKBP135 aa 50-150. Database link: <a href="#">Q5T1M5</a>
阳性对照	WB: HeLa, HEK-293T and NIH/3T3 whole cell lysates. IP: HeLa whole cell lysate.
常规说明	<p>The Life Science industry has been in the grips of a reproducibility crisis for a number of years. Abcam is leading the way in addressing this with our range of recombinant monoclonal antibodies and knockout edited cell lines for gold-standard validation. Please check that this product meets your needs before purchasing.</p> <p>If you have any questions, special requirements or concerns, please send us an inquiry and/or contact our Support team ahead of purchase. Recommended alternatives for this product can be found below, along with publications, customer reviews and Q&amp;As</p>

### 性能

形式	Liquid
存放说明	Shipped at 4°C. Upon delivery aliquot and store at -20°C. Avoid freeze / thaw cycles.
存储溶液	pH: 7 Preservative: 0.1% Sodium azide Constituents: 0.021% PBS, 1.764% Sodium citrate, 1.815% Tris
纯度	Immunogen affinity purified
纯化说明	Antibody was purified using an epitope specific to FKBP-15 immobilized on solid support.
克隆	多克隆
同种型	IgG

The Abpromise guarantee      **Abpromise™**承诺保证使用ab14432于以下的经测试应用

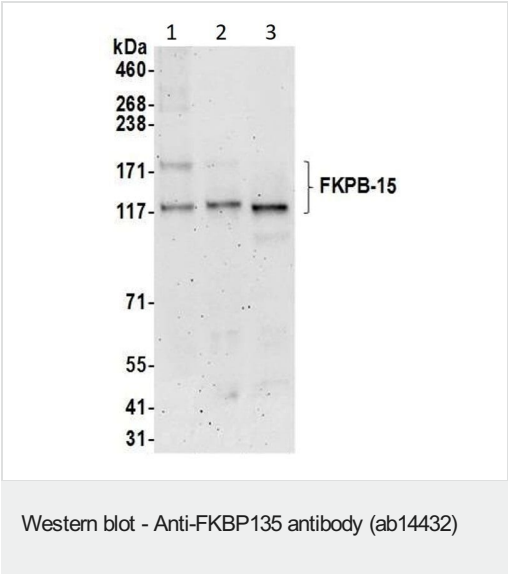
“应用说明”部分 下显示的仅为推荐的起始稀释度;实际最佳的稀释度/浓度应由使用者检定。

应用	Ab评论	说明
WB		1/2000 - 1/10000. Predicted molecular weight: 135 kDa.
IP		Use at 2-10 µg/mg of lysate.

靶标

功能	May be involved in the cytoskeletal organization of neuronal growth cones. Seems to be inactive as a PPlase (By similarity). Involved in the transport of early endosomes at the level of transition between microfilament-based and microtubule-based movement.
序列相似性	Belongs to the FKBP-type PPlase family. Contains 1 PPlase FKBP-type domain.
结构域	The PPlase FKBP-type domain seems to be inactive both for FK506-binding and enzymatic activity. The central coiled-coil region is responsible for association with early endosomes.
细胞定位	Cytoplasm. Cell projection, axon. Early endosome. Present in axons and neuronal growth cones.

图片



**All lanes :** Anti-FKBP15 antibody (ab14432) at 0.1 µg/ml

**Lane 1 :** HeLa (Human cervix adenocarcinoma epithelial cell) whole cell lysate

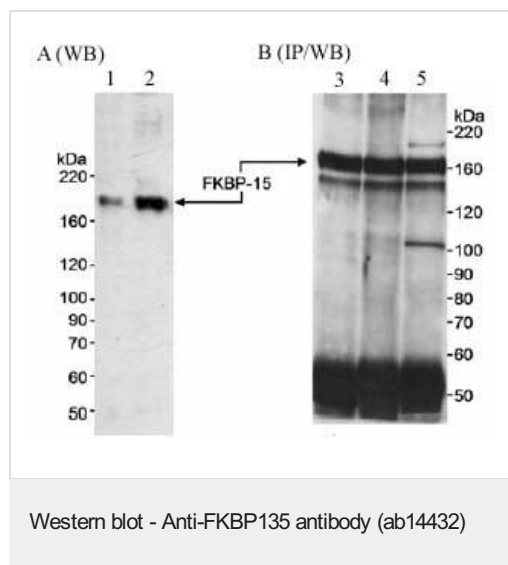
**Lane 2 :** HEK-293T (Human epithelial cell line from embryonic kidney transformed with large T antigen) whole cell lysate

**Lane 3 :** NIH/3T3 (Mouse embryonic fibroblast cell line) whole cell lysate

Lysates/proteins at 50 µg per lane.

**Predicted band size:** 135 kDa

**Exposure time:** 3 minutes



**All lanes :** Anti-FKBP15 antibody (ab14432) at 0.2 µg/ml

**Lane 1 :** Nuclear lysates prepared from HeLa cells at 5 µg

**Lane 2 :** Nuclear lysates prepared from HeLa cells at 20 µg

**Lanes 3-5 :** Nuclear lysates prepared from HeLa cells at 1 mg/ml

**Predicted band size:** 135 kDa

Antibodies: ab14432 used at 0.2 mcg/ml for WB in A and B and 2 mcg/mg extract for IP (B), **ab14433** and **ab14434** used at 2 mcg/mg extract for IP. Detection: Chemiluminescence with an exposure time of 25 minutes (A) and 10 minutes (B).

In figure B the Immunoprecipitation was done using ab14432 (Lane 3), **ab14433** (Lane 4) and **ab14434** (Lane 5) at 2µg/mg of extract.

**Please note:** All products are "FOR RESEARCH USE ONLY. NOT FOR USE IN DIAGNOSTIC PROCEDURES"

### Our Abpromise to you: Quality guaranteed and expert technical support

- Replacement or refund for products not performing as stated on the datasheet
- Valid for 12 months from date of delivery
- Response to your inquiry within 24 hours
- We provide support in Chinese, English, French, German, Japanese and Spanish
- Extensive multi-media technical resources to help you
- We investigate all quality concerns to ensure our products perform to the highest standards

If the product does not perform as described on this datasheet, we will offer a refund or replacement. For full details of the Abpromise, please visit <https://www.abcam.cn/abpromise> or contact our technical team.

### Terms and conditions

- Guarantee only valid for products bought direct from Abcam or one of our authorized distributors