


Anti-FKBP12 antibody [EPR3888] ab92459

敲除验证
重组
RabMAb

★★★★☆
[2 Abreviews](#)
[1 References](#)
[4 图像](#)

概述

产品名称	Anti-FKBP12抗体[EPR3888]
描述	兔单克隆抗体[EPR3888] to FKBP12
宿主	Rabbit
经测试应用	适用于: WB 不适用于: Flow Cyt, ICC/IF, IHC-P or IP
种属反应性	与反应: Human 预测可用于: Mouse, Rat 
免疫原	Synthetic peptide within Human FKBP12 aa 50-150 (C terminal). The exact sequence is proprietary.
阳性对照	U937 and SH-SY5Y cell lysates. Fetal brain, human brain lysate, mouse heart lysate and rat heart tissue lysates.
常规说明	<p>This product is a recombinant monoclonal antibody, which offers several advantages including:</p> <ul style="list-style-type: none"> - High batch-to-batch consistency and reproducibility - Improved sensitivity and specificity - Long-term security of supply - Animal-free production <p>For more information see here.</p> <p>Our RabMAb[®] technology is a patented hybridoma-based technology for making rabbit monoclonal antibodies. For details on our patents, please refer to RabMAb[®] patents.</p>

性能

形式	Liquid
存放说明	Shipped at 4°C. Store at -20°C. Stable for 12 months at -20°C.
存储溶液	pH: 7.20 Preservative: 0.01% Sodium azide Constituents: PBS, 40% Glycerol (glycerin, glycerine), 0.05% BSA
纯度	Protein A purified
克隆	单克隆

克隆编号EPR3888

同种型IgG

应用

The Abpromise guarantee Abpromise™承诺保证使用ab92459于以下的经测试应用

“应用说明”部分 下显示的仅为推荐的起始稀释度;实际最佳的稀释度/浓度应由使用者检定。

应用	Ab评论	说明
WB	★★★★★ (2)	1/2000. Predicted molecular weight: 12 kDa. For unpurified use at 1/10000 - 1/50000

应用说明Is unsuitable for Flow Cyt, ICC/IF, IHC-P or IP.

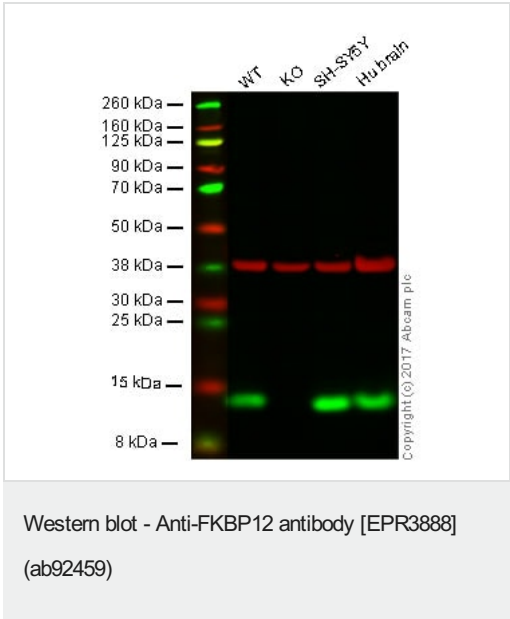
靶标

功能May play a role in modulation of ryanodine receptor isoform-1 (RYR-1), a component of the calcium release channel of skeletal muscle sarcoplasmic reticulum. There are four molecules of FKBP12 per skeletal muscle RYR. PPlases accelerate the folding of proteins. It catalyzes the cis-trans isomerization of proline imidic peptide bonds in oligopeptides.

序列相似性Belongs to the FKBP-type PPlase family. FKBP1 subfamily.
Contains 1 PPlase FKBP-type domain.

细胞定位Cytoplasm.

图片



Lane 1: Wild-type HAP1 whole cell lysate (20 µg)

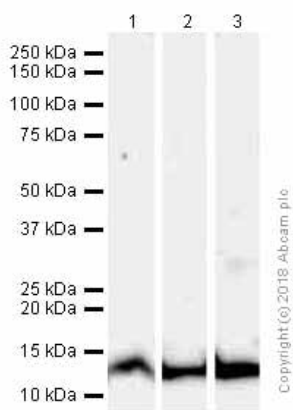
Lane 2: FKBP12 knockout HAP1 whole cell lysate (20 µg)

Lane 3: SH-SY5Y whole cell lysate (20 µg)

Lane 4: Human brain whole cell lysate (20 µg)

Lanes 1 - 4: Merged signal (red and green). Green - ab92459 observed at 12 kDa. Red - loading control, [ab9484](#), observed at 37 kDa.

ab92459 was shown to specifically react with FKBP12 in wild-type HAP1 cells as signal was lost in FKBP12 knockout cells. Wild-type and FKBP12 knockout samples were subjected to SDS-PAGE. Ab92459 and [ab9484](#) (Mouse anti-GAPDH loading control) were incubated overnight at 4°C at 1/10000 dilution and 1/20000 dilution respectively. Blots were developed with Goat anti-Rabbit IgG H&L (IRDye® 800CW) preabsorbed [ab216773](#) and Goat anti-Mouse IgG H&L (IRDye® 680RD) preabsorbed [ab216776](#) secondary antibodies at 1/20000 dilution for 1 hour at room temperature before imaging.



Western blot - Anti-FKBP12 antibody [EPR3888]
(ab92459)

All lanes : Anti-FKBP12 antibody [EPR3888] (ab92459) at 1/2000 dilution

Lane 1 : Human brain lysate

Lane 2 : Mouse heart lysate

Lane 3 : Rat heart lysate

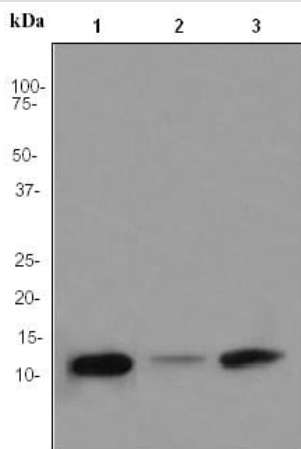
Lysates/proteins at 20 µg per lane.

Secondary

All lanes : Goat Anti-Rabbit IgG (HRP) with minimal cross-reactivity with human IgG at 1/2000 dilution

Predicted band size: 12 kDa

Observed band size: 12 kDa



Western blot - Anti-FKBP12 antibody [EPR3888]
(ab92459)

All lanes : Anti-FKBP12 antibody [EPR3888] (ab92459) at 1/10000 dilution

Lane 1 : Fetal brain lysate

Lane 2 : U937 cell lysate

Lane 3 : SH-SY5Y cell lysate

Lysates/proteins at 10 µg per lane.

Secondary

All lanes : HRP labelled goat anti-rabbit IgG at 1/2000 dilution

Predicted band size: 12 kDa

Why choose a recombinant antibody?



Research with confidence
Consistent and reproducible results



Long-term and scalable supply
Recombinant technology



Success from the first experiment
Confirmed specificity



Ethical standards compliant
Animal-free production

Anti-FKBP12 antibody [EPR3888] (ab92459)

Please note: All products are "FOR RESEARCH USE ONLY. NOT FOR USE IN DIAGNOSTIC PROCEDURES"

Our Abpromise to you: Quality guaranteed and expert technical support

- Replacement or refund for products not performing as stated on the datasheet
- Valid for 12 months from date of delivery
- Response to your inquiry within 24 hours
- We provide support in Chinese, English, French, German, Japanese and Spanish
- Extensive multi-media technical resources to help you
- We investigate all quality concerns to ensure our products perform to the highest standards

If the product does not perform as described on this datasheet, we will offer a refund or replacement. For full details of the Abpromise, please visit <https://www.abcam.cn/abpromise> or contact our technical team.

Terms and conditions

- Guarantee only valid for products bought direct from Abcam or one of our authorized distributors