


FITC Anti-TCR alpha + TCR beta antibody [R73] ab176542

1 图像

概述

产品名称	FITC荧光Anti-TCR alpha + TCR beta抗体[R73]
描述	FITC荧光小鼠单克隆抗体[R73] to TCR alpha + TCR beta
宿主	Mouse
偶联物	FITC. Ex: 493nm, Em: 528nm
特异性	ab176542 recognizes TCR alpha/beta, the dominant subtype of T cell receptor expressed in peripheral blood.
经测试应用	适用于: Flow Cyt
种属反应性	与反应: Rat 预测可用于: Non human primates 
免疫原	Tissue, cells or virus corresponding to Rat TCR alpha + TCR beta. Rat T blasts and erythrocytes. Database link: 24820
常规说明	<p>The Life Science industry has been in the grips of a reproducibility crisis for a number of years. Abcam is leading the way in addressing this with our range of recombinant monoclonal antibodies and knockout edited cell lines for gold-standard validation. Please check that this product meets your needs before purchasing.</p> <p>If you have any questions, special requirements or concerns, please send us an inquiry and/or contact our Support team ahead of purchase. Recommended alternatives for this product can be found below, along with publications, customer reviews and Q&As</p>

性能

形式	Liquid
存放说明	Shipped at 4°C. Store at +4°C. Store In the Dark.
存储溶液	pH: 7.40 Preservative: 0.098% Sodium azide Constituent: 99% PBS
纯度	Size exclusion
纯化说明	This conjugate is made from a highly purified antibody (>95% by SDS-PAGE); free of unconjugated FITC.
克隆	单克隆

克隆编号 R73
同种型 IgG1

应用

The Abpromise guarantee **Abpromise™**承诺保证使用ab176542于以下的经测试应用

“应用说明”部分 下显示的仅为推荐的起始稀释度;实际最佳的稀释度/浓度应由使用者检定。

应用	Ab评论	说明
Flow Cyt		Use a concentration of 1 - 3 µg/ml.

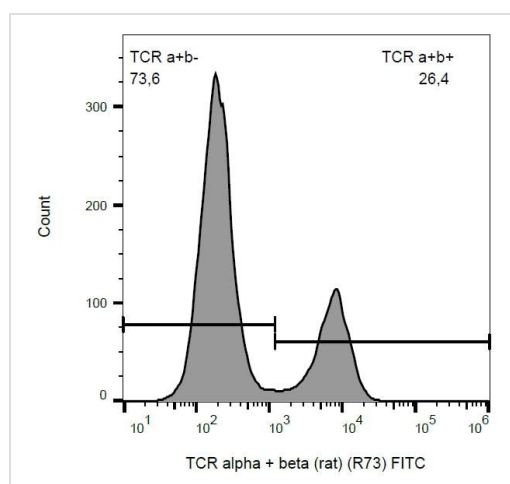
靶标

相关性

The receptors on T cells consist of immunoglobulin like integral membrane glycoproteins containing 2 polypeptide subunits, alpha and beta, of similar molecular weight, 40 to 55 kD in the human. Like the immunoglobulins of the B cells, each T cell receptor subunit has, external to the cell membrane, an N terminal variable domain and a C terminal constant domain. T cell receptors recognise foreign antigens which have been processed as small peptides and bound to major histocompatibility complex molecules at the surface of antigen presenting cells. Each T cell receptor is a dimer consisting of one alpha and one beta chain or one delta and one gamma chain. In a single cell, the T cell receptor loci are rearranged and expressed in the order delta, gamma, beta, and alpha. If both delta and gamma rearrangements produce functional chains, the cell expresses delta and gamma. If not, the cell proceeds to rearrange the beta and alpha loci.

细胞定位 Type I membrane protein.

图片



Flow cytometry analysis (surface staining) of rat splenocytes with ab176542

Flow Cytometry - FITC Anti-TCR alpha + TCR beta antibody [R73] (ab176542)

Please note: All products are "FOR RESEARCH USE ONLY. NOT FOR USE IN DIAGNOSTIC PROCEDURES"

Our Abpromise to you: Quality guaranteed and expert technical support

- Replacement or refund for products not performing as stated on the datasheet
- Valid for 12 months from date of delivery
- Response to your inquiry within 24 hours

- We provide support in Chinese, English, French, German, Japanese and Spanish
- Extensive multi-media technical resources to help you
- We investigate all quality concerns to ensure our products perform to the highest standards

If the product does not perform as described on this datasheet, we will offer a refund or replacement. For full details of the Abpromise, please visit <https://www.abcam.cn/abpromise> or contact our technical team.

Terms and conditions

- Guarantee only valid for products bought direct from Abcam or one of our authorized distributors