

FITC Anti-RFP antibody ab34764

★★★★★ [1 Abreviews](#) [6 References](#) [1 图像](#)

概述

产品名称	FITC荧光Anti-RFP抗体
描述	FITC荧光兔多克隆抗体to RFP
宿主	Rabbit
偶联物	FITC. Ex: 493nm, Em: 528nm
特异性	ab34764 detects RFP tagged proteins. No reaction was observed against serum proteins.Expect reactivity against RFP and its variants: mCherry, tdTomato, mBanana, mOrange, mPlum, mOrange and mStrawberry".
经测试应用	适用于: ELISA, ICC/IF, Flow Cyt, WB
种属反应性	与反应: Species independent
免疫原	Fusion protein corresponding to RFP. derived from the mushroom polyp coral Discosoma
常规说明	3.4 moles FITC per mole of rabbit IgG. The Life Science industry has been in the grips of a reproducibility crisis for a number of years. Abcam is leading the way in addressing this with our range of recombinant monoclonal antibodies and knockout edited cell lines for gold-standard validation. Please check that this product meets your needs before purchasing. If you have any questions, special requirements or concerns, please send us an inquiry and/or contact our Support team ahead of purchase. Recommended alternatives for this product can be found below, along with publications, customer reviews and Q&As

性能

形式	Liquid
存放说明	Shipped at 4°C. Store at +4°C.
存储溶液	pH: 6.50 Preservative: 0.01% Sodium azide Constituents: 1% BSA, 0.42% Tripotassium orthophosphate, 0.87% Sodium chloride
纯度	Immunogen affinity purified
纯化说明	affinity purification was followed by solid phase adsorption to remove any unwanted reactivities.
克隆	多克隆
同种型	IgG

应用

The Abpromise guarantee

Abpromise™承诺保证使用ab34764于以下的经测试应用

“应用说明”部分 下显示的仅为推荐的起始稀释度;实际最佳的稀释度/浓度应由使用者检定。

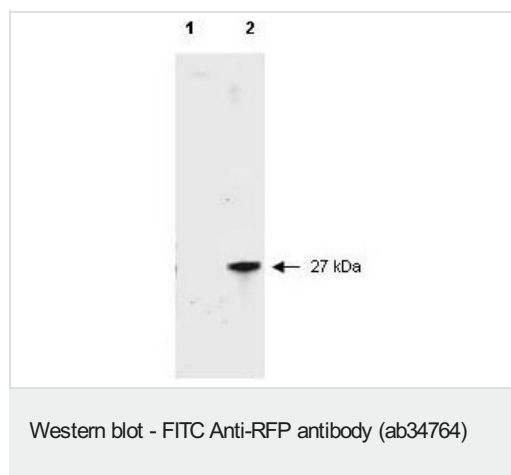
应用	Ab评论	说明
ELISA		Use at an assay dependent concentration.
ICC/IF	★★★★★ (1)	Use at an assay dependent concentration.
Flow Cyt		Use at an assay dependent concentration. ab37406 - Rabbit polyclonal IgG, is suitable for use as an isotype control with this antibody.
WB		1/10000. Detects a band of approximately 27 kDa.

靶标

相关性

Fluorescent proteins have become a useful and ubiquitous tool for making chimeric proteins, where they function as a fluorescent protein tag. Typically they tolerate N- and C-terminal fusion to a broad variety of proteins. They have been expressed in most known cell types and are used as a noninvasive fluorescent marker in living cells and organisms. They enable a wide range of applications where they have functioned as a cell lineage tracer, reporter of gene expression, or as a measure of protein-protein interactions.

图片



All lanes : FITC Anti-RFP antibody (ab34764) at 1/2500 dilution

Lane 1 : HeLa cell extract

Lane 2 : HeLa lysate

Lysates/proteins at 10 µg per lane.

Secondary

All lanes : Goat-a-Rabbit IgG [H&L] at 1/5000 dilution

Please note: All products are "FOR RESEARCH USE ONLY. NOT FOR USE IN DIAGNOSTIC PROCEDURES"

Our Abpromise to you: Quality guaranteed and expert technical support

- Replacement or refund for products not performing as stated on the datasheet
- Valid for 12 months from date of delivery
- Response to your inquiry within 24 hours
- We provide support in Chinese, English, French, German, Japanese and Spanish
- Extensive multi-media technical resources to help you
- We investigate all quality concerns to ensure our products perform to the highest standards

If the product does not perform as described on this datasheet, we will offer a refund or replacement. For full details of the Abpromise, please visit <https://www.abcam.cn/abpromise> or contact our technical team.

Terms and conditions

- Guarantee only valid for products bought direct from Abcam or one of our authorized distributors