

FITC Anti-PD1 antibody [RMP1-30] ab93579

1 图像

概述

产品名称	FITC荧光Anti-PD1抗体[RMP1-30]
描述	FITC荧光大鼠单克隆抗体[RMP1-30] to PD1
宿主	Rat
偶联物	FITC. Ex: 493nm, Em: 528nm
经测试应用	适用于: Flow Cyt
种属反应性	与反应: Mouse
免疫原	Tissue, cells or virus corresponding to Mouse PD1. Mouse PD1 transfected BHK cells 2
阳性对照	3-day ConA activated BALB/c splenocytes
常规说明	<p>ab93579 does not block the binding of either B7-H1-Ig or B7-DC-Ig to PD-1 transfectants.</p> <p>The Life Science industry has been in the grips of a reproducibility crisis for a number of years. Abcam is leading the way in addressing this with our range of recombinant monoclonal antibodies and knockout edited cell lines for gold-standard validation. Please check that this product meets your needs before purchasing.</p> <p>If you have any questions, special requirements or concerns, please send us an inquiry and/or contact our Support team ahead of purchase. Recommended alternatives for this product can be found below, along with publications, customer reviews and Q&As</p>

性能

形式	Liquid
存放说明	Shipped at 4°C. Store at +4°C.
存储溶液	<p>pH: 7.20</p> <p>Preservative: 0.09% Sodium azide</p> <p>Constituents: 0.87% Sodium chloride, PBS</p>
纯度	Protein G purified
Primary antibody说明	ab93579 does not block the binding of either B7-H1-Ig or B7-DC-Ig to PD-1 transfectants.
克隆	单克隆
克隆编号	RMP1-30

同种型

lgG2b

轻链类型

kappa

应用

The Abpromise guarantee

Abpromise™承诺保证使用ab93579于以下的经测试应用

“应用说明”部分 下显示的仅为推荐的起始稀释度;实际最佳的稀释度/浓度应由使用者检定。

应用	Ab评论	说明
Flow Cyt		Use 0.5µg for 10 ⁵⁻⁸ cells. Use 0.5µg for 10 ⁵⁻⁸ cells in 100µl.

靶标

功能

Possible cell death inducer, in association with other factors.

疾病相关

Genetic variation in PDCD1 is associated with susceptibility to systemic lupus erythematosus type 2 (SLEB2) [MIM:605218]. Systemic lupus erythematosus is a chronic, inflammatory and often febrile multisystemic disorder of connective tissue. It affects principally the skin, joints, kidneys and serosal membranes. It is thought to represent a failure of the regulatory mechanisms of the autoimmune system.

序列相似性

Contains 1 Ig-like V-type (immunoglobulin-like) domain.

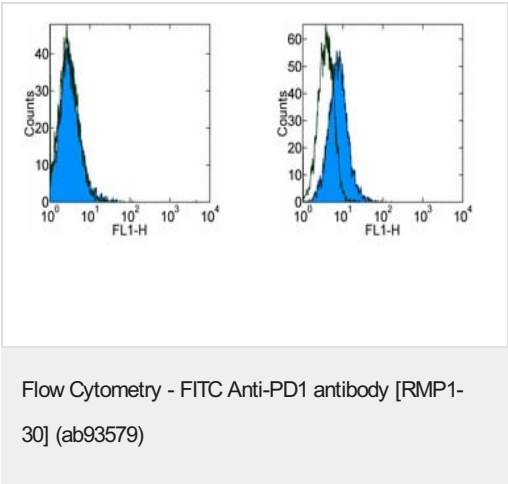
发展阶段

Induced at programmed cell death.

细胞定位

Membrane.

图片



Staining of 3-day unstimulated (left) and 3-day ConA activated (right) BALB/c splenocytes with 0.25 µg of FITC Rat IgG2b isotype control (open histogram), or 0.25 µg of ab93579 (colored histogram). Total viable cells were used for analysis.

Please note: All products are "FOR RESEARCH USE ONLY. NOT FOR USE IN DIAGNOSTIC PROCEDURES"

Our Abpromise to you: Quality guaranteed and expert technical support

- Replacement or refund for products not performing as stated on the datasheet
- Valid for 12 months from date of delivery
- Response to your inquiry within 24 hours

- We provide support in Chinese, English, French, German, Japanese and Spanish
- Extensive multi-media technical resources to help you
- We investigate all quality concerns to ensure our products perform to the highest standards

If the product does not perform as described on this datasheet, we will offer a refund or replacement. For full details of the Abpromise, please visit <https://www.abcam.cn/abpromise> or contact our technical team.

Terms and conditions

- Guarantee only valid for products bought direct from Abcam or one of our authorized distributors