

FITC Anti-Ly6g antibody [RB6-8C5] ab25024

★★★★★ [6 Abreviews](#) [19 References](#) [4 图像](#)

概述

| | |
|-------|---|
| 产品名称 | FITC荧光Anti-Ly6g抗体[RB6-8C5] |
| 描述 | FITC荧光大鼠单克隆抗体[RB6-8C5] to Ly6g |
| 宿主 | Rat |
| 偶联物 | FITC. Ex: 493nm, Em: 528nm |
| 特异性 | ab25024 recognises mouse Mouse Ly-6G. |
| 经测试应用 | 适用于: Flow Cyt |
| 种属反应性 | 与反应: Mouse |
| 免疫原 | Tissue, cells or virus corresponding to Ly6g. Mouse granulocytes |
| 阳性对照 | Rat IgG2b (FITC) isotype control |
| 常规说明 | <p>The Life Science industry has been in the grips of a reproducibility crisis for a number of years. Abcam is leading the way in addressing this with our range of recombinant monoclonal antibodies and knockout edited cell lines for gold-standard validation. Please check that this product meets your needs before purchasing.</p> <p>If you have any questions, special requirements or concerns, please send us an inquiry and/or contact our Support team ahead of purchase. Recommended alternatives for this product can be found below, along with publications, customer reviews and Q&As</p> |

性能

| | |
|------|---|
| 形式 | Liquid |
| 存放说明 | Shipped at 4°C. Store at +4°C. |
| 存储溶液 | <p>pH: 7.20</p> <p>Preservative: 0.09% Sodium azide</p> <p>Constituents: 0.14% Monobasic dihydrogen sodium phosphate, 0.87% Sodium chloride, 0.1% Gelatin</p> |
| 纯度 | Affinity purified |
| 克隆 | 单克隆 |
| 克隆编号 | RB6-8C5 |
| 同种型 | IgG2b |
| 轻链类型 | kappa |

应用

The Abpromise guarantee

“应用说明”部分 下显示的仅为推荐的起始稀释度;实际最佳的稀释度/浓度应由使用者检定。

Abpromise™承诺保证使用ab25024于以下的经测试应用

| 应用 | Ab评论 | 说明 |
|----------|-----------|---|
| Flow Cyt | ★★★★★ (5) | 1/100. ab136125 - Rat monoclonal IgG2b, is suitable for use as an isotype control with this antibody. |

靶标

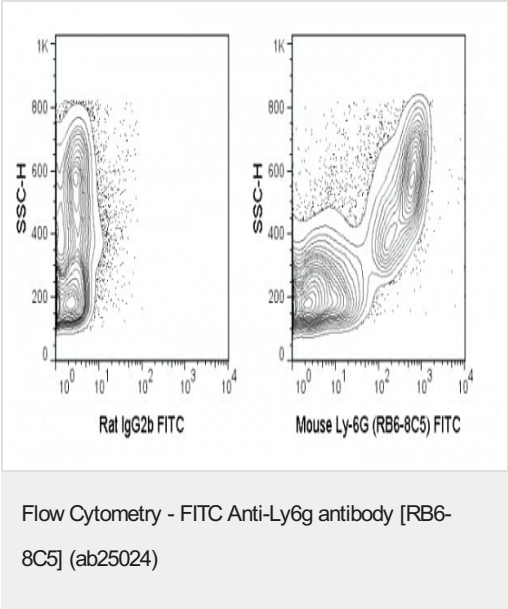
相关性

Ly6G is a GPI-anchored protein, that is also known as the myeloid differentiation antigen Gr1. The antigen is transiently expressed on monocytes in the bone marrow. The level of antigen expression in the bone marrow directly correlates with granulocyte differentiation and maturation. Ly6G is expressed predominantly on neutrophils, also in a subset of eosinophils, differentiating pre-monocytes, and plasmacytoid dendritic cells.

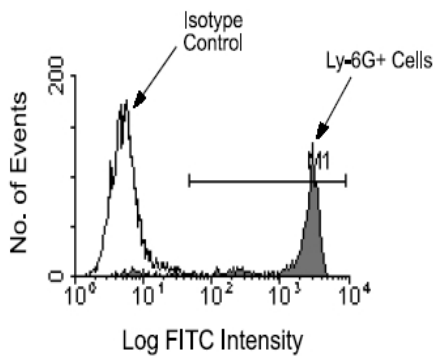
细胞定位

Attached to the membrane by a GPI-anchor.

图片

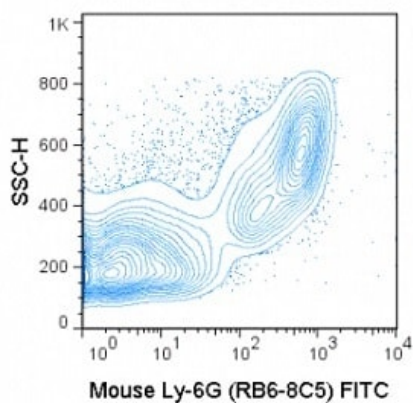


Flow Cytometry analysis of C57Bl/6 bone marrow cells labeling Ly6g with ab25024 0.5µg (right panel), Rat IgG2b (FITC) isotype control at 0.5µg (left panel).



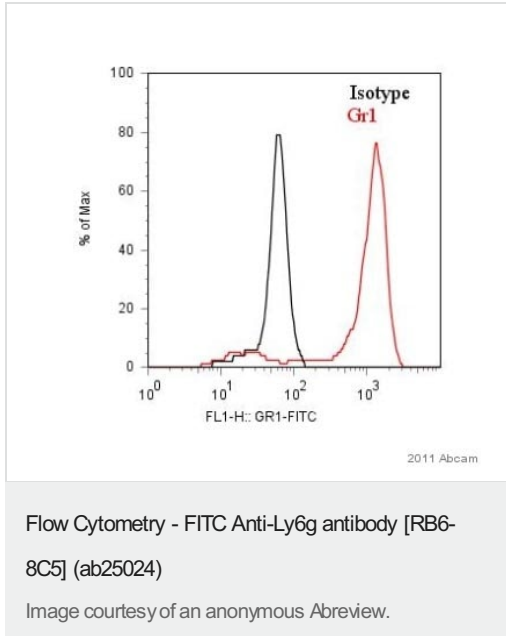
Flow Cytometry - FITC Anti-Ly6g antibody [RB6-8C5] (ab25024)

BALB/c bone marrow cells were stained with either rat IgG2b-FITC (as an isotype control) or rat anti-mouse Ly-6G-FITC (ab25024) at a concentration of $1\mu\text{g}/10^6$ cells. Large cells were then gated and analyzed on a flow cytometer.



Flow Cytometry - FITC Anti-Ly6g antibody [RB6-8C5] (ab25024)

Flow Cytometry analysis of C57Bl/6 bone marrow cells labeling Ly6g with ab25024 at $0.5\mu\text{g}$.



ab25024 at a 1/100 dilution detecting Ly6g (Gr1) in murine blood cells by Flow Cytometry. Gating strategy was for monocytes.

Please note: All products are "FOR RESEARCH USE ONLY. NOT FOR USE IN DIAGNOSTIC PROCEDURES"

Our Abpromise to you: Quality guaranteed and expert technical support

- Replacement or refund for products not performing as stated on the datasheet
- Valid for 12 months from date of delivery
- Response to your inquiry within 24 hours
- We provide support in Chinese, English, French, German, Japanese and Spanish
- Extensive multi-media technical resources to help you
- We investigate all quality concerns to ensure our products perform to the highest standards

If the product does not perform as described on this datasheet, we will offer a refund or replacement. For full details of the Abpromise, please visit <https://www.abcam.cn/abpromise> or contact our technical team.

Terms and conditions

- Guarantee only valid for products bought direct from Abcam or one of our authorized distributors