

FITC Anti-Integrin alpha 2 antibody [AK7] ab30486

4 References [1 图像](#)

概述

产品名称	FITC荧光Anti-Integrin alpha 2抗体[AK7]
描述	FITC荧光小鼠单克隆抗体[AK7] to Integrin alpha 2
宿主	Mouse
偶联物	FITC. Ex: 493nm, Em: 528nm
特异性	ab30486 recognises the integrin alpha 2 subunit, which is a 160kD glycoprotein that non covalently associates with the 130kD integrin beta 1 subunit (CD29) to form the VLA2 complex.
经测试应用	适用于: Flow Cyt
种属反应性	与反应: Human, Monkey
免疫原	The details of the immunogen for this antibody are not available.
常规说明	<p>The Life Science industry has been in the grips of a reproducibility crisis for a number of years. Abcam is leading the way in addressing this with our range of recombinant monoclonal antibodies and knockout edited cell lines for gold-standard validation. Please check that this product meets your needs before purchasing.</p> <p>If you have any questions, special requirements or concerns, please send us an inquiry and/or contact our Support team ahead of purchase. Recommended alternatives for this product can be found below, along with publications, customer reviews and Q&As</p>

性能

形式	Liquid
存放说明	Shipped at 4°C. Store at +4°C.
存储溶液	<p>pH: 7.40</p> <p>Preservative: 0.09% Sodium azide</p> <p>Constituents: PBS, 1% BSA</p>
纯度	Protein G purified
克隆	单克隆
克隆编号	AK7
骨髓瘤	NS1
同种型	IgG1

应用

The Abpromise guarantee **Abpromise™** 承诺保证使用 ab30486 于以下的经测试应用

“应用说明”部分 下显示的仅为推荐的起始稀释度;实际最佳的稀释度/浓度应由使用者检定。

应用	Ab 评论	说明
Flow Cyt		

应用说明 Flow Cyt: 1/Neat - 1/5. Use 10µl of the working dilution for 10⁶ cells or 100ul whole blood.

Not yet tested in other applications.

Optimal dilutions/concentrations should be determined by the end user.

靶标

功能 Integrin alpha-2/beta-1 is a receptor for laminin, collagen, collagen C-propeptides, fibronectin and E-cadherin. It recognizes the proline-hydroxylated sequence G-F-P-G-E-R in collagen. It is responsible for adhesion of platelets and other cells to collagens, modulation of collagen and collagenase gene expression, force generation and organization of newly synthesized extracellular matrix.

序列相似性 Belongs to the integrin alpha chain family.

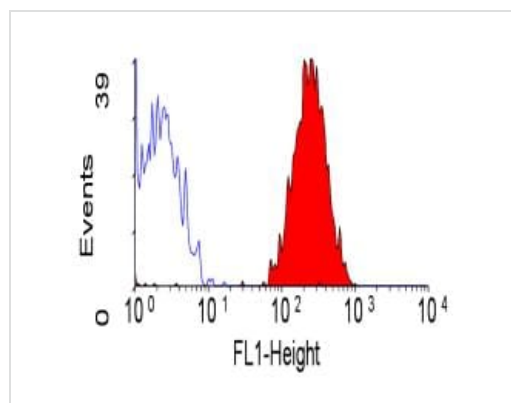
Contains 7 FG-GAP repeats.

Contains 1 VWFA domain.

结构域 The integrin I-domain (insert) is a VWFA domain. Integrins with I-domains do not undergo protease cleavage.

细胞定位 Membrane.

图片



Flow cytometric analysis of human peripheral blood platelets with 10µl for 10⁶ cells of anti human CD49b FITC conjugated (ab30486).

Flow Cytometry - FITC Anti-Integrin alpha 2 antibody
[AK7] (ab30486)

Please note: All products are "FOR RESEARCH USE ONLY. NOT FOR USE IN DIAGNOSTIC PROCEDURES"

Our Abpromise to you: Quality guaranteed and expert technical support

- Replacement or refund for products not performing as stated on the datasheet
- Valid for 12 months from date of delivery
- Response to your inquiry within 24 hours
- We provide support in Chinese, English, French, German, Japanese and Spanish
- Extensive multi-media technical resources to help you
- We investigate all quality concerns to ensure our products perform to the highest standards

If the product does not perform as described on this datasheet, we will offer a refund or replacement. For full details of the Abpromise, please visit <https://www.abcam.cn/abpromise> or contact our technical team.

Terms and conditions

- Guarantee only valid for products bought direct from Abcam or one of our authorized distributors