

FITC Anti-Integrin alpha 1 antibody [TS2/7] ab34176

2 References **1 图像**

概述

产品名称	FITC荧光Anti-Integrin alpha 1抗体[TS2/7]
描述	FITC荧光小鼠单克隆抗体[TS2/7] to Integrin alpha 1
宿主	Mouse
偶联物	FITC. Ex: 493nm, Em: 528nm
特异性	This antibody recognises the human alpha 1 integrin subunit.
经测试应用	适用于: Flow Cyt
种属反应性	与反应: Human
免疫原	Tissue, cells or virus corresponding to Human Integrin alpha 1. Immunogen sourced Human HLA-DR CTL line
常规说明	<p>The Life Science industry has been in the grips of a reproducibility crisis for a number of years. Abcam is leading the way in addressing this with our range of recombinant monoclonal antibodies and knockout edited cell lines for gold-standard validation. Please check that this product meets your needs before purchasing.</p> <p>If you have any questions, special requirements or concerns, please send us an inquiry and/or contact our Support team ahead of purchase. Recommended alternatives for this product can be found below, along with publications, customer reviews and Q&As</p>

性能

形式	Liquid
存放说明	Shipped at 4°C. Store at +4°C.
存储溶液	<p>pH: 7.40</p> <p>Preservative: 0.09% Sodium azide</p> <p>Constituents: PBS, 1% BSA</p>
纯度	Protein G purified
纯化说明	Purified IgG prepared by affinity chromatography on Protein G from tissue culture supernatant
克隆	单克隆
克隆编号	TS2/7
骨髓瘤	NS1
同种型	IgG1

应用

The Abpromise guarantee **Abpromise™**承诺保证使用ab34176于以下的经测试应用

“应用说明”部分 下显示的仅为推荐的起始稀释度;实际最佳的稀释度/浓度应由使用者检定。

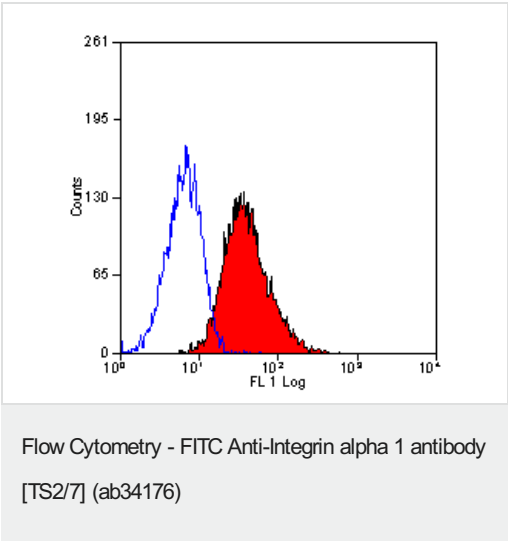
应用	Ab评论	说明
Flow Cyt		

应用说明	Flow Cyt: neat - 1/5. Use 10µl of the suggested working dilution to label 10 ⁶ cells in 100µl. Not yet tested in other applications. Optimal dilutions/concentrations should be determined by the end user.
------	--

靶标

功能	Integrin alpha-1/beta-1 is a receptor for laminin and collagen. It recognizes the proline-hydroxylated sequence G-F-P-G-E-R in collagen.
序列相似性	Belongs to the integrin alpha chain family. Contains 7 FG-GAP repeats. Contains 1 VWFA domain.
结构域	The integrin I-domain (insert) is a VWFA domain. Integrins with I-domains do not undergo protease cleavage.
细胞定位	Membrane.

图片



Flow Cytometry analysis of HeLa cells labeling Integrin alpha 1 with ab34176.

Please note: All products are "FOR RESEARCH USE ONLY. NOT FOR USE IN DIAGNOSTIC PROCEDURES"

Our Abpromise to you: Quality guaranteed and expert technical support

- Replacement or refund for products not performing as stated on the datasheet
- Valid for 12 months from date of delivery
- Response to your inquiry within 24 hours
- We provide support in Chinese, English, French, German, Japanese and Spanish
- Extensive multi-media technical resources to help you
- We investigate all quality concerns to ensure our products perform to the highest standards

If the product does not perform as described on this datasheet, we will offer a refund or replacement. For full details of the Abpromise, please visit <https://www.abcam.cn/abpromise> or contact our technical team.

Terms and conditions

- Guarantee only valid for products bought direct from Abcam or one of our authorized distributors