

FITC Anti-ILT-4 antibody [27D6] ab95819

1 图像

概述

产品名称	FITC荧光Anti-ILT-4抗体[27D6]
描述	FITC荧光大鼠单克隆抗体[27D6] to ILT-4
宿主	Rat
偶联物	FITC. Ex: 493nm, Em: 528nm
经测试应用	适用于: Flow Cyt
种属反应性	与反应: Human
免疫原	The details of the immunogen for this antibody are not available.
阳性对照	Normal Human peripheral blood cells
常规说明	<p>The Life Science industry has been in the grips of a reproducibility crisis for a number of years. Abcam is leading the way in addressing this with our range of recombinant monoclonal antibodies and knockout edited cell lines for gold-standard validation. Please check that this product meets your needs before purchasing.</p> <p>If you have any questions, special requirements or concerns, please send us an inquiry and/or contact our Support team ahead of purchase. Recommended alternatives for this product can be found below, along with publications, customer reviews and Q&As</p>

性能

形式	Liquid
存放说明	Shipped at 4°C. Store at +4°C.
存储溶液	<p>pH: 7.20</p> <p>Preservative: 0.09% Sodium azide</p> <p>Constituents: BSA, Gelatin, PBS</p>
纯度	Protein G purified
克隆	单克隆
克隆编号	27D6
同种型	IgM

应用

The Abpromise guarantee

Abpromise™ 承诺保证使用ab95819于以下的经测试应用

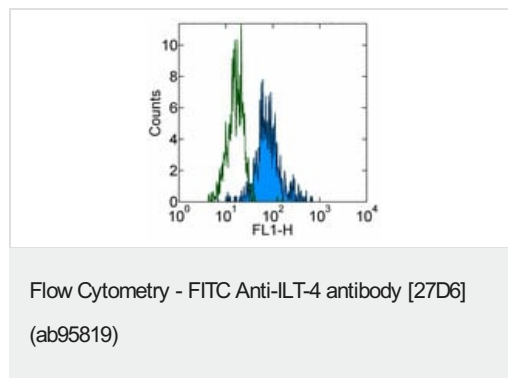
“应用说明”部分 下显示的仅为推荐的起始稀释度;实际最佳的稀释度/浓度应由使用者检定。

应用	Ab评论	说明
Flow Cyt		Use 5µl for 10 ⁶ cells. ab35774 - Rat monoclonal IgM, is suitable for use as an isotype control with this antibody.

靶标

功能	Receptor for class I MHC antigens. Recognizes a broad spectrum of HLA-A, HLA-B, HLA-C and HLA-G alleles. Involved in the down-regulation of the immune response and the development of tolerance. Competes with CD8A for binding to class I MHC antigens. Inhibits FCGR1A-mediated phosphorylation of cellular proteins and mobilization of intracellular calcium ions.
组织特异性	Expressed on monocytes and B-cells, and at lower levels on dendritic cells. Detected at low levels in natural killer (NK) cells.
序列相似性	Contains 4 Ig-like C2-type (immunoglobulin-like) domains.
结构域	Contains 3 copies of a cytoplasmic motif that is referred to as the immunoreceptor tyrosine-based inhibitor motif (ITIM). This motif is involved in modulation of cellular responses. The phosphorylated ITIM motif can bind the SH2 domain of several SH2-containing phosphatases.
翻译后修饰	Phosphorylated on tyrosine residues. Dephosphorylated by PTPN6.
细胞定位	Membrane.

图片



Staining of normal Human peripheral blood cells with Rat IgM ?
Isotype Control FITC (open histogram) or ab95819 (filled histogram). Cells in the monocyte gate were used for analysis.

Please note: All products are "FOR RESEARCH USE ONLY. NOT FOR USE IN DIAGNOSTIC PROCEDURES"

Our Abpromise to you: Quality guaranteed and expert technical support

- Replacement or refund for products not performing as stated on the datasheet
- Valid for 12 months from date of delivery
- Response to your inquiry within 24 hours

- We provide support in Chinese, English, French, German, Japanese and Spanish
- Extensive multi-media technical resources to help you
- We investigate all quality concerns to ensure our products perform to the highest standards

If the product does not perform as described on this datasheet, we will offer a refund or replacement. For full details of the Abpromise, please visit <https://www.abcam.cn/abpromise> or contact our technical team.

Terms and conditions

- Guarantee only valid for products bought direct from Abcam or one of our authorized distributors