

FITC Anti-ICAM1 antibody [1A29] ab23835

★★★★★ [1 Abreviews](#) [5 References](#) [1 图像](#)

概述

产品名称	FITC荧光Anti-ICAM1抗体[1A29]
描述	FITC荧光小鼠单克隆抗体[1A29] to ICAM1
宿主	Mouse
偶联物	FITC. Ex: 493nm, Em: 528nm
经测试应用	适用于: Flow Cyt
种属反应性	与反应: Rat
免疫原	Tissue, cells or virus corresponding to Rat ICAM1. Rat Ax cell line (HEV derived cells).
常规说明	<p>The Life Science industry has been in the grips of a reproducibility crisis for a number of years. Abcam is leading the way in addressing this with our range of recombinant monoclonal antibodies and knockout edited cell lines for gold-standard validation. Please check that this product meets your needs before purchasing.</p> <p>If you have any questions, special requirements or concerns, please send us an inquiry and/or contact our Support team ahead of purchase. Recommended alternatives for this product can be found below, along with publications, customer reviews and Q&As</p>

性能

形式	Liquid
存放说明	Shipped at 4°C. Store at +4°C.
存储溶液	pH: 7.20 Preservative: 0.09% Sodium azide Constituent: PBS
纯度	Protein A purified
克隆	单克隆
克隆编号	1A29
同种型	IgG1

应用

“应用说明”部分 下显示的仅为推荐的起始稀释度;实际最佳的稀释度/浓度应由使用者检定。

应用	Ab评论	说明
Flow Cyt	★★★★★ (1)	

应用说明

Flow Cyt: 1/25 - 1/100. Use 10µl working dilution for 10⁶ cells in 100µl.

Not tested in other applications.

Optimal dilutions/concentrations should be determined by the end user.

靶标

功能

ICAM proteins are ligands for the leukocyte adhesion protein LFA-1 (integrin alpha-L/beta-2). During leukocyte trans-endothelial migration, ICAM1 engagement promotes the assembly of endothelial apical cups through ARHGEF26/SGEF and RHOG activation. In case of rhinovirus infection acts as a cellular receptor for the virus.

序列相似性

Belongs to the immunoglobulin superfamily. ICAM family.
Contains 5 Ig-like C2-type (immunoglobulin-like) domains.

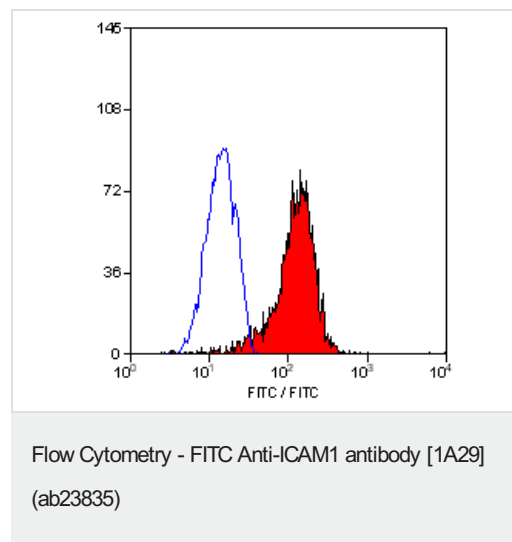
翻译后修饰

Monoubiquitinated, which is promoted by MARCH9 and leads to endocytosis.

细胞定位

Membrane.

图片



ab23875 staining ICAM1 in stimulated rat spleen cells by Flow cytometry.

Please note: All products are "FOR RESEARCH USE ONLY. NOT FOR USE IN DIAGNOSTIC PROCEDURES"

Our Abpromise to you: Quality guaranteed and expert technical support

- Replacement or refund for products not performing as stated on the datasheet
- Valid for 12 months from date of delivery
- Response to your inquiry within 24 hours

- We provide support in Chinese, English, French, German, Japanese and Spanish
- Extensive multi-media technical resources to help you
- We investigate all quality concerns to ensure our products perform to the highest standards

If the product does not perform as described on this datasheet, we will offer a refund or replacement. For full details of the Abpromise, please visit <https://www.abcam.cn/abpromise> or contact our technical team.

Terms and conditions

- Guarantee only valid for products bought direct from Abcam or one of our authorized distributors